



WATER PURIFICATION PLANT EXPANSION

Public Meeting

September 4, 2018

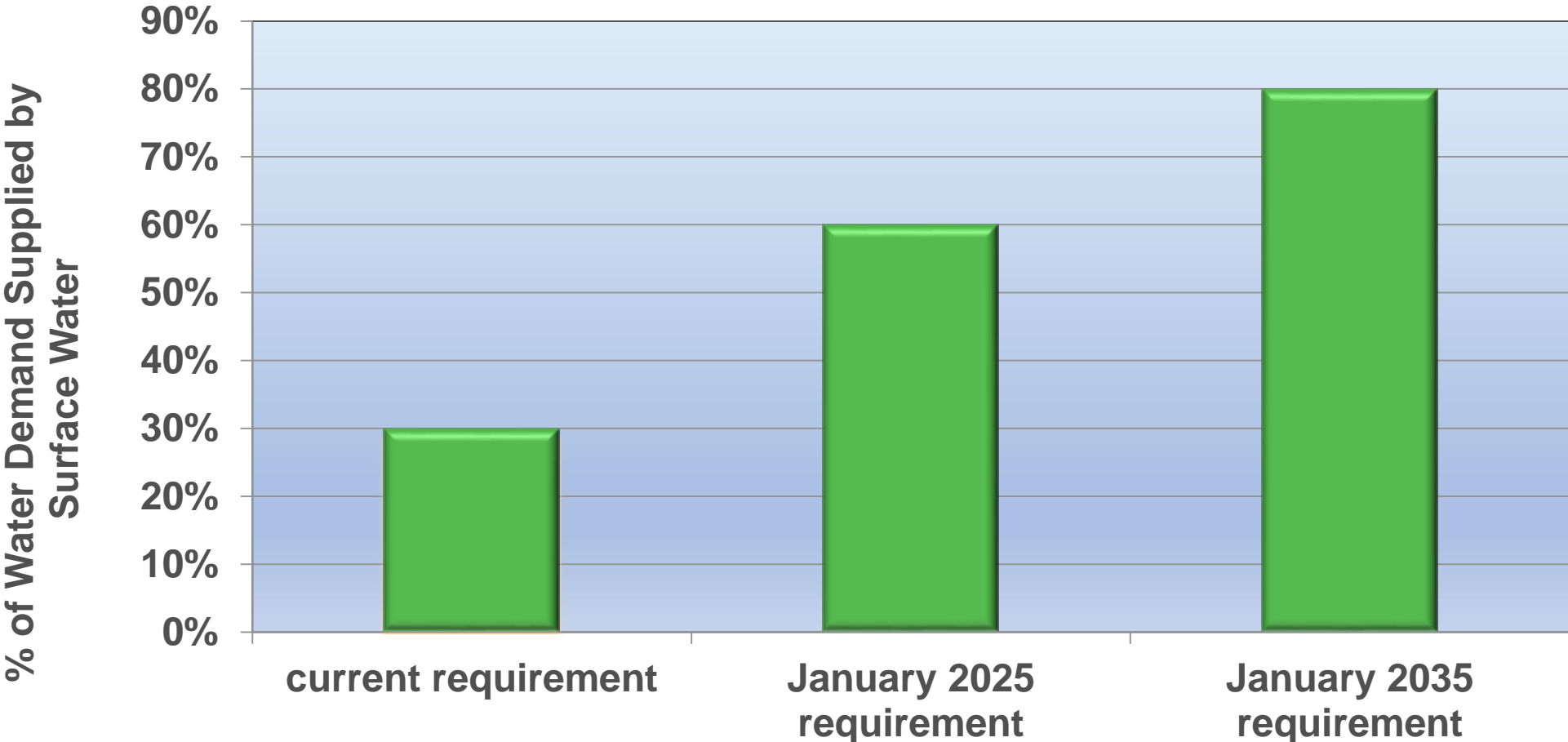


CONTENTS

- 1** Project Background
- 2** Construction Progress
- 3** Next Steps
- 4** What to Expect
- 5** Questions

Project Background

NEWPP Expansion Necessary to Meet Groundwater Subsidence Regulations



320 Million Gallons per Day



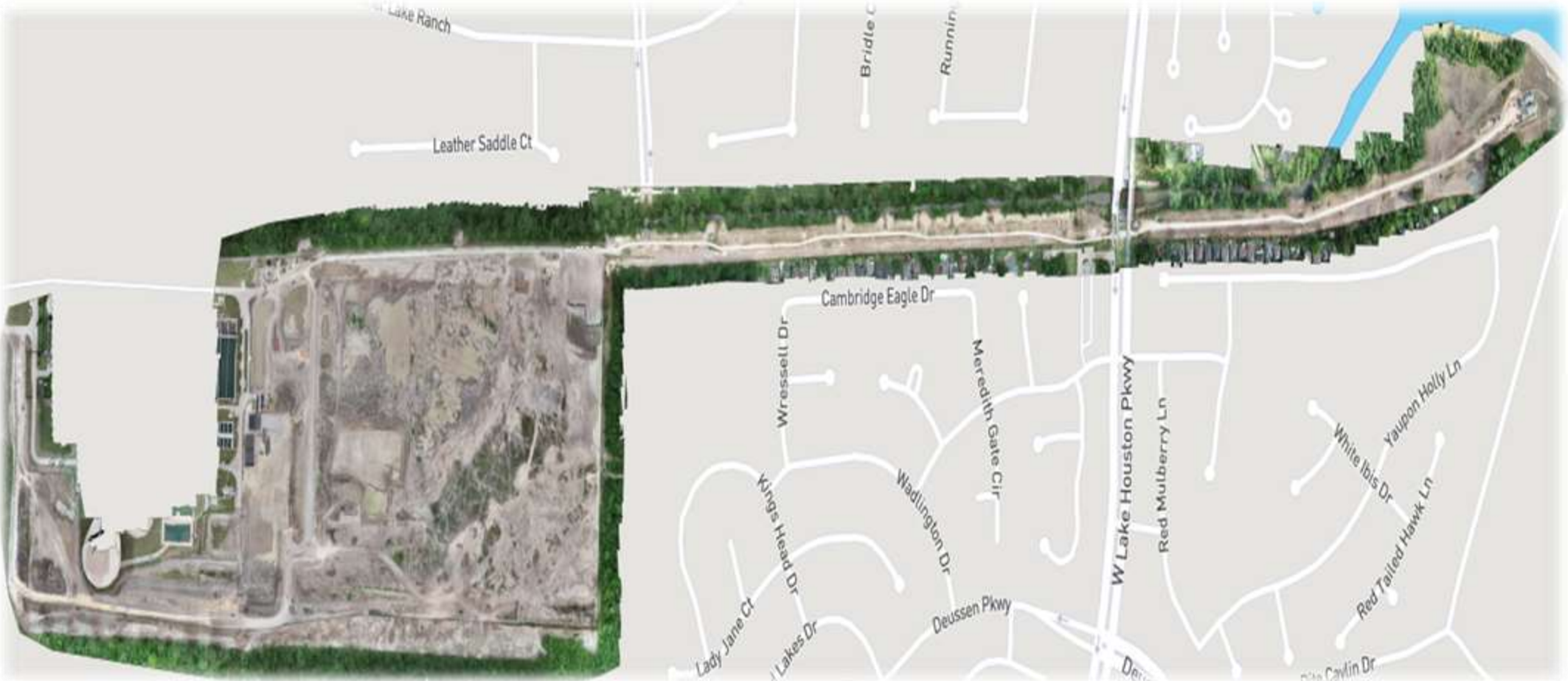
Lake Houston Intake Pump Station



Water Pipeline



Construction Area



Construction Progress



NEWPP site – Aerial view

Concrete pours at the plant



Crane installation for Test Piles



Water Pipeline



Challenges along Raw Water Pipeline Corridor

- High water levels in the pipeline trench from rain and groundwater slowed the construction progress of the pipeline



Dewatering system was installed to keep the water out of the pipe trench



The dewatering motor has been encased to reduce the noise



The area between the safety fence and the neighborhood fences has been treated for weeds and will continue to be maintained

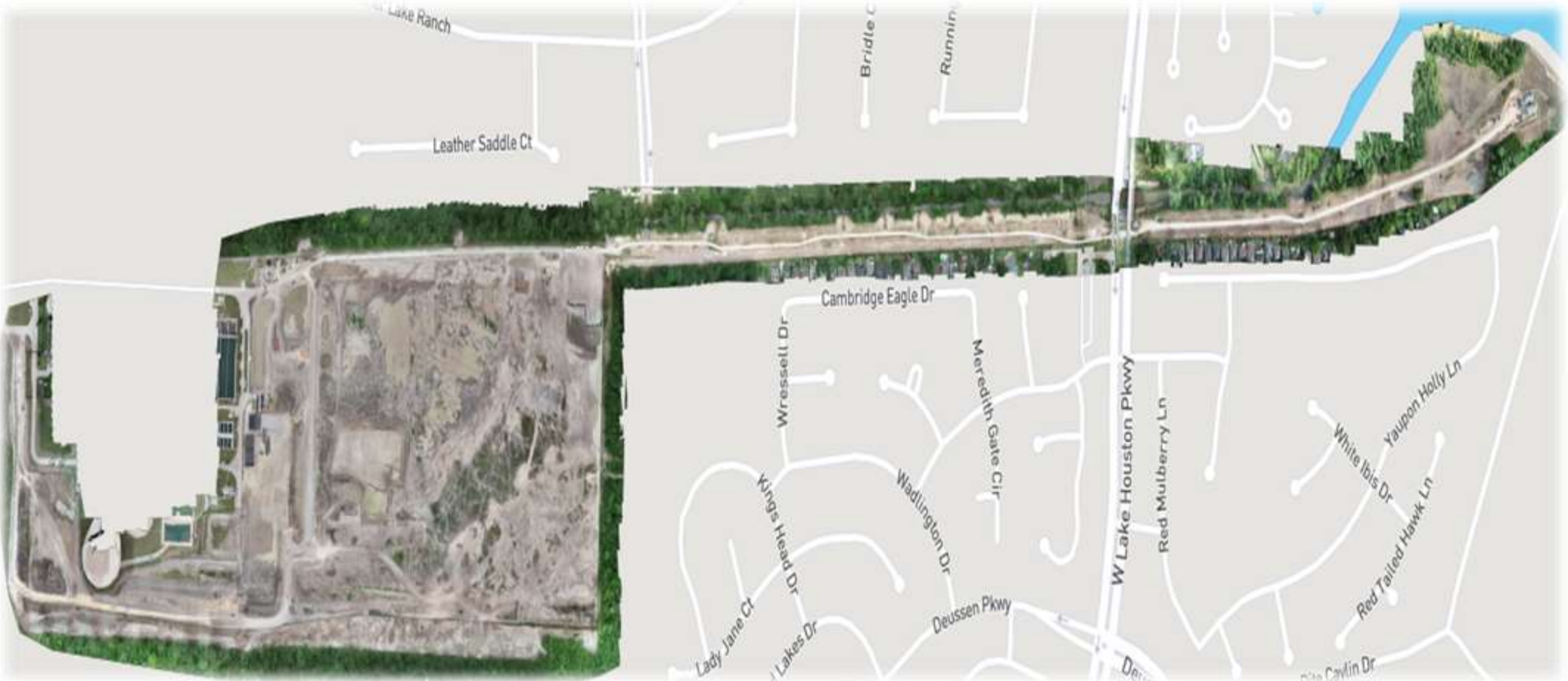


The shaft down to the tunnel beneath W. Lake Houston Parkway



Next Steps

Construction Area



Next Steps

WHAT?	WHEN?
Land Clearing	March – April (COMPLETED)
Dust Control Fence Installed	April – May (COMPLETED)
Overhead Power Lines Removed	May (COMPLETED)
Tunneling West Lake Houston Parkway	May – Early 2019
Pipeline Installed West to East	May – Summer 2019
Influent Pump Station at Lake Houston	November – Summer 2022

What to Expect

Continued earthwork and concrete pours at the site



Pipeline Installation



Median Crossing at West Lake Houston Parkway



Test Piles in Lake Houston



What the Project Team is Doing to Help

Watering construction area

Monitoring noise and vibration activities

Ditches cleared to avoid flooding

Quarterly community meetings

Community updates through door hangers and website

Whom to Contact

GreaterHoustonWater.com

281-520-3777

Public meetings will be held each quarter

Questions?

Whom to Contact

GreaterHoustonWater.com

281-520-3777

Public meetings will be held each quarter