



**CITY OF HOUSTON**  
Houston Public Works

# DESIGN-BUILD SERVICES

# Northeast Water Purification Plant Expansion

**Houston Waterworks Team**





# Construction Progress – EWP 1 Site Development

## May 15, 2019

- **Building subgrade for North Plant structures**
- **Embanking entrance/exit ramps for truck wheel wash.**
- **Connecting chain and setting up wheel wash system for startup.**
- **Backfilling 36in FW line for construction water to North Plant**



# Cutting & embanking truck Wheel Wash ramps Setting up system for Start up.





# Construction Progress – EWP 4 Raw Water Corridor

- **Cutting pipeline excavation, and installing shoring system**
- **Laying 108 RW Pipe in East Corridor**
- **Welding joints**
- **Tunneling demobilization**
- **Installation of South Tunnel Exit Shaft**



# Trench Excavation and Pipe Installation in East Corridor



# Exit Shaft Collar Installation



# Tunnel Demobilization





# Construction Progress – EWP 2 Filter Structure & TPS

## **FILTER STRUCTURE:**

- **Pouring Base Slabs & Filter Walls.**
- **Forming/Reinforcing Slabs & Walls.**
- **Installing Wall Pipes**

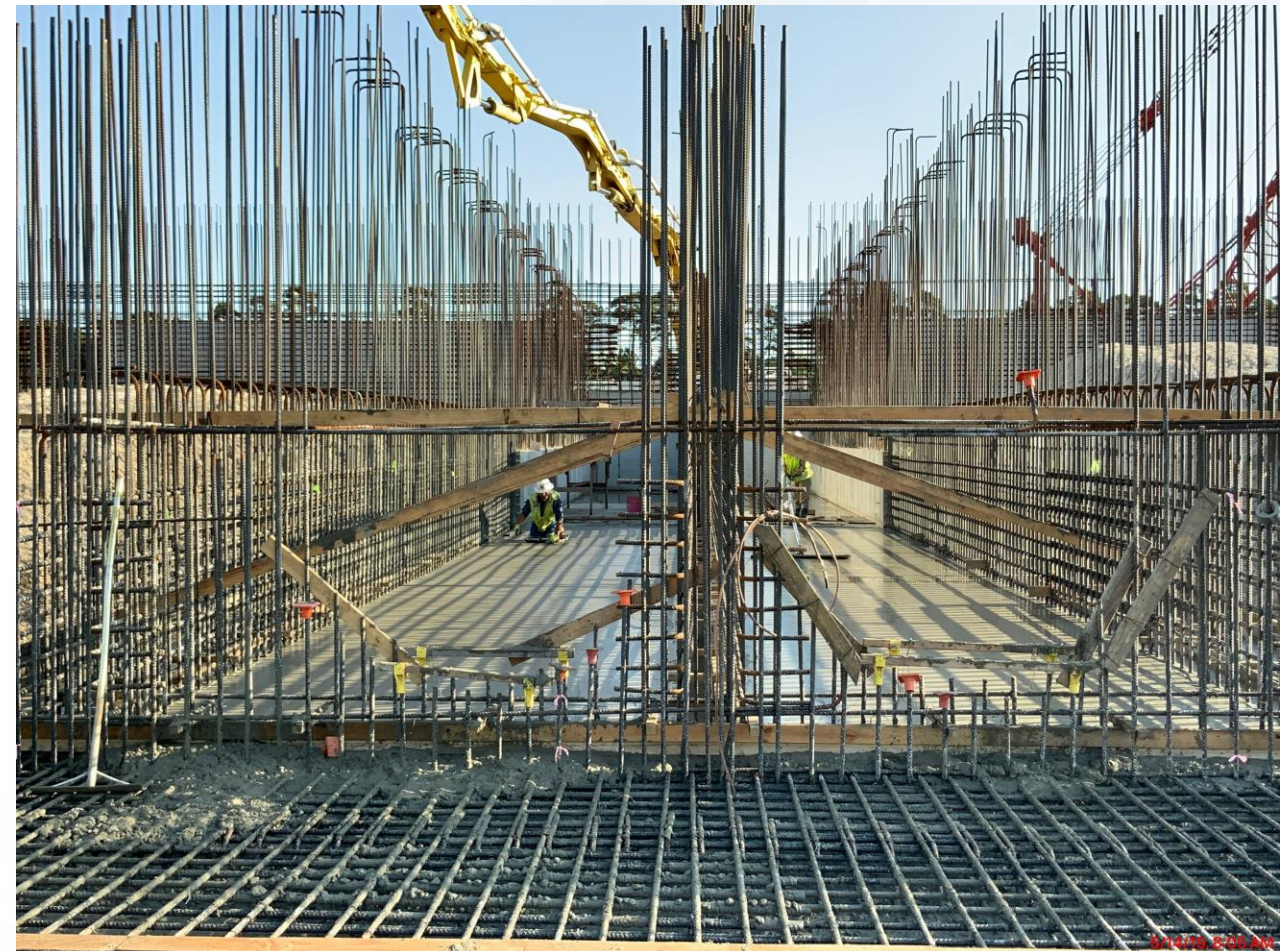
## **TPS:**

- **Wall BW5 Concrete Pour**
- **Tying Rebar and Forming Walls**
- **Strip Forms Wall B2**
- **Install Double-Containment Drain Lines Through Wall A2**

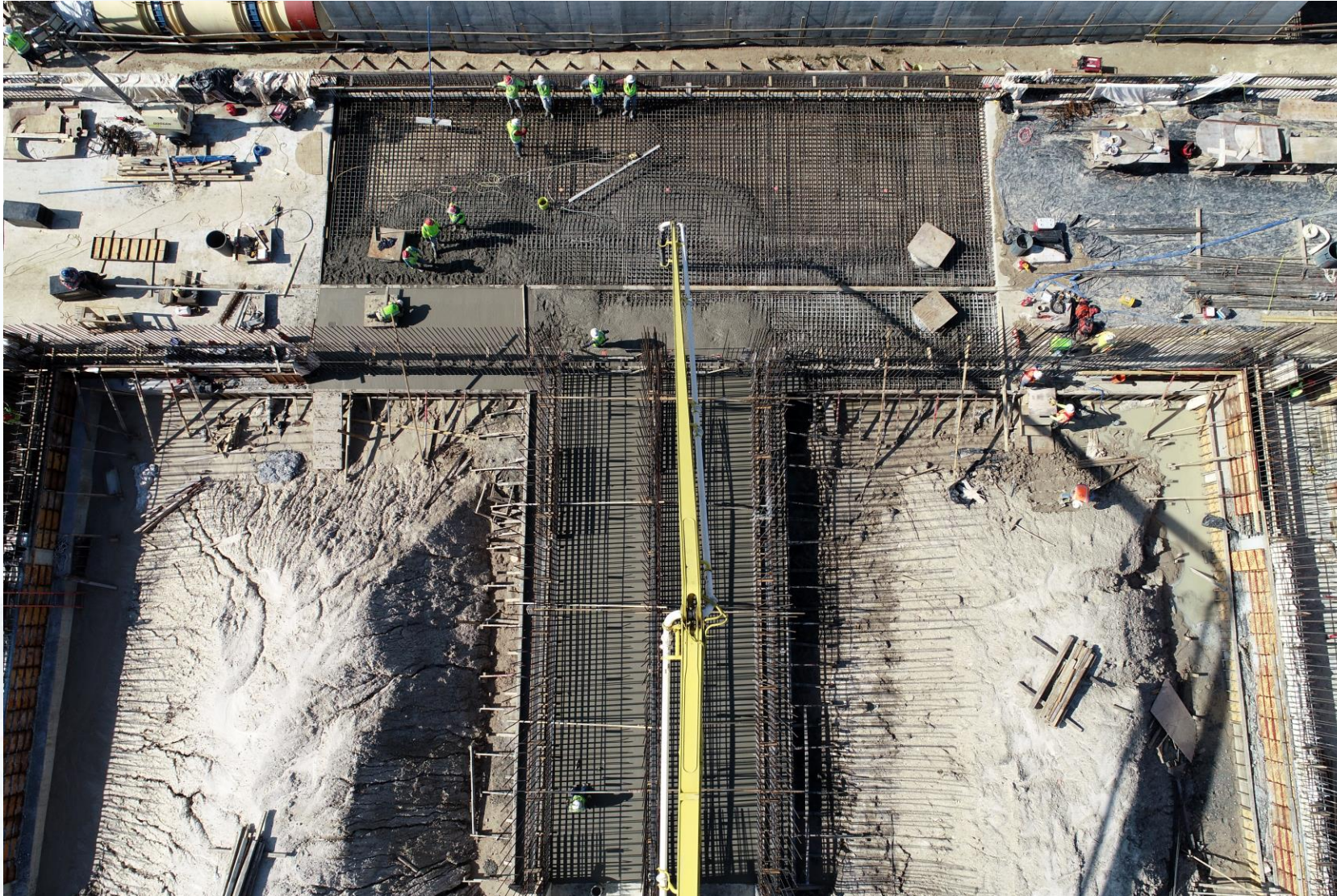




# FILTER STRUCTURE- Pouring Base Slabs & Filter Walls



# FILTER STRUCTURE- Filter Base Slab Pour



# FILTER STRUCTURE- Forming & Reinforcing Walls/Base Slabs



# FILTER STRUCTURE- Installing Wall Pipes



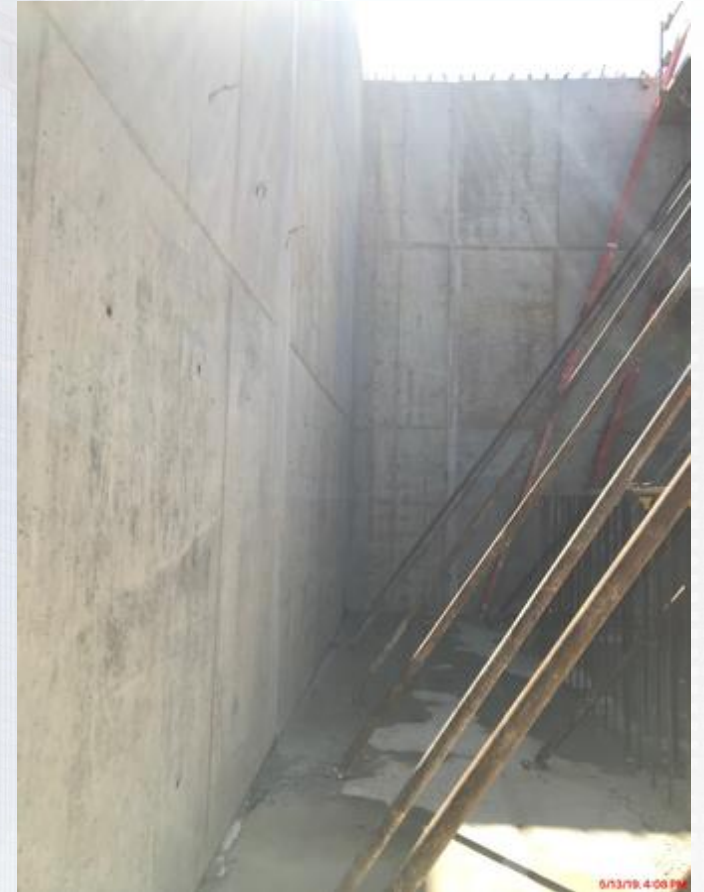
# TPS- Wall BW5 Concrete Pour



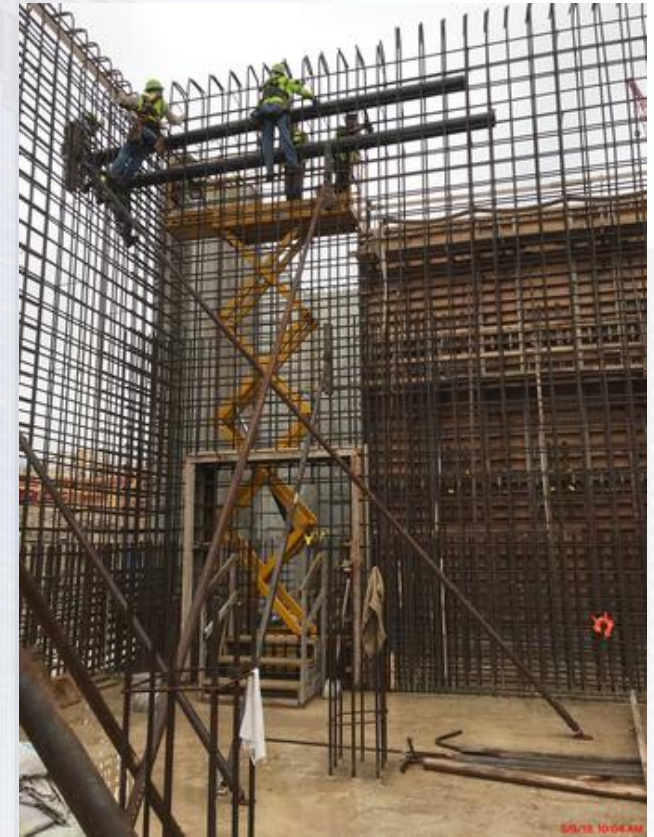
# TPS- Tying Rebar and Forming Walls



# TPS – Wall B2 Strip Forms



# TPS–Double Containment Drain lines Installation Through Wall A2





# Aerial View of Filter and TPS





# Construction Progress – EWP 6 North Plant

- **Mobilizing to site**
- **Excavation for North/South Corridor between Flocc Sec Basins**
- **242 Overflow Sump Excavation and Mud Slab Prep**



# Excavation for 242/241 Sump



# 242 Overflow Sump Excavation

