



CITY OF HOUSTON
Houston Public Works

DESIGN-BUILD SERVICES

Northeast Water Purification Plant Expansion

Houston Waterworks Team





Construction Progress – EWP 1 & 3 Site Development

July 24, 2019

- **Filmed internal of pipe and line stop (existing pipe damaged)**
- **Exposed section of existing 36in FWM to install new line stop**
- **Installing fabric and recycled crushed concrete for additional craft parking lot**
- **Exposing 4in water line in craft parking lot to relocate**
- **Temporary Power**



Exposed section of 36in FWM to install new line-stop



Exposing Existing 4in Waterline to relocate



Installing fabric and crushed concrete for additional craft parking lot



2019 07 23

2019 07 23

TEMP POWER



Trailer City 2 Additions



T362 Temp Power Bore



N. Plant Temp Power



Construction Progress – EWP 4 Raw Water Corridor

- **CLSM placement in West and East Corridors**
- **Laying 108 RW Pipe in East Corridor**
- **Shoring Removal and Grouting**
- **Welding joints**
- **Installation of South Tunnel Carrier Pipe Track System**



Shoring and Pipe Installation



Sta 100+50 Box Culvert Support Preparation



Install Carrier Pipe Track System



Install Carrier Pipe Track System



7/23/19, 9:32 AM

Houston Waterworks Team





Construction Progress – EWP 2 Filter Structure & TPS

FILTER STRUCTURE:

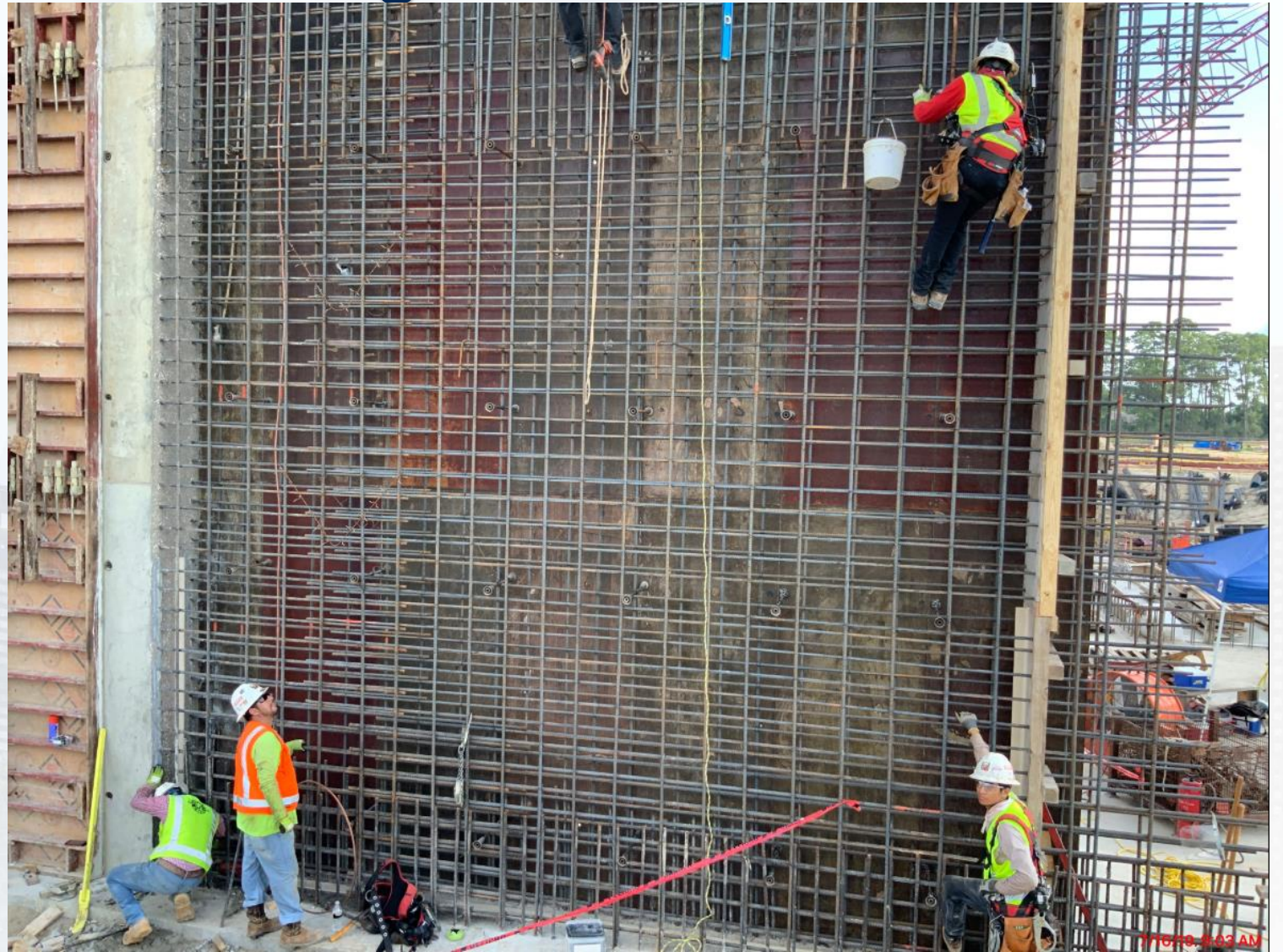
- Reinforcing/Pouring D8B and C36
- Install and Weld 72" BBW Pipe line.
- Reinforcing/Pouring D2A

TPS:

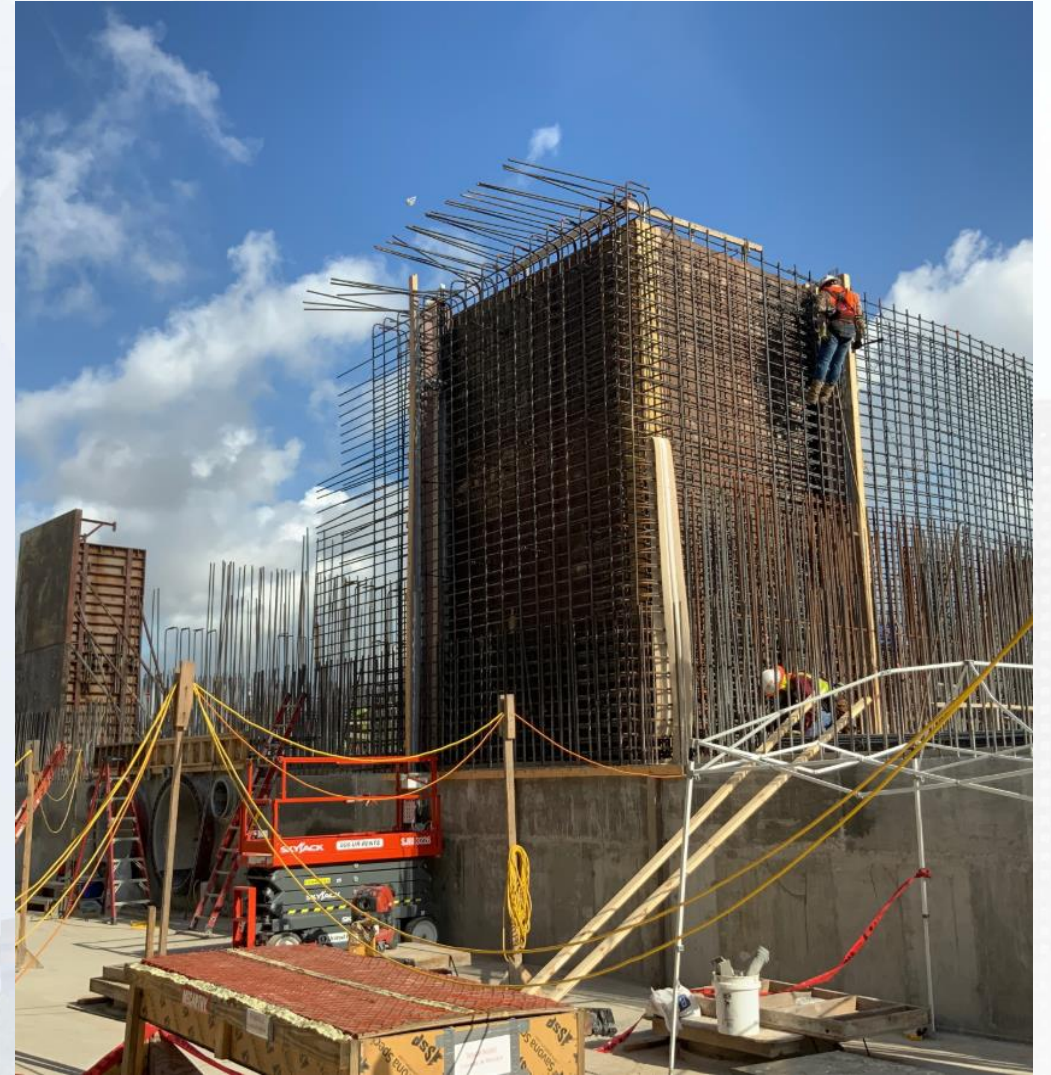
- Poured concrete at Wall A4
- Reinforcement and Form up Wall A6
- Strip Forms at Wall C6
- Install West Exterior 84" BFVs and Form-Up Block-out



FILTER STRUCTURE- Installing Rebar Exterior Wall D8B



FILTER STRUCTURE- Waterstop and Formwork Installation C36

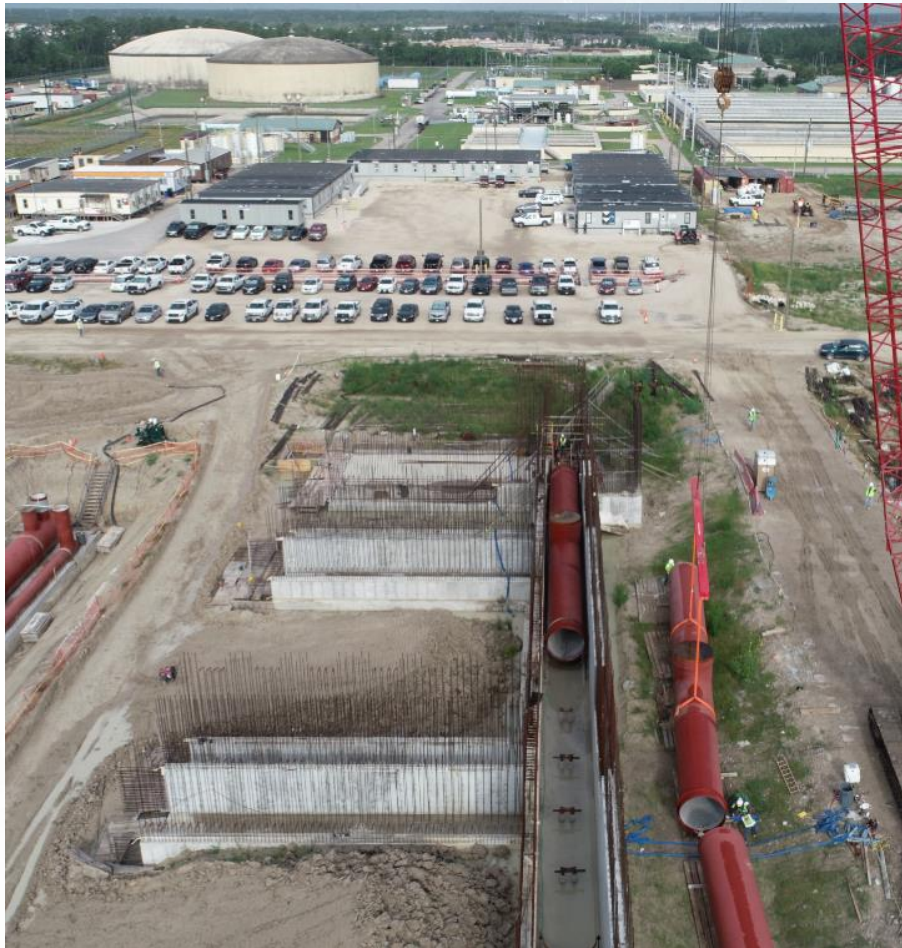


FILTER STRUCTURE- Concrete Pour C36 and D8B

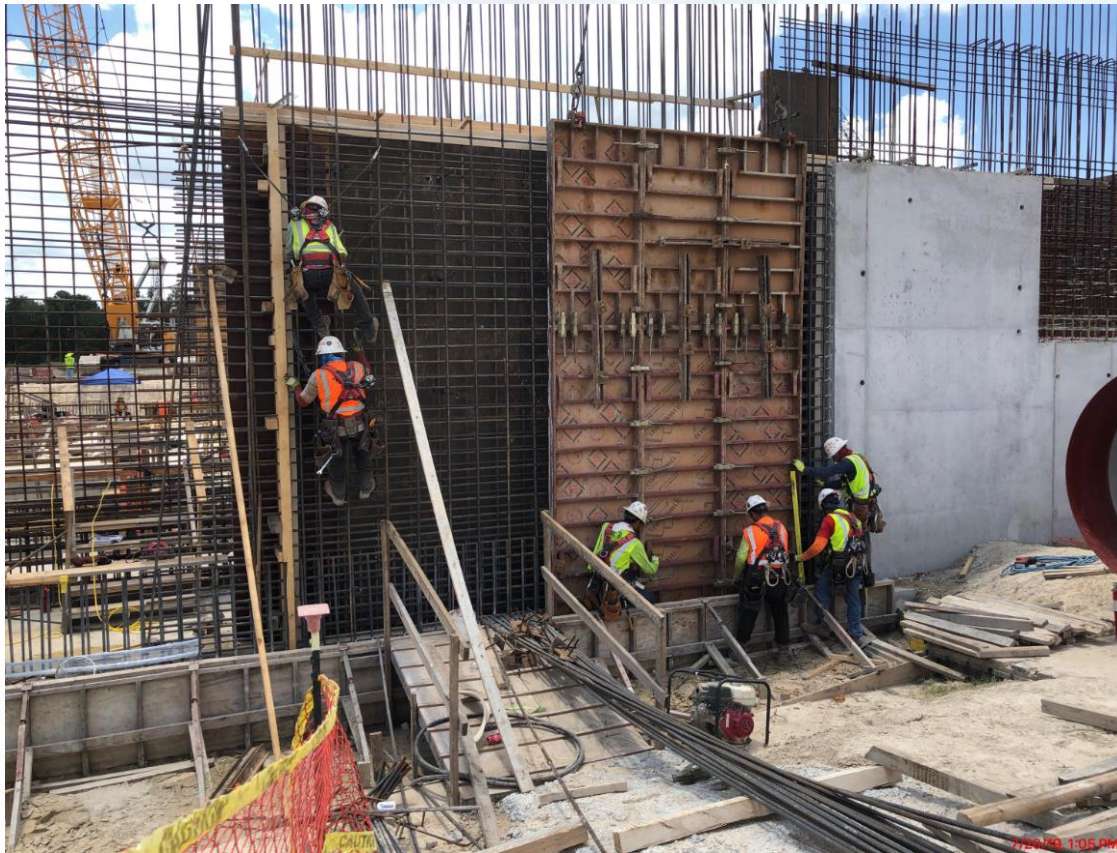


Houston Waterworks Team 

FILTER MODULE Installation of 72 " BWB Pipe



FILTER STRUCTURE- Formwork and Concrete Pour Wall D2A



TPS –Concrete Pour Wall A4



TPS –Reinforcement and Forming of Wall A6



TPS – Strip Forms at Wall C6



TPS – Install West Exterior 84" BFVs and Form-up Block-out



CENTRAL PLANT





Construction Progress – EWP 6 North Plant

- **242 Concrete Foundation and sump rebar reinforcement**
- **Set formwork and install rebar for 241 Sump**
- **Form and Pour 242 Overflow Sump**
- **Excavate 611 Cross Collector**

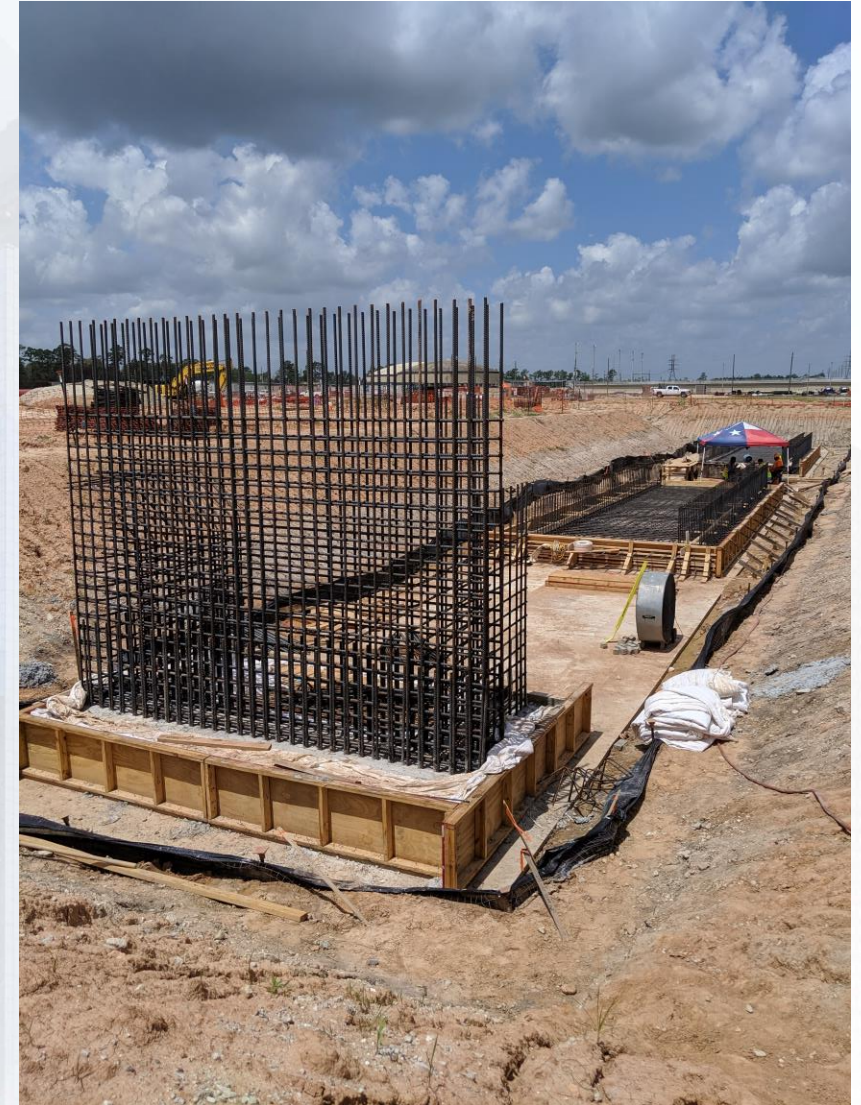
241 Back fill foundation



611 Cross Collector Rebar reinforcement



242 Rebar reinforcement



242 sump and rebar reinforcement



East-West Corridor Ductile Iron Piping Excavation





Construction Progress – EWP 6 IPS

- **Driving Piles**



Pile Driving Activity





Construction Progress – EWP 6 Substation Facility 102

- **Continue of Site Preparation**
- **Site Surveying**

Continue of Site Preparation



Site Surveying

