



CITY OF HOUSTON
Houston Public Works

DESIGN-BUILD SERVICES

Northeast Water Purification Plant Expansion

Houston Waterworks Team



Mass Safety Meeting





Construction Progress – EWP 1 & 3 Site Development

Aug 7, 2019

- **Cut and tied-in new pipe to existing 36in FWM**
- **Cut and tied-in new pipe to existing 30in FWM at first of 2 locations**
- **Installing Temporary Power to Trailer City #2**



Cut, drained, unbolted, and removed existing 36in FWM pipe



Disinfected, laid, wrapped, and tied-in 36in FWM piping & BFV



Poured thrust block and took survey points at 36in FWM tie-in



Excavated, cut, drained, and removed existing 30in FWM pipe



Disinfected, laid, wrapped, and tied-in 30in FWM piping



TEMPORARY POWER



Trailer City 2 Complete 1200 Amps

(New) H13 Power
South Plant, HSPS, T-291, T-312 Feeder



Construction Progress – EWP 4 Raw Water Corridor

- **CLSM placement in West and East Corridors**
- **Laying 108 RW Pipe in East Corridor**
- **Shoring Removal and Grouting**
- **Welding joints**
- **Installation of South Tunnel Carrier Pipe Track System**



108 Pipe Installation

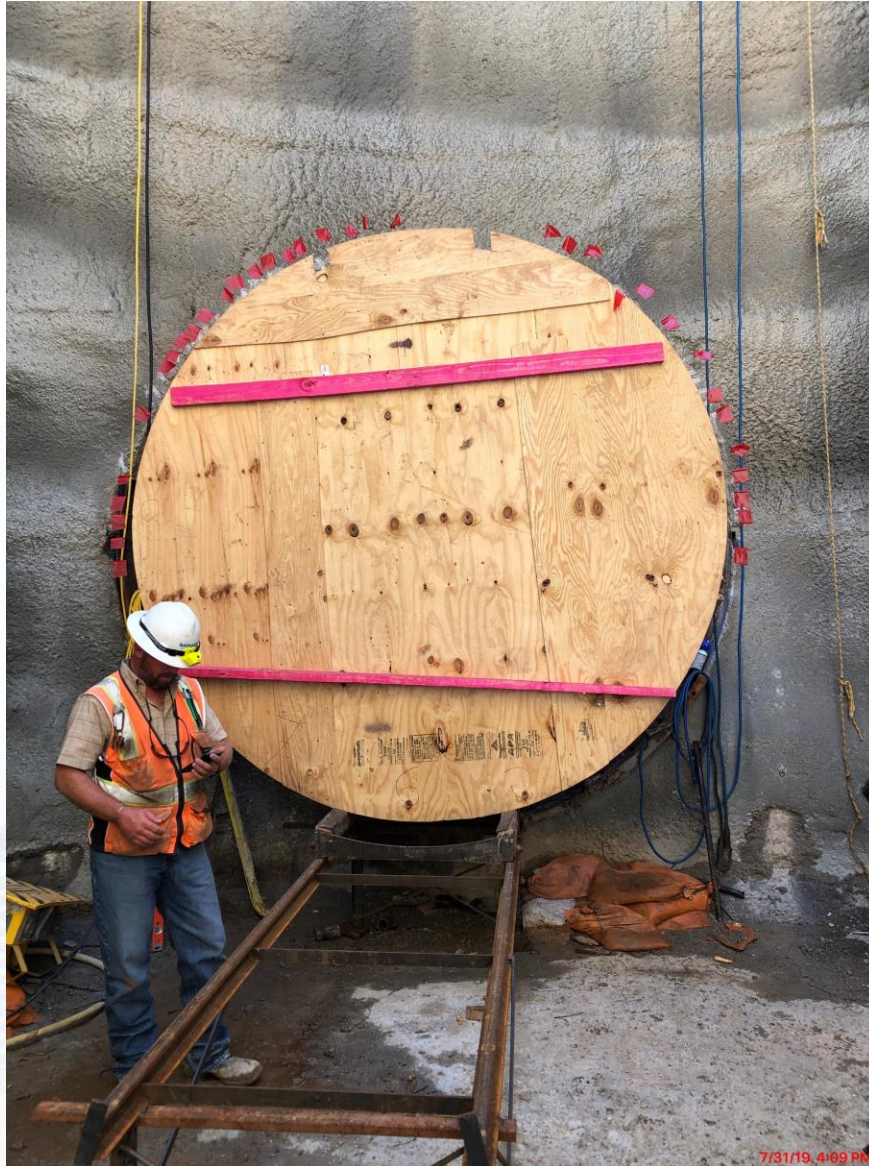


8/6/19, 12:25 PM

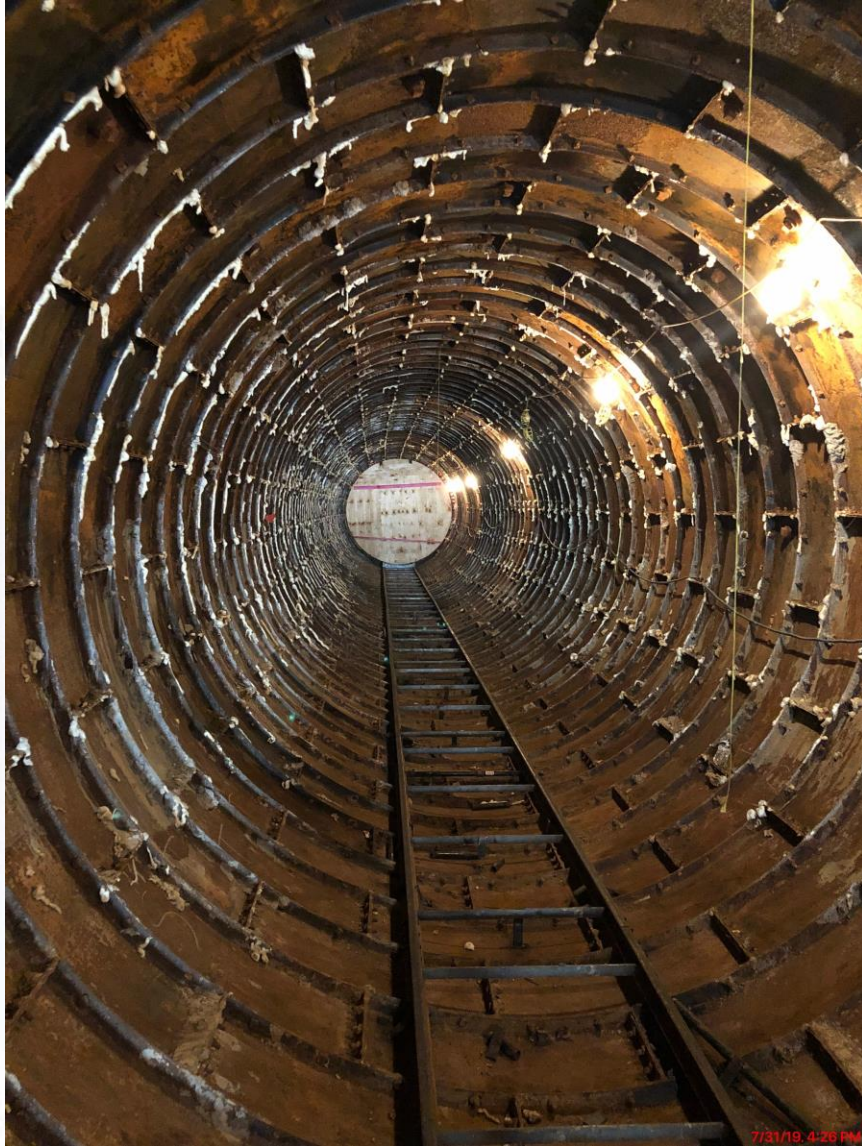
108 Pipe Installation



South Tunnel Pipe Template Check



Tunnel Template Check and Concrete Invert Placement





Construction Progress – EWP 2 Filter Structure & TPS

FILTER STRUCTURE:

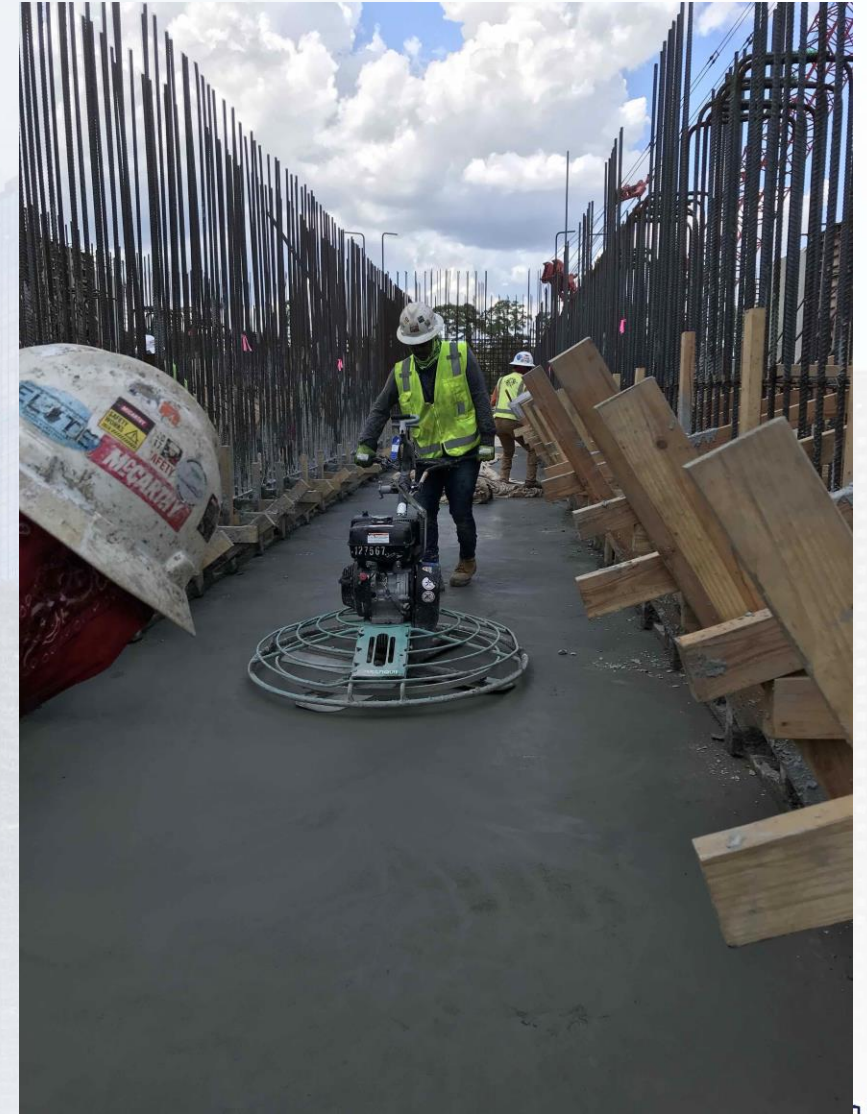
- **Lower Manifold Decks Reinforcing & Pouring**
- **Pouring Interior Filter Walls**
- **Reinforcing/Forming Exterior Wall**

TPS:

- **Hydro-Demolish 60" Suction Pipes' Block-outs for Walls C4 and B4**
- **Wall A6 Strip forms**



FILTER STRUCTURE- Lower Manifold Decks 9/10 Pour



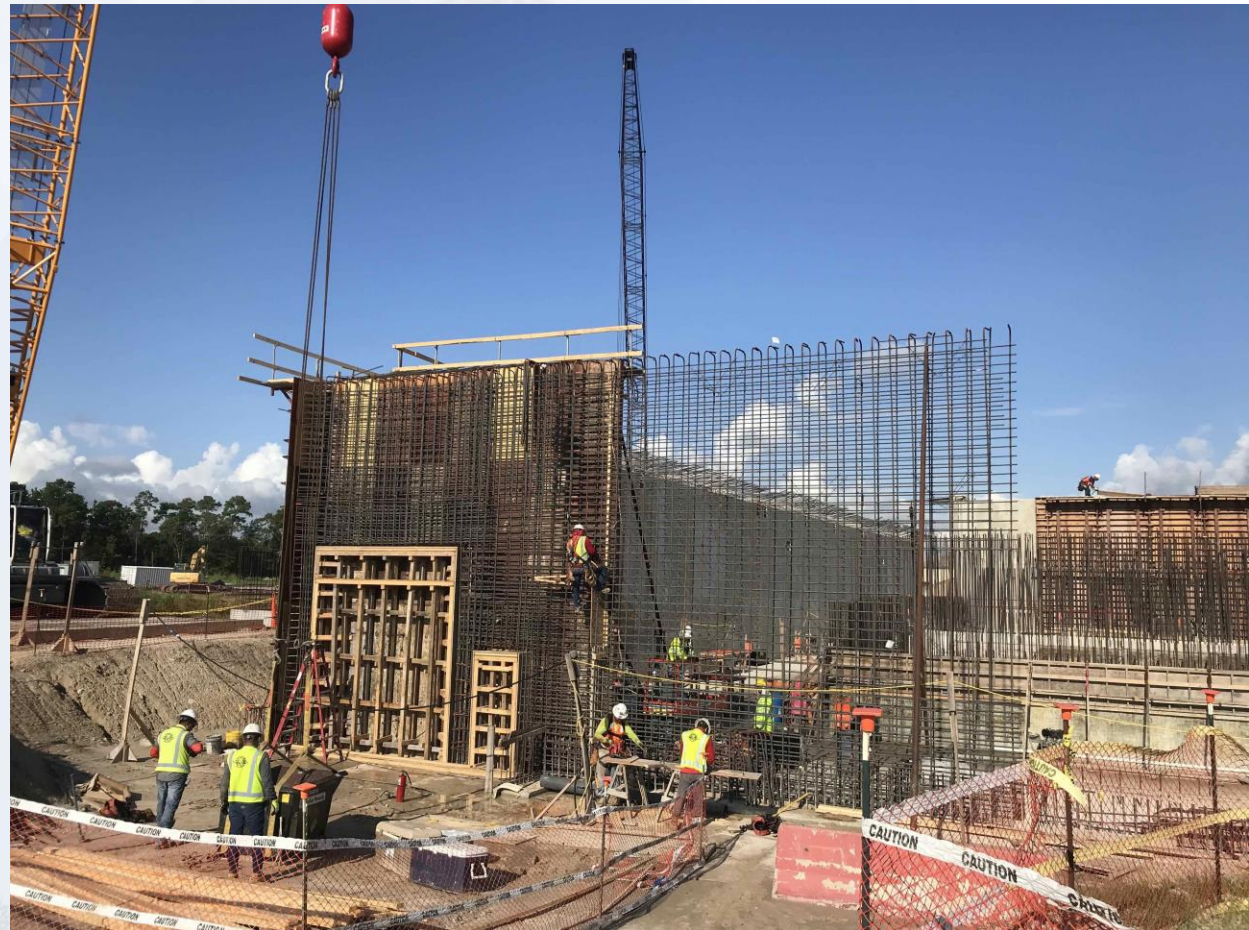
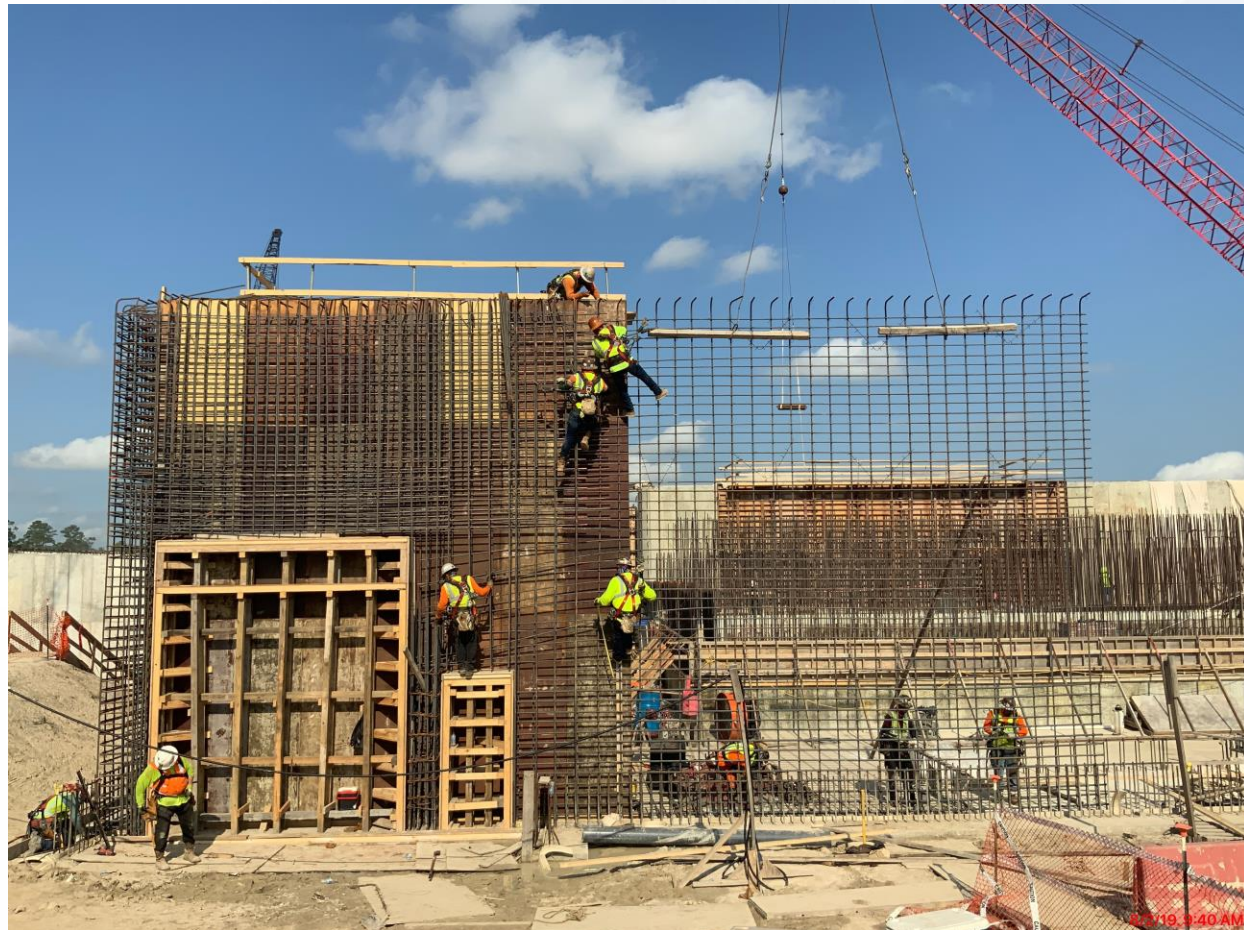
FILTER STRUCTURE- Lower Manifold Decks 8 Rebar



FILTER STRUCTURE- Interior Wall Pour C18,C31,C34



FILTER MODULE- Reinforcing for walls D7/D6



TPS—Hydro Demolish 60" Suction Pipes' Block-outs



TPS –Wall A6 Strip Forms



CENTRAL PLANT





Construction Progress – EWP 6 North Plant

- **242 Concrete Foundation and sump rebar reinforcement**
- **Set formwork and install rebar for 241 Sump**
- **Form and Pour 242 Overflow Sump**
- **Excavate 611 Cross Collector**

241 Back fill and 3" pvc placement



611 Cross Collector Rebar reinforcement



242 Concrete slab and wall pour reinforcement



242 sump Backfill



East-West Corridor Ductile Iron Piping Excavation/Placement



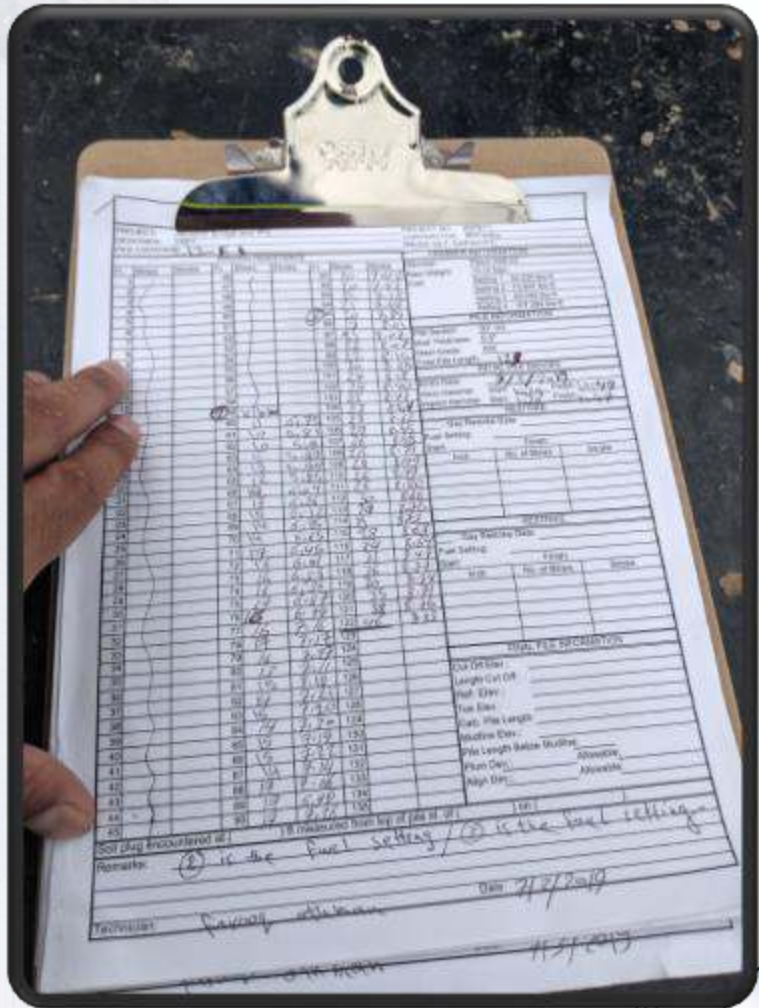
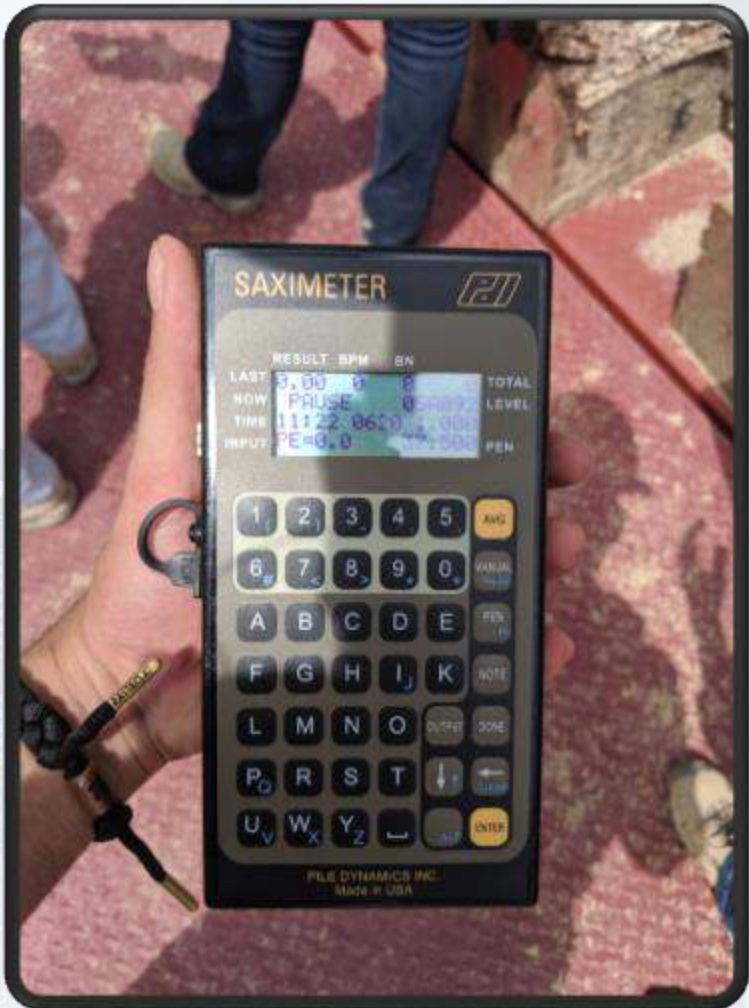
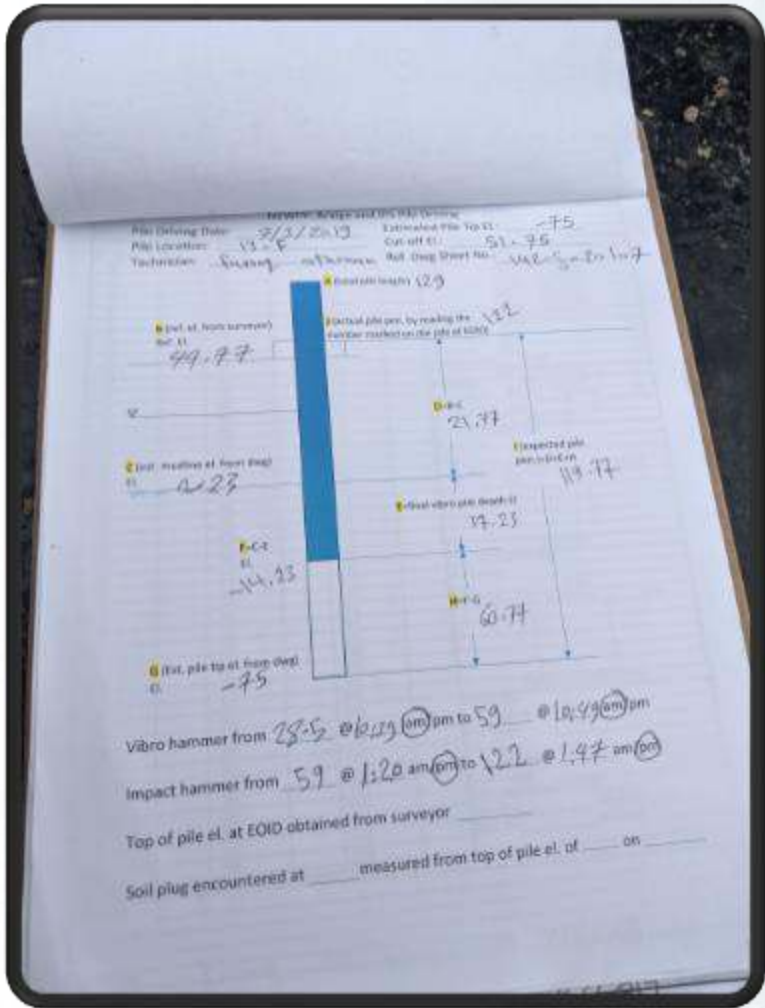


Construction Progress – EWP 6 IPS

- **Driving Piles**



Pile Driving Record Sheet







Construction Progress – EWP 6 Substation Facility 102

- **Continuing Site Preparation**



Continuing Site Preparation

