



CITY OF HOUSTON
Houston Public Works

DESIGN-BUILD SERVICES

Northeast Water Purification Plant Expansion

Houston Waterworks Team





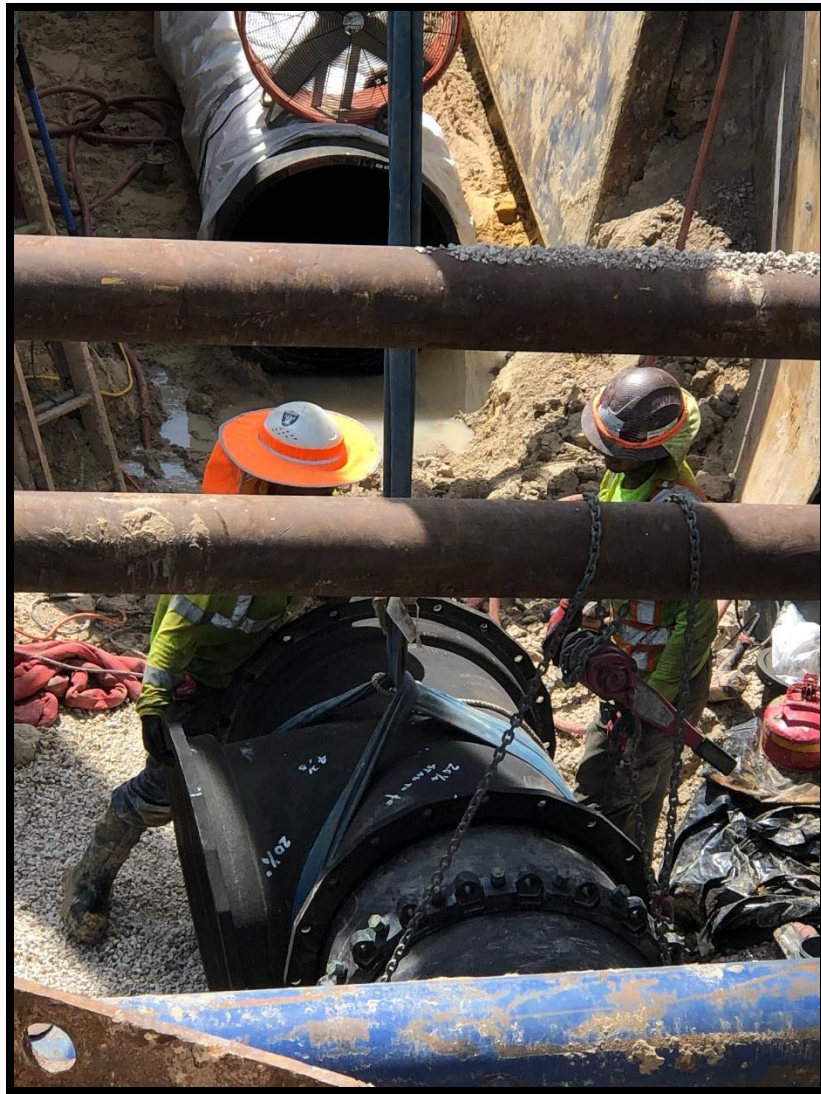
Construction Progress – EWP 1 & 3 Site Development

Aug 14, 2019

- **Cut and tied-in new pipe to existing 30in FWM at second location**
- **Cut and tied-in new 24x16 inch tee and sleeve to 16in FWM**
- **Installing Temporary Power to Trailer City #2**



Completed the 30in FWM tie-in with tee and piping



Cut, drained pipe, and made tie-in to existing 16in FWM



TEMPORARY POWER



(New) H13 Power South Plant, HSPS, T-291,T-312 1,200 Amp Service



Construction Progress – EWP 4 Raw Water Corridor

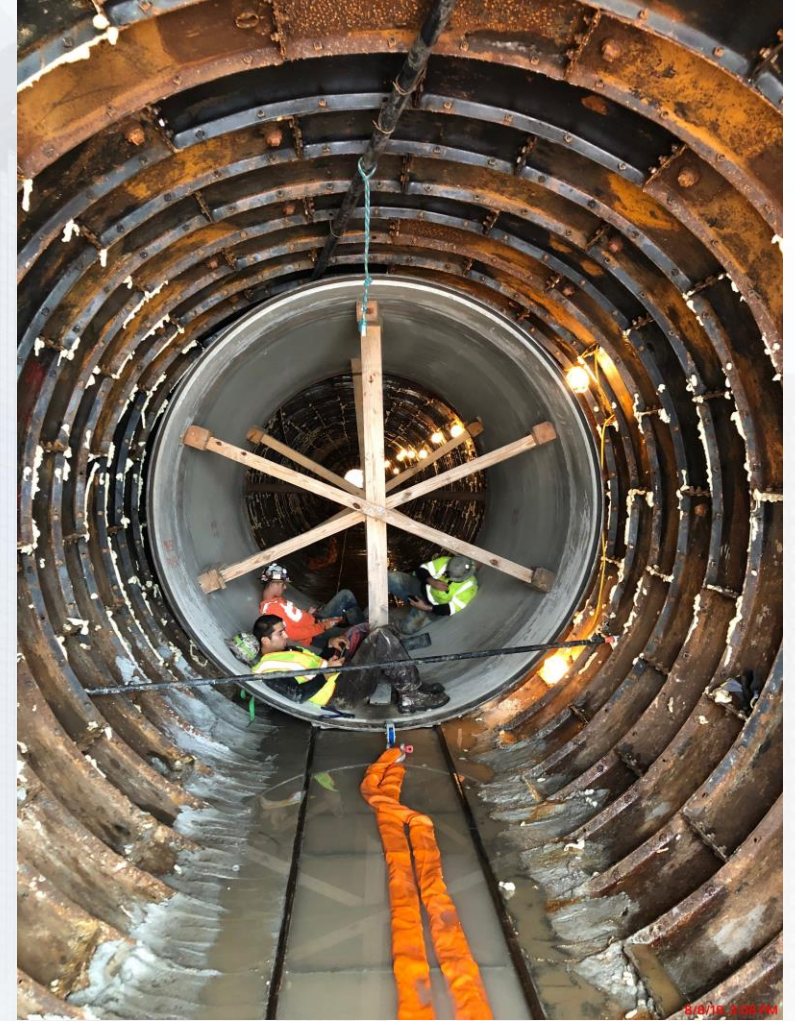
- **Laying 108 RW Pipe in East Corridor**
- **Loading and welding pipe in tunnel**
- **Trench Excavation**
- **Welding joints**
- **Installation of South Tunnel Carrier Pipe Track System**
- **Storm Drainage Installation**



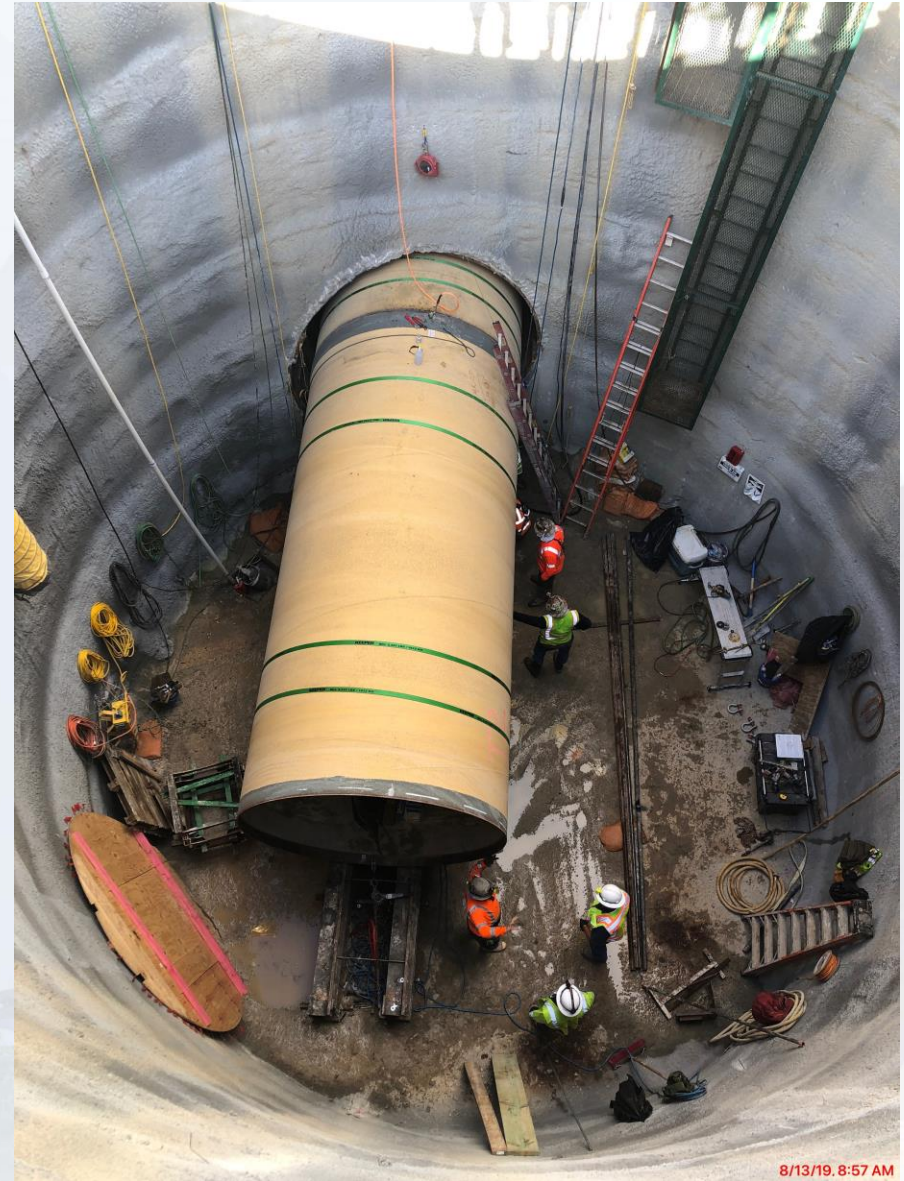
Initial Cut at sta 142+50 and Storm Drainage Installation



Loading Pipe in Tunnel



Loading Pipe in Tunnel





Construction Progress – EWP 2 Filter Structure & TPS

FILTER STRUCTURE:

- **Tying Rebar on Lower Manifold Deck 8/9**
- **Forming/Tying Rebar for Interior & Exterior Filter Walls**
- **Pouring Interior & Exterior Filter Walls**
- **Tying Rebar for Base Slab**
- **Laying 84" CFE Connection to TPS (West Side)**
- **Backfilling Filter 12 Area.**

TPS:

- **Pump Can Area Cleaning**
- **Set Rebar and Form up Columns at Overflow Channel**



FILTER STRUCTURE- Lower Manifold Decks 9/10 Pour



FILTER STRUCTURE- Forming/Tying Rebar for Walls C27,D7,D6 & D3A



FILTER STRUCTURE- Poured Walls C27,C34



FILTER MODULE- Tying Rebar for Base Slab D1B



FILTER MODULE- Connecting 84" CFE to TPS (West Side)



FILTER MODULE- Backfilling Filter 12 Area



TPS – Cleaning Pump Can Area



TPS – Set Rebar and Form up Columns at Overflow Channel





Construction Progress – EWP 6 North Plant

- **242 Cross Collector Walls Rebar/Form/Pour**
- **242 U/G Piping (PDR, RCYS)**
- **241 U/G Piping (PDR)**
- **611 Sump Walls Rebar/Form/Pour**



2" & 3" PDR Installation and Backfill



242 Corridor 24" & 16" PDR Piping and Stem Wall Subgrade Prep



242 Cross Collector Walls



611 Sump Walls Formwork and Rebar



8/13/19, 2:44 PM



Construction Progress – EWP 6 IPS

- **Driving Piles**
- **Setting Up Power to IPS Trailers**



Driving Piles



Temp Power to Trailer City #3







Construction Progress – EWP 6 Substation Facility 102

- **Continuing Site Preparation**
- **Construction Entrance Road 1 - Excavated down to proper grade and prep area for embankment material**



Continuing Site Preparation



Construction Entrance Road 1

Excavated down to proper grade and prep for embankment material

