



CITY OF HOUSTON
Houston Public Works

DESIGN-BUILD SERVICES

Northeast Water Purification Plant Expansion

Houston Waterworks Team





Construction Progress – EWP 1 & 3 Site Development

Aug 21, 2019

- **Completed Finished Water Main (FWM) Tie-ins, stopped by-pass operation, and removed line-stops. New lines are live.**
- **Backfilled and installed ARV Manhole.**
- **Installing Temporary Power to Trailer City #2**



Completed all FWM tie-ins, stopped by-passing, and removed line-stops



Backfilled and graded completed FWM tie-in excavations



Installed ARV manhole and backfilled



TEMPORARY POWER



Wire Pull to South Plant Temp Power



(New) H13 Power South Plant, HSPS, T-291, T-312 1,200
Amp Service





Construction Progress – EWP 4 Raw Water Corridor

- **Laying 108 RW Pipe in East Corridor**
- **Loading and welding pipe in tunnel**
- **Trench Excavation**
- **Welding joints**
- **Storm Drainage Installation**
- **Box culvert support system installation**



Braced existing box culverts and excavating around them



Clearing sta 142+50



Sta 142+50 sub cut and CLSM placement



Welding and Wrapping Joints for Tunnel Carrier Pipe





Construction Progress – EWP 2 Filter Structure & TPS

FILTER STRUCTURE:

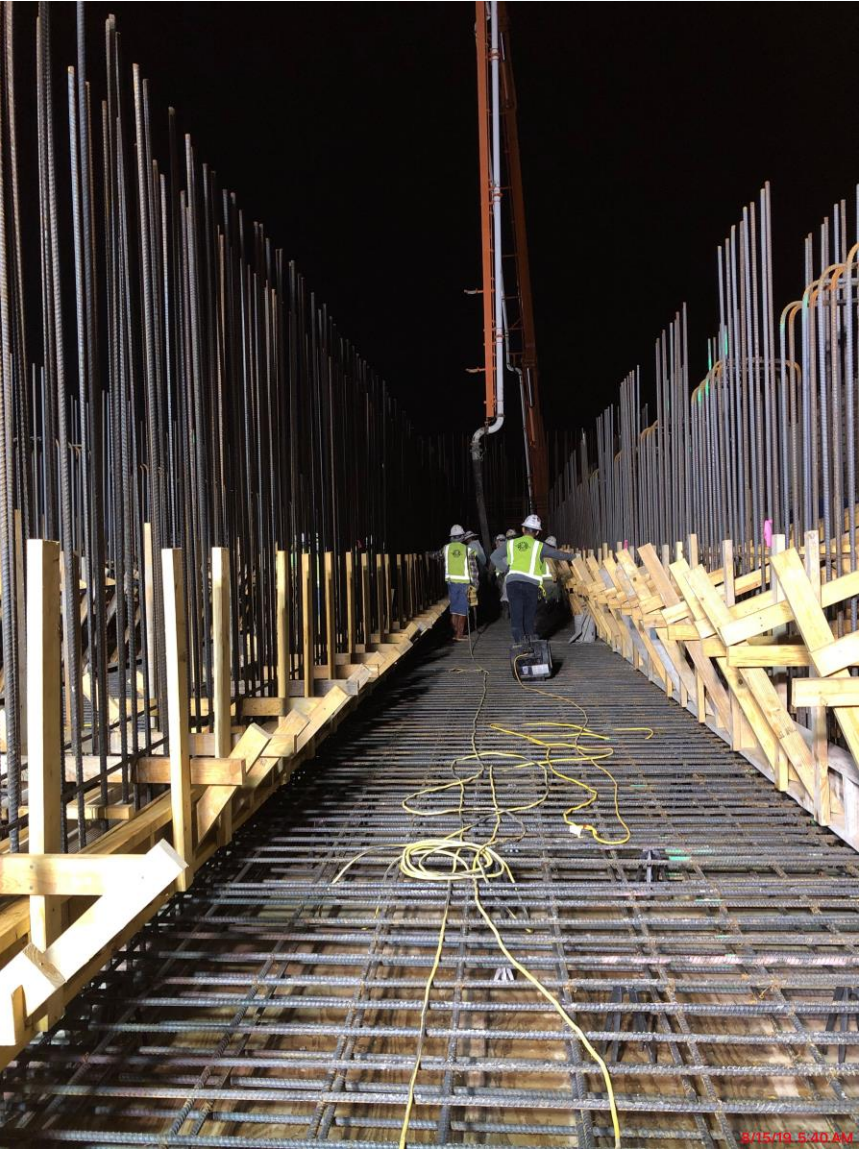
- **Lower Manifold Decks 7/8 Pour**
- **Poured Base Slab D1B**
- **Tying Rebar for Filter 12 Slab**
- **Installing Flex Coupling on 84" CFE**
- **Tying/Forming Walls**

TPS:

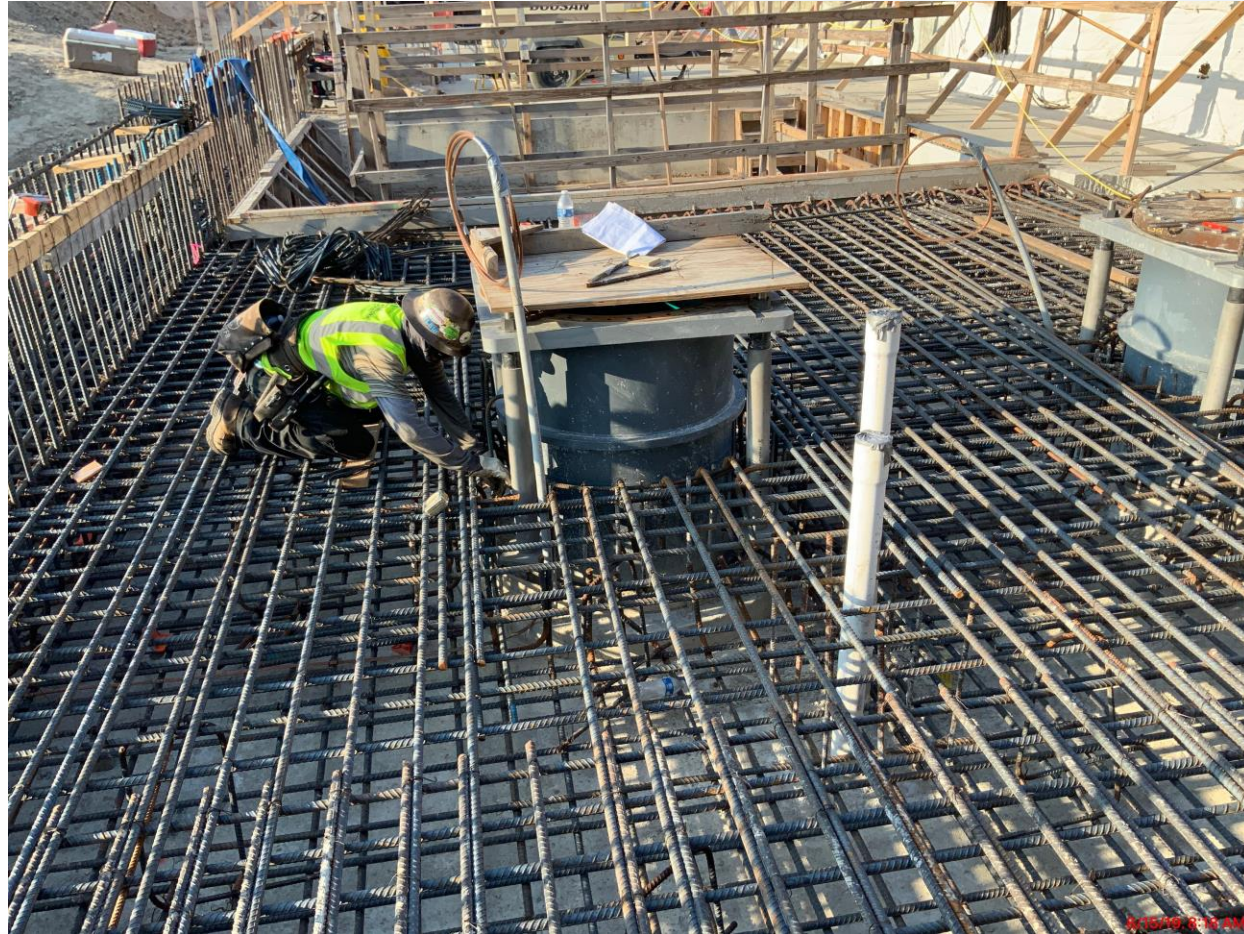
- **Pump Cans Prep for Installation**
- **RFP Columns at Overflow Channel**



FILTER STRUCTURE- Lower Manifold Decks 7/8 Pour



FILTER STRUCTURE- Poured Base Slab D1B



FILTER MODULE- Tying Rebar for Filter 12 Slab



FILTER MODULE- Flex-Coupling Installation on 84" CFE to TPS (West Side)



8/15/19 8:25 AM

Houston Waterworks Team



FILTER MODULE- Tying/Forming Walls



TPS – Prepping Pump Cans Installation



TPS –FRP Columns at Overflow Channel



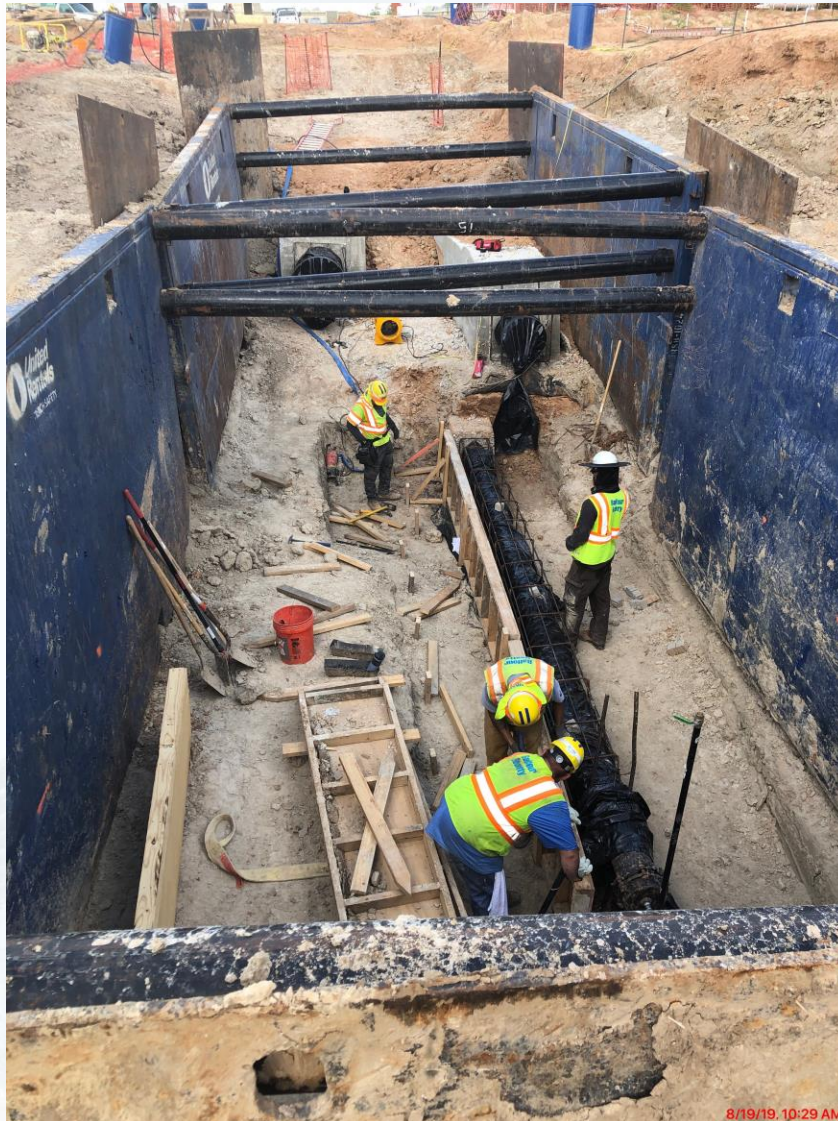


Construction Progress – EWP 6 North Plant

- **242 Cross Collector Walls Rebar/Form/Pour**
- **242 U/G Piping (PDR, RCYS)**
- **241/242 Vaults and Stem Walls**
- **611 Sump Walls Rebar/Form/Pour**
- **222 Excavation**



8" RCYS and 16"/24" PDR Pipe Installation



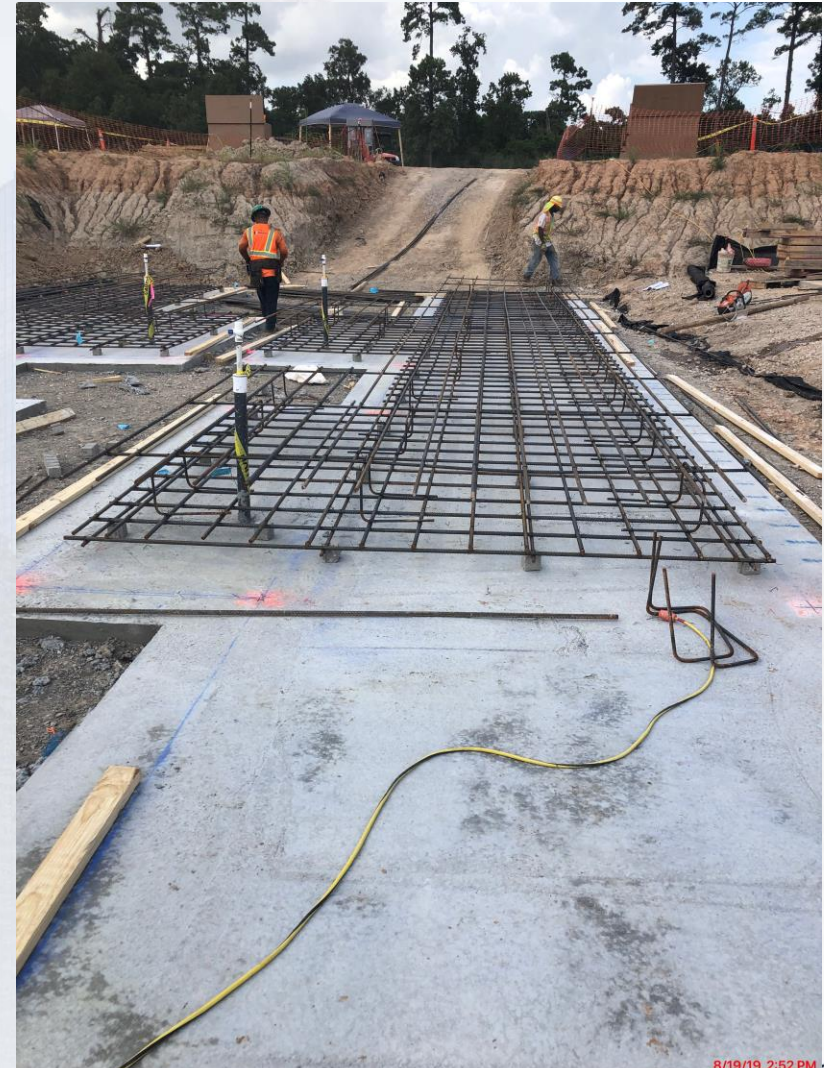
241/242 Stem Wall mud mat



241/242 Stem Wall slab-on-grade Rebar



8/19/19, 9:49 AM



8/19/19, 2:52 PM

Starting Excavation for Rapid Mix 222



242 Cross Collector Wall Rebar and Concrete Placement



611 Sump Wall Concrete and SOG Backfill





Construction Progress – EWP 6 IPS

- **Driving Piles**
- **Delivery of 10' Pump Can Casings.**



Driving Piles

A construction site in a body of water. A large red crane is positioned on a barge or platform, with its boom extending upwards. Several tall, dark vertical piles are visible, some already partially submerged. The water is blue and slightly rippled. The sky is overcast with grey clouds. A dark grey diagonal shape is overlaid on the left side of the image, containing the text 'Driving Piles'.

10' Pump Can Casings







Construction Progress – EWP 6 Substation Facility 102

- **Installation of Construction Entrance Road 1**



Installation of Construction Entrance Road 1



