



CITY OF HOUSTON
Houston Public Works

DESIGN-BUILD SERVICES

Northeast Water Purification Plant Expansion

Houston Waterworks Team





Construction Progress – EWP 1 & 3 Site Development

September 11, 2019

- **Completing EWP1 Punchlist items: Grouting Manholes, installing temp water lines and ARVs**
- **Relocating soil pile from South plant area**
- **Performed line stop and relocated 4-in Waterline from craft parking lot**
- **Performing 8-in Hot tap on existing 20-in header at HSPS for Trailer City 2.0 Waterline**



Site Crew relocating soil pile from South Plant area



Performed line stop and relocated 4-in Waterline



Installing two temp water lines for North Plant



Performing 8-in Hot Tap for Trailer City 2.0 Waterline



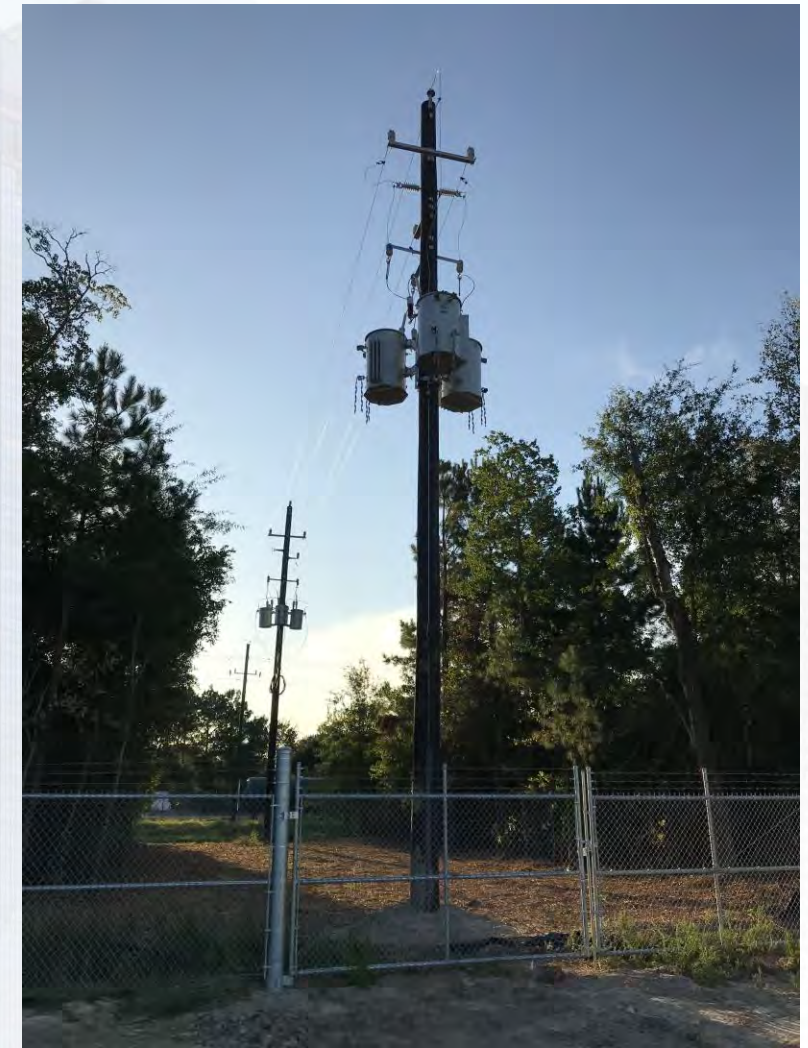


Construction Progress – EWP 1 Temporary Power

- **Complete South Plant Temp Power T-362, T-HSPS and Main Feed**
- **12.47kV- 480V Transformers/Pole and Local Disconnects**
- **T-292 Relocate (Directional Bore), T-312 Relocate (Directional Bore)**
- **T-601 EQ Basin Temporary Power**
- **Clear Overgrowth at CenterPoint Energy® R-O-W, Lewis Tree Service®**
- **H12 East Plant Temporary Service Size Increase, CenterPoint Energy®**



Temporary Power East Plant



Temporary Power South Plant, HSPS





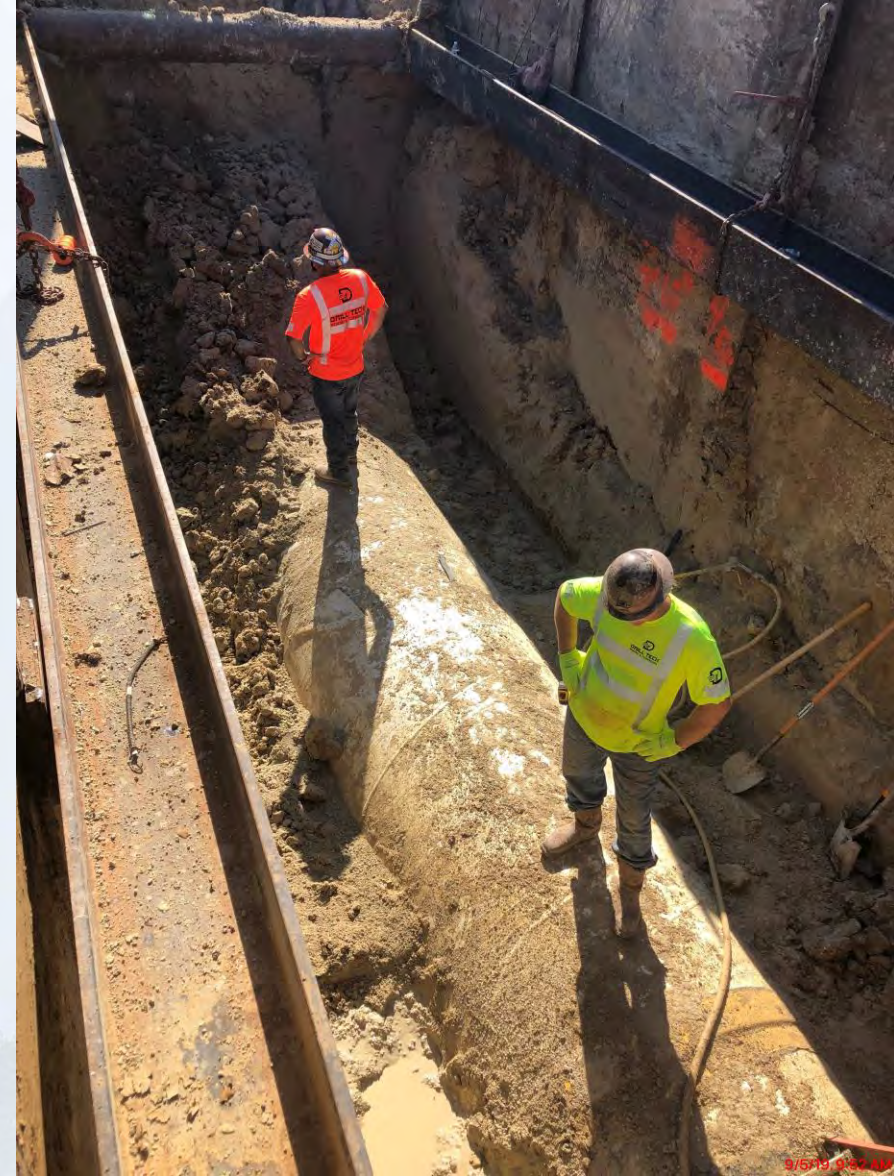
Construction Progress – EWP 4 Raw Water Corridor

- **Laying 108 RW Pipe in West Corridor**
- **Loading and welding pipe in tunnel**
- **Trench Excavation**
- **Welding joints**
- **Storm Drainage Installation**
- **Box culvert support system installation**

Sta. 142+50 Excavation and Temp Drainage Installation



Shoring Removal and Excavation for exist 66 inch RW



CLSM Placement



9/9/19, 7:06 AM

Dual 108 Pipe Installation at Sta. 100+50



Sheet Pile Shoring Installation at Sta. 128+50



9/4/19, 1:19 PM



Construction Progress – EWP 2 Filter Structure & TPS

FILTER STRUCTURE:

- **Pouring Walls & Filter 12 Slab**
- **Forming Upper Manifold Decks 9/10**
- **Tying/Forming Walls**

TPS:

- **Install Base Plate Anchor Bolts at Pump Cans**
- **RFP Columns at Wet Well**



FILTER MODULE- East Side Work Area



FILTER MODULE- Shoring & Tying Rebar for Lower Manifold Decks 11/12



FILTER MODULE- Reinforcing & Pouring Upper Manifold Decks 9/10



FILTER MODULE- Tying/Forming Walls



FILTER MODULE- Pouring Walls



TPS – Forming/Tying Columns in Wet Well



TPS – Install Base Plate Anchor Bolt For Pump Cans





Construction Progress – EWP 6 North Plant

- **Excavating Facility 214**
- **Placing Facility 222 Mud Mat and installing sump formwork and rebar**
- **Reinforcing Facility 241 Stem Wall and placed concrete**
- **Reinforcing Facility 242 Stem Wall**
- **Cross Collector Prelim Leak Test**
- **Installing Facility 242 Piping**
- **Placing Facility 611 Mud Mat and SOG Formwork**



Facility 214 Excavation



Facility 222 Mud Mat Placement and Sump Formwork and Rebar Placement



Facility 241 Stem Wall Rebar and Concrete Placement



Facility 242 Stem Wall Rebar and Cross Collector Prelim Leak Test



Facility 242 Underslab Piping



Facility 611 Mud Mat and SOG Formwork





Construction Progress – EWP 6 IPS

- **Completion of Platform Piles**
- **Preparing To Drive 10' Pump Can Casings.**





Platform Pile Completion



Preparing To Drive 10' Pump Can Casings





Construction Progress – EWP 6 Substation Facility 102

- **Install Limestone Rock for Laydown**
- **Dacon Mobilizing**



Install Limestone Rock for Laydown



Dacon Mobilizing





Construction Progress – BOP LREQ Basins Facilities 601/602

- **Clearing and Grubbing**
- **Installation of Temporary Power**



Clearing and Grubbing



Installation of Temporary Power





Construction Progress – Yard Piping

- **Demolishing: Removing, crushing, and disposing of the existing 36-in and 30-in Finished Water (FW) Pipe**



Demolishing Existing 36-in FW Pipe



Demolishing Existing 30-in FW Pipe and Manholes





Construction Progress – Administration Building

- NP Phase 1 West Pond Fill and Compact
- Backfilling West Pond using onsite material

West Pond Fill and Compact



Backfilling West Pond using onsite material

