



WATER PURIFICATION PLANT EXPANSION

Community Update

September 1, 2020



Central Harris County
Regional Water Authority



Safety Moment

Work on the Northeast Water Purification Plant expansion is considered essential so our team has continued to operate since the pandemic began:

We are no longer holding face to face meetings inside;

We are no longer offering tours of the facility;

We are not making any home visits;

We are wearing masks, washing our hands and spacing out staff;



Safety Moment

SOCIAL DISTANCING

Social distancing is the practice of reducing close contact between people to slow the spread of infections or diseases. Social distancing measures include limiting large groups of people coming together, closing buildings and canceling events.

AVOID

- Athletic Events
- Church Services
- Concerts
- Crowded Stores
- Group Gatherings
- Malls
- Non-essential Workers in Your House
- Playdates
- Theater Outings
- Traveling
- Sleepovers
- Workouts in Gyms
- Visitors in Your House

KEEP YOUR DISTANCE

Keep at least 6' - 8' between yourself and others

- Pick Up Medications
- Playing in a Park
- Visit a Grocery Store
- Visit a Local Restaurant to Get Take Out

SAFE TO DO

- Clean Out a Closet
- Cook a Meal
- Family Game Night
- Go for a Drive
- Go for a Hike
- Group Video Chats
- Listen to Music
- Stream a Favorite Show
- Take a Walk

We are socially distancing;

We are not coming to work sick or with symptoms of COVID;

We are committed to keeping our workers and our neighbors safe;

We are holding our public meeting by webinar, rather in person, tonight.

We hope you all stay safe and healthy!



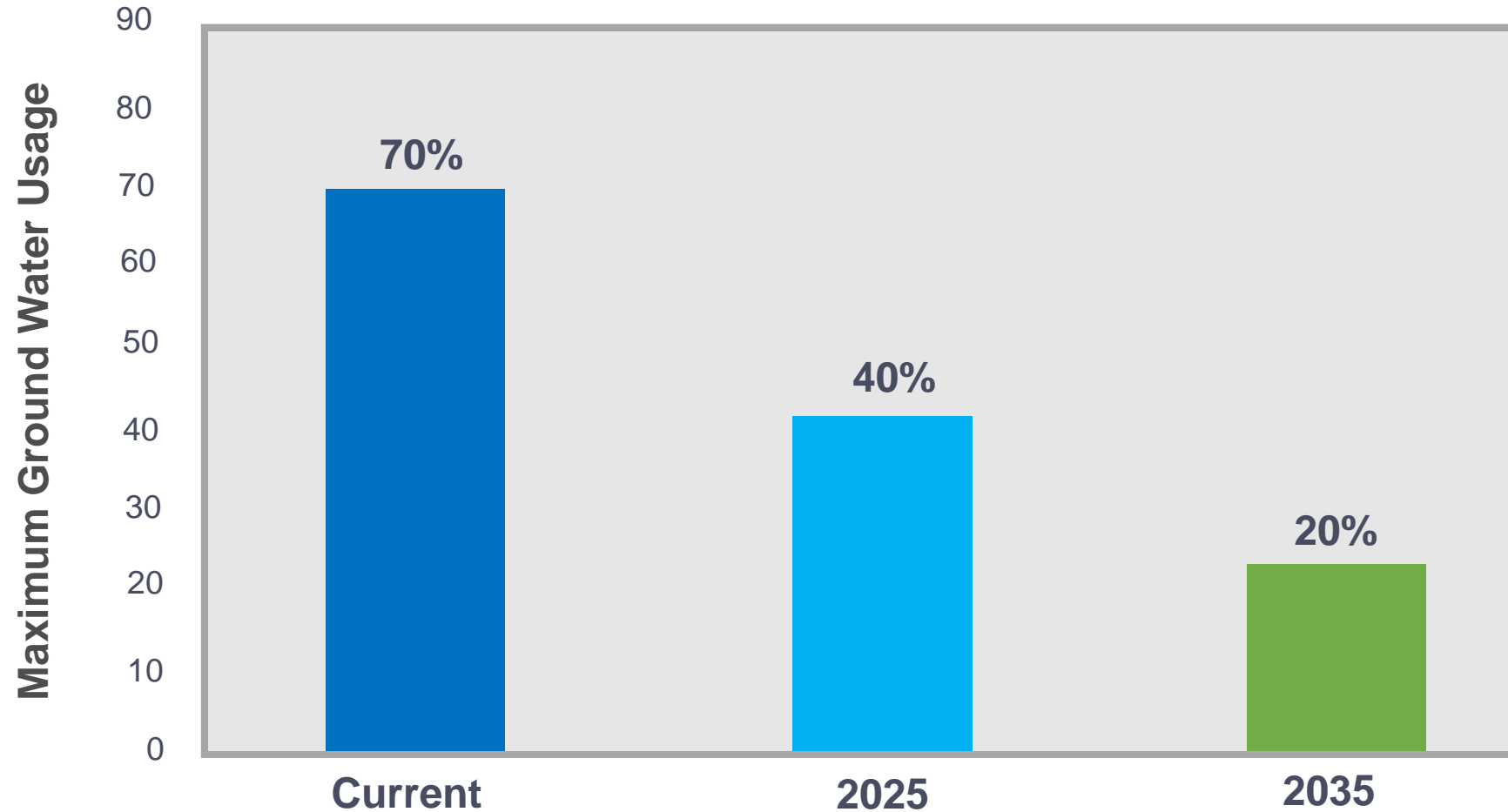
ALL IN COMPLIANCE WITH THE CENTER FOR DISEASE CONTROL (CDC) GUIDELINES

Contents

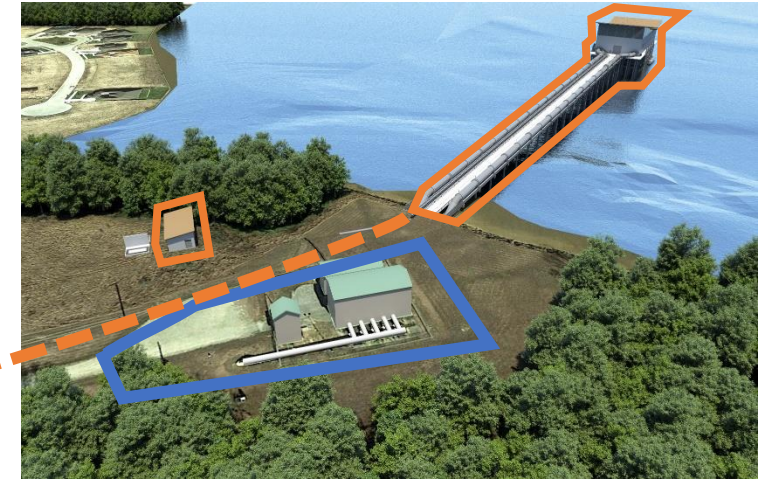
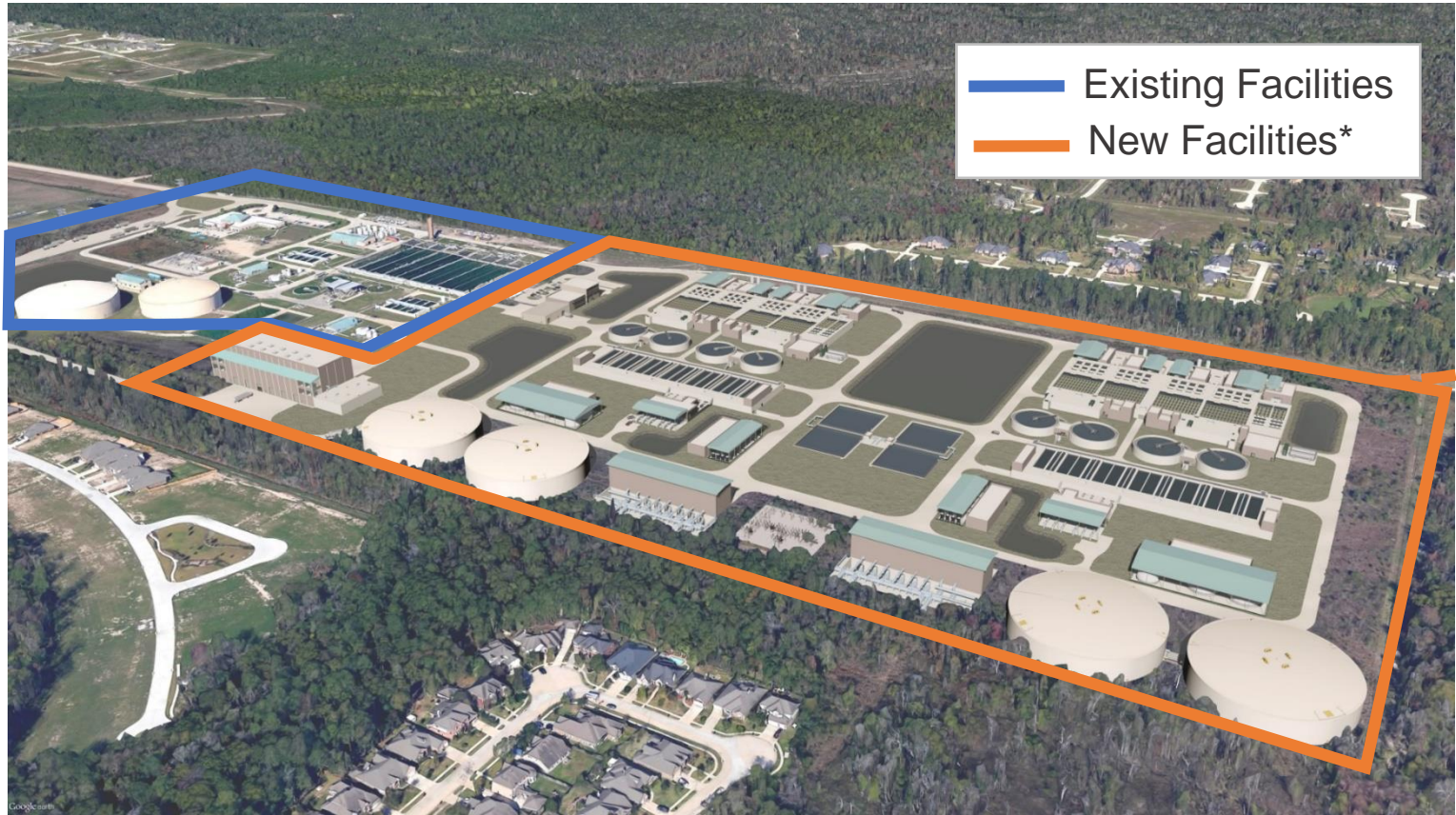
- 1 Project background
- 2 Progress to date
- 3 What's next
- 4 What we have heard
- 5 Questions

Project Background

Subsidence regulations are a key driver for project



Northeast Water Purification Plant



Intake Pump Station

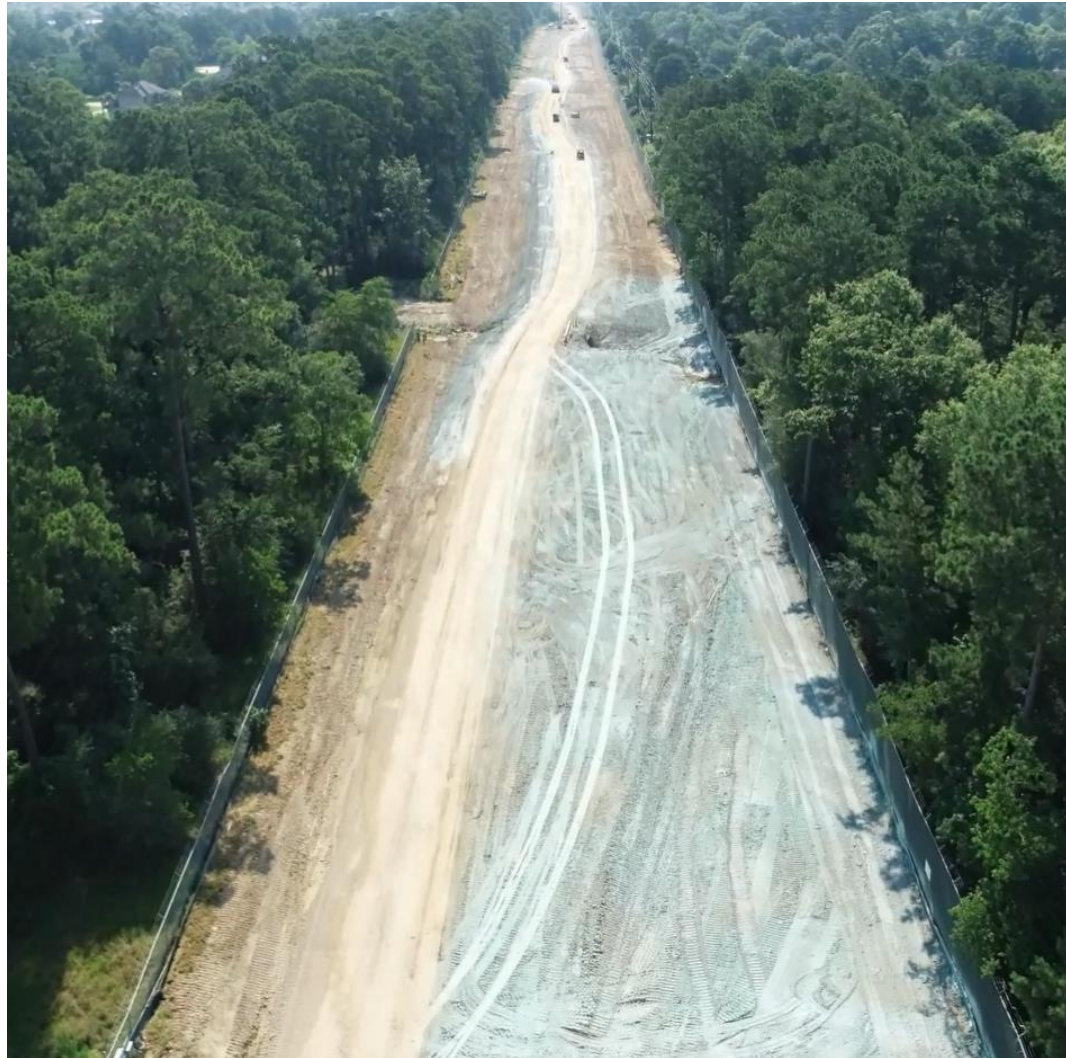
Raw Water Pipelines*

Treatment Facilities

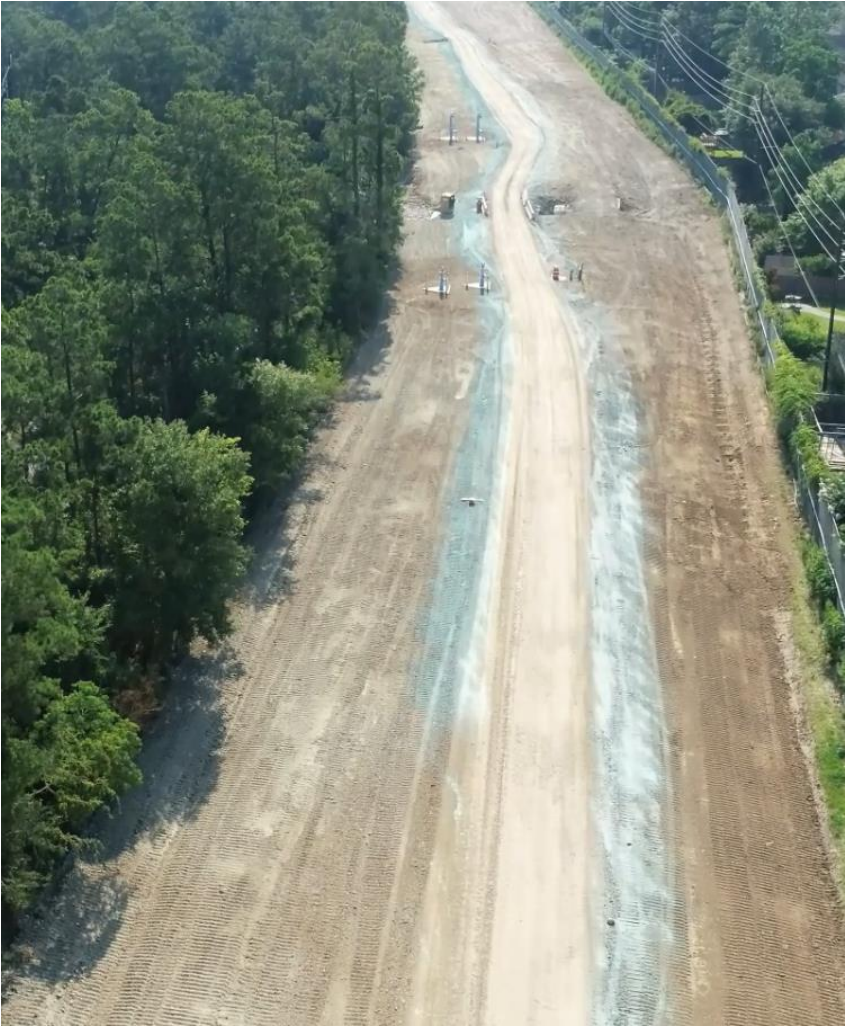
* new facilities shown are renderings of the completed project

Progress to Date

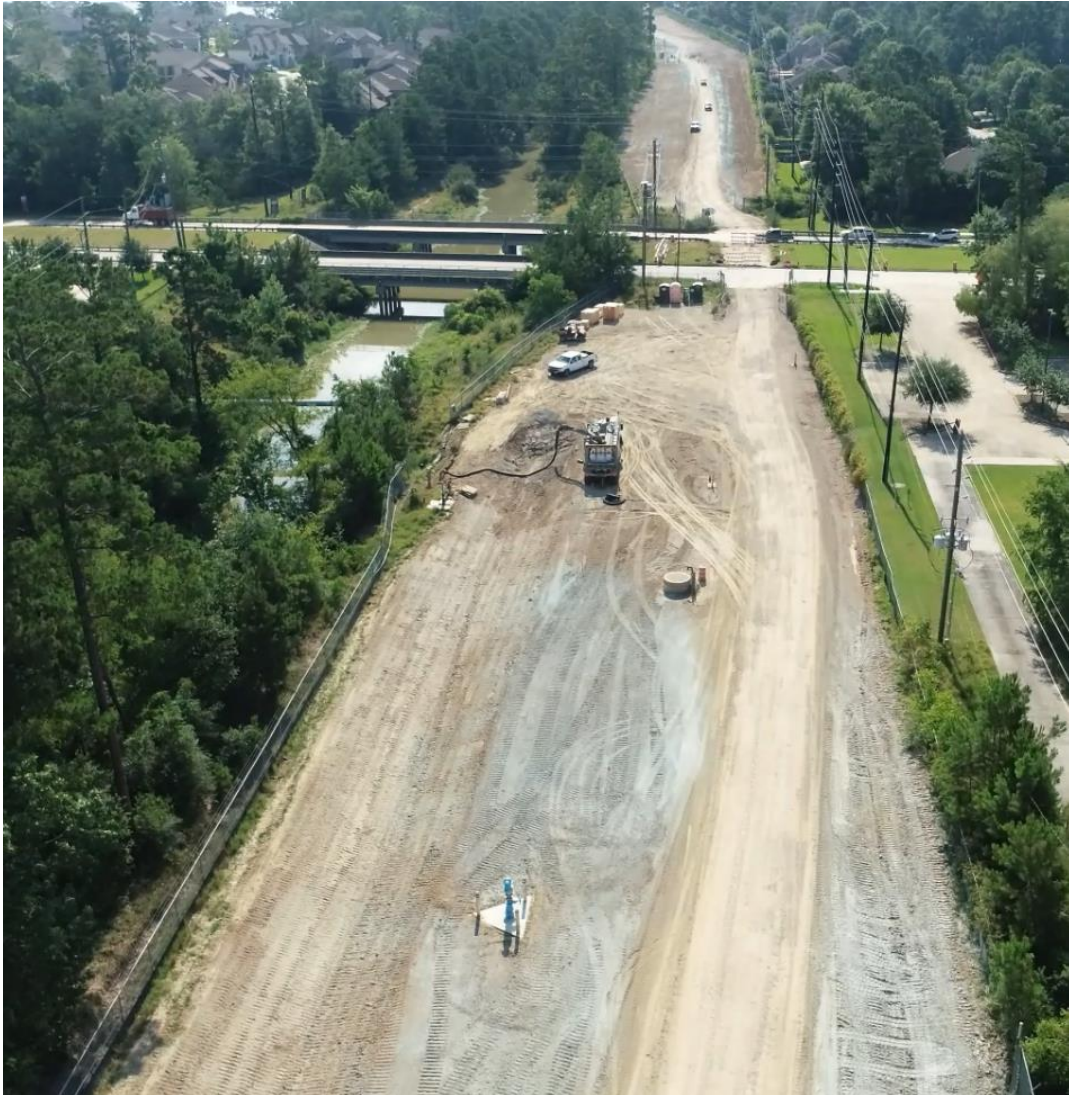
Pipe Installation in the West Corridor



Pipe Installation in the East Corridor



Pipeline in Tunnel under Lake Houston Parkway



Work on Intake Pump Station



Plant Site Construction



What's Next

Electrical Conduit Installation in the Raw Water Corridor



Raw Water Corridor Utilities



Lake Houston Intake Pump Station



Construction at Plant



Next Steps

WHAT?	WHEN?
Pipeline Installed West to East	Completed (<i>see Ductbank Installation and Road Restoration below</i>)
Intake Pump Station at Lake Houston	Feb. 2019 – 2022
Duct bank & Utilities Installation and Road Restoration	Sept. 2020 – Dec. 2021
Plant Construction Site	Ongoing – 2025
Installation of 2 nd Tunnel under W. Lake Houston Parkway	2021 – 2022
Beautification (trees, intake pump station)	2022

What We've Heard & What We've Done

What We've Heard & What We've Done

Construction noise at the plant:

The City of Houston spent thousands of dollars replacing back-up beepers with “growlers”

Traffic Impacts at W. Lake Houston Parkway:

Reduced lane closures in Summer 2020

Overgrown Weeds:

A sub-contractor has been hired to remove the weeds as needed

Flooding/Drainage:

Removed tree stumps and obstructions from Jack's Ditch to improve drainage

What We've Heard & What We've Done

We will try to mitigate whatever issues you raise

In preparation of Hurricane Laura

- we lowered all cranes
- secured all barges
- readied all pumps and drainage
- secured all loose materials
- walked the pipeline corridor to make sure there were no blockages or drainage issues

Our goal is to be good neighbors so we will do what we can to live up to that goal



Our Good Neighbor Practice

In response to your calls, we have adopted a Good Neighbor Practice which gets reviewed at our weekly meetings. That policy includes addressing your concerns. Our goal is to be good neighbors.

Some concerns from our previous Public Meetings have resulted in these responsive actions:

- No work before 7AM or after 7PM (*hours modified in certain areas due to heat, worker safety and activity*)
- Be mindful of how closely we are working to people's homes
- Reduce backing up equipment as much as possible
- No foul language or loud music

Just in case.....

- If you are concerned about the proximity of the construction to your home please take photos before and after construction so you can show any damage that you may think was caused by the contractors working in your area.
- The City of Houston has, and may, pay for incidental minor damage to your homes if you are able to demonstrate that damage was caused by the construction in your area; however, we must have before and after photographic evidence, completed claim forms and waivers before we can reimburse the cost of repairs.

Just in case.....

Damage Claims:

- If you feel you have damages greater than \$5,000, the City of Houston must refer your claim to the insurance carrier. The insurance carrier for the project will require proof that the damage was caused by the construction activity. You may need to hire a Professional Engineer to supply a signed and sealed affidavit certifying the cause of your damage in order for your claim to be submitted for payment. It is likely the insurance carrier will involve their legal team for large claims.

Contact us

GreaterHoustonWater.com
281-520-3777

newppexpansion@gmail.com

Please contact us at this email and phone number for faster response

Public meetings will be held regularly.
Our next Webinar will be held in January 2021.