



CITY OF HOUSTON
Houston Public Works

DESIGN-BUILD SERVICES

Northeast Water Purification Plant Expansion

September 23, 2020





Drone Site Map: September 17, 2020





Construction Progress – Intake Pump Station (IPS)

- Pump Can Formwork Installation
- Fishscreen Guide Installation Northside of the Platform



Pump Can Formwork Installation



Fishscreen Guide Installation Northside of the Platform





Construction Progress – Site Electrical

- MDB111A Installation
- Existing Plant Duct Bank Installation
- MDB520/MDB111A Duct Bank Installation



MDB111A Installation and Backfill




Existing Plant Duct Bank Installation



MDB520/MDB111A Duct Bank Installation





Construction Progress – Substation Facility 102

- **Installing stairs for the building**
- **Continue interior wall paint touch up and painting doors and frames**
- **Delivery and Setting of Switchgear**
- **Installation of busduct supports and duct bank**

Installing stairs for the building



Continue interior wall paint touch up and painting doors and frames



Delivery and Setting of Switchgear



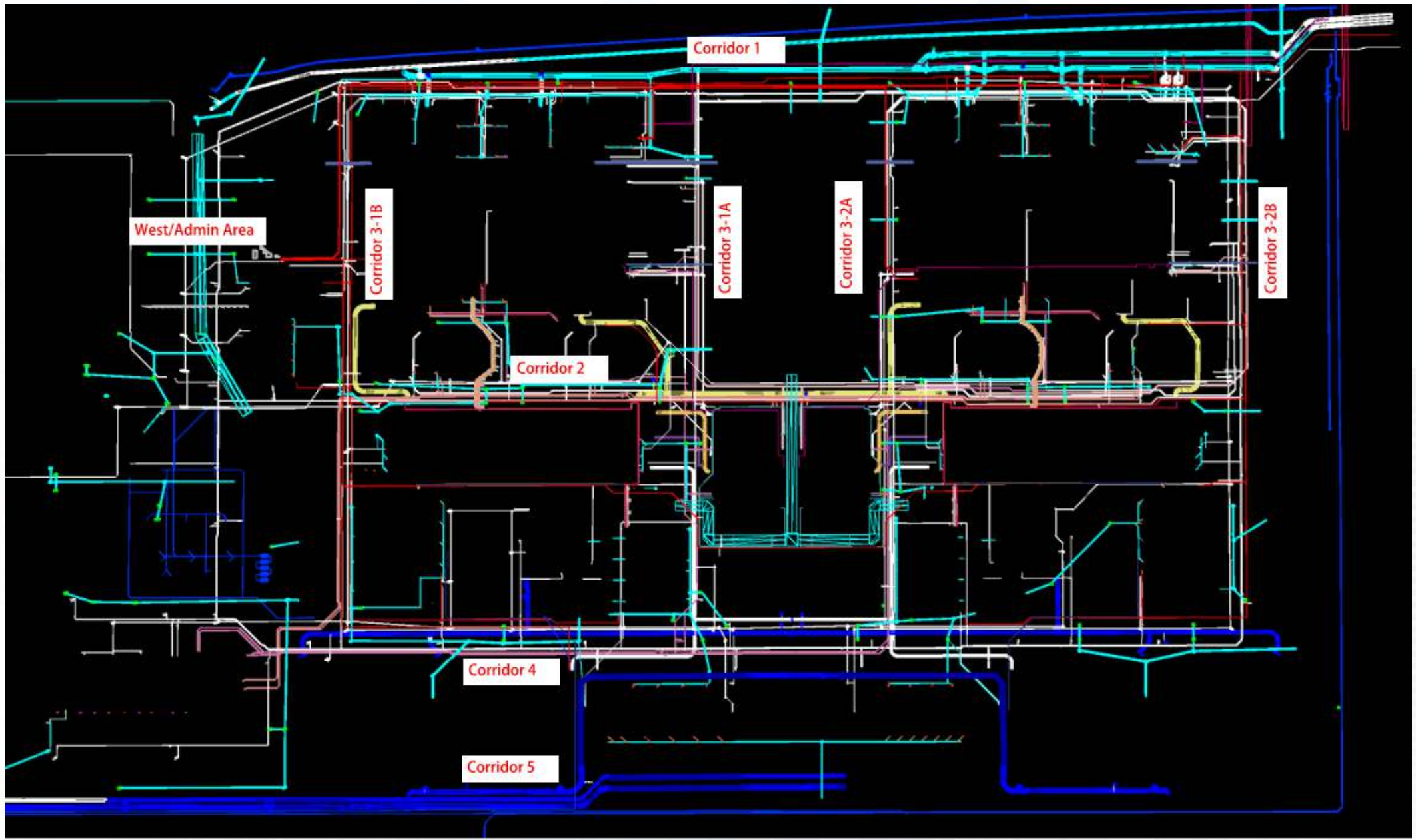
Installation of busduct supports and duct bank





Construction Progress – Yard Piping

- **Installing North 108” RW line in Corridor 1**
- **Installing Storm Sewer RCP in Corridor 1**
- **Installing 10” PW lateral in Corridor 3-1A**
- **Installing Storm Sewer RCP, inlets, and manholes in Corridor 4 & 3-1B**
- **Installing 10” PDR & SSG lines in Corridor 3-1B (by West Road)**
- **Installing 6” SSG lateral and Manhole 126 off Corridor 4 (Central Plant)**
- **Installing 12” PDR lateral off Corridor 4 (Central Plant)**
- **Laying 42” FTW pipe in Corridor 3-1A Central**
- **Set 96” FW valve in Corridor 4 and 78” FW BFV in Corridor 5**
- **Installing 96” FW lateral from Corridor 4 and header at TPS**
- **Reinforced and poured the 108” FW Valve support in Corridor 5**
- **Laying 84” and 120” FW distribution lines in Corridor 5**
- **Reinforced and poured the 102” FW Valve support in Corridor 5 (by GST 362)**



Installing North 108" RW line in Corridor 1



Installing Storm Sewer RCP in Corridor 1



Installing 10" PW lateral in Corridor 3-1A

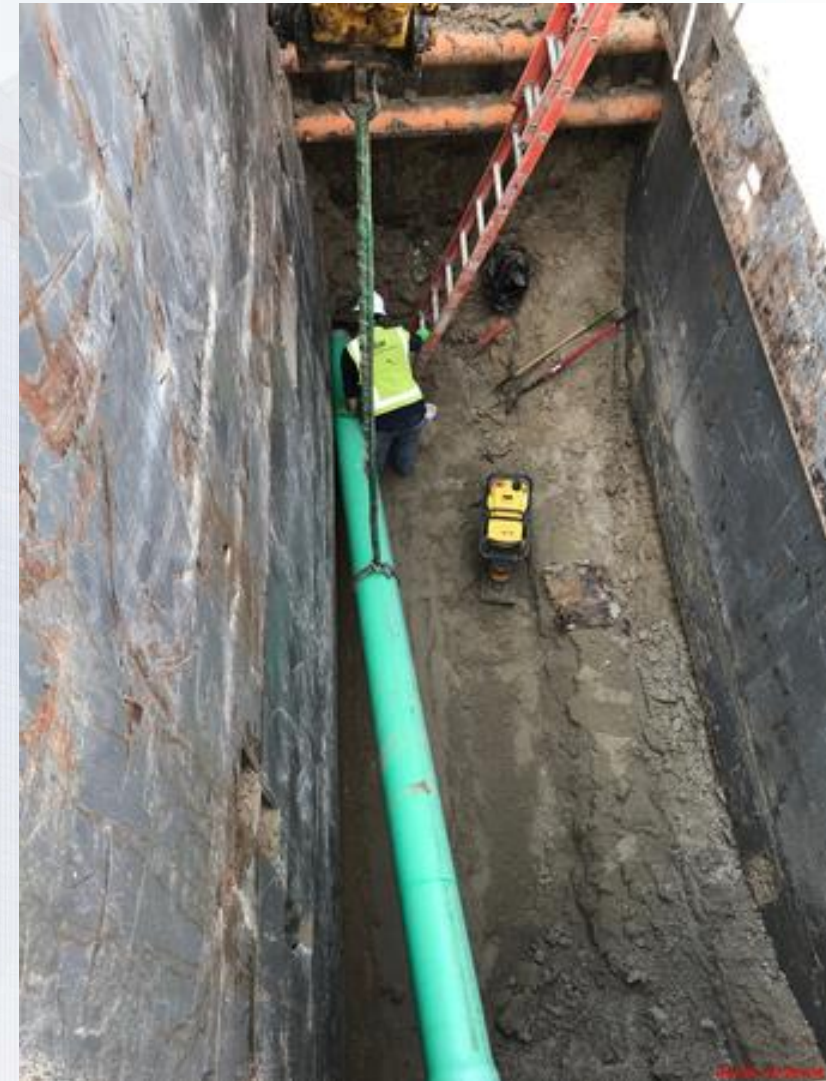


Installing Storm Sewer RCP, in

Corridor 4 & 3-1B



Installing 10" PDR & SSG lines in Corridor 3-1B (by West Road)



Installing 6" SSG lateral and Manhole 126 off Corridor 4 (Central Plant)



Installing 12" PDR lateral off Corridor 4 (Central Plant)



Laying 42" FTW pipe in Corridor 3-1A Central



Set 96" FW BFV in Corridor 4 and 78" FW BFV in Corridor 5



Installing 96" FW lateral from Corridor 4 and header at TPS



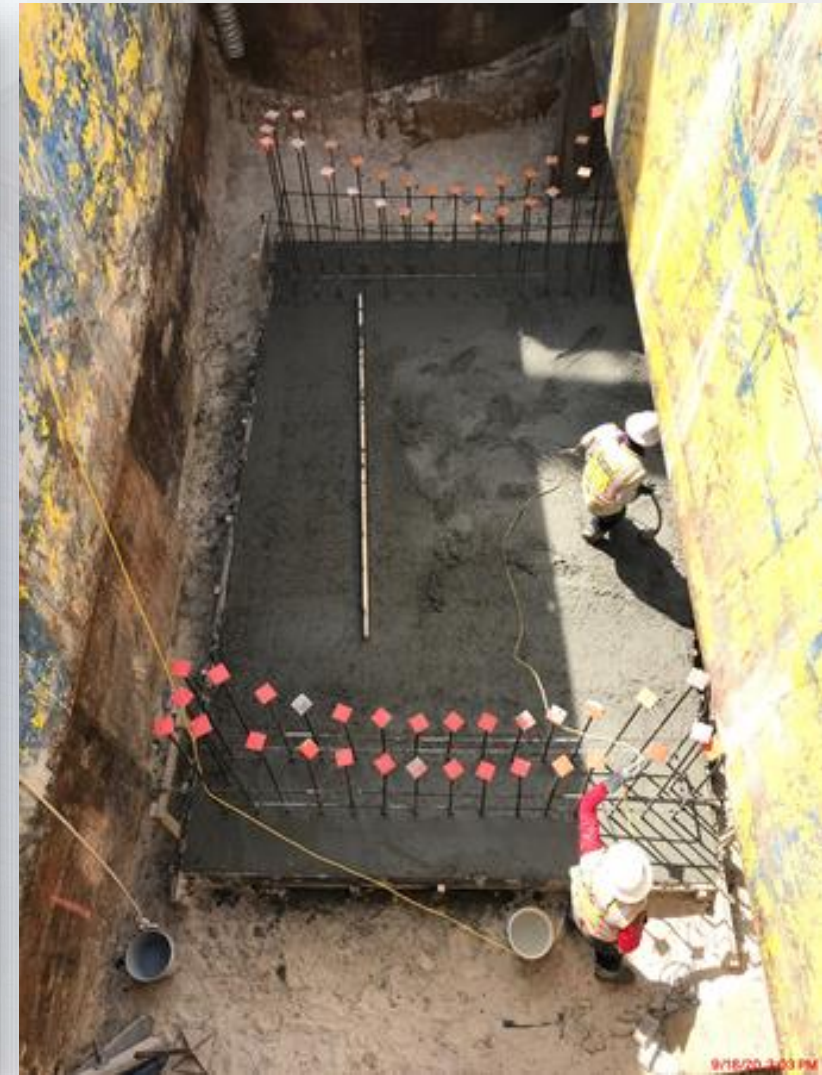
Reinforced and poured the 108" FW Valve support in Corridor 5 (North of 111)



Laying 84" and 120" FW distribution lines in Corridor 5



Reinforced and poured the 102" FW Valve support in Corridor 5 (by GST 362)





Construction Progress – Central Plant

281-FILTER MODULE 1 :

- **Forming/Reinforcing Walls.**
- **Pouring Walls.**
- **East Side Masonry.**
- **Reinforcing West Gallery Top Deck A2**
- **Pouring West Gallery Deck A1.**

291-TRANSFER PUMP STATION 1:

- **Place Grout at Pump Cans' Top Plate**
- **Install 96" Header**

292-TRANSFER PUMP STATION 2:

- **Backfill Pump Can Slab Excavation**

311-POST CHEMICAL FACILITY 1 SH/CS :

- **Footing Reinforcement –Building Electrical Room**
- **Containment Walls RFP –Containment Area**
- **Special Coating application –SH Tank Pads**

312 – POST CHEMICAL FACILITY 2 FA/LAS/PEC/SB

- **Installation of Underground Conduit –Containment Area**
- **Installation of Underground Conduits – Building Area.**

282 -FILTER MODULE 2:

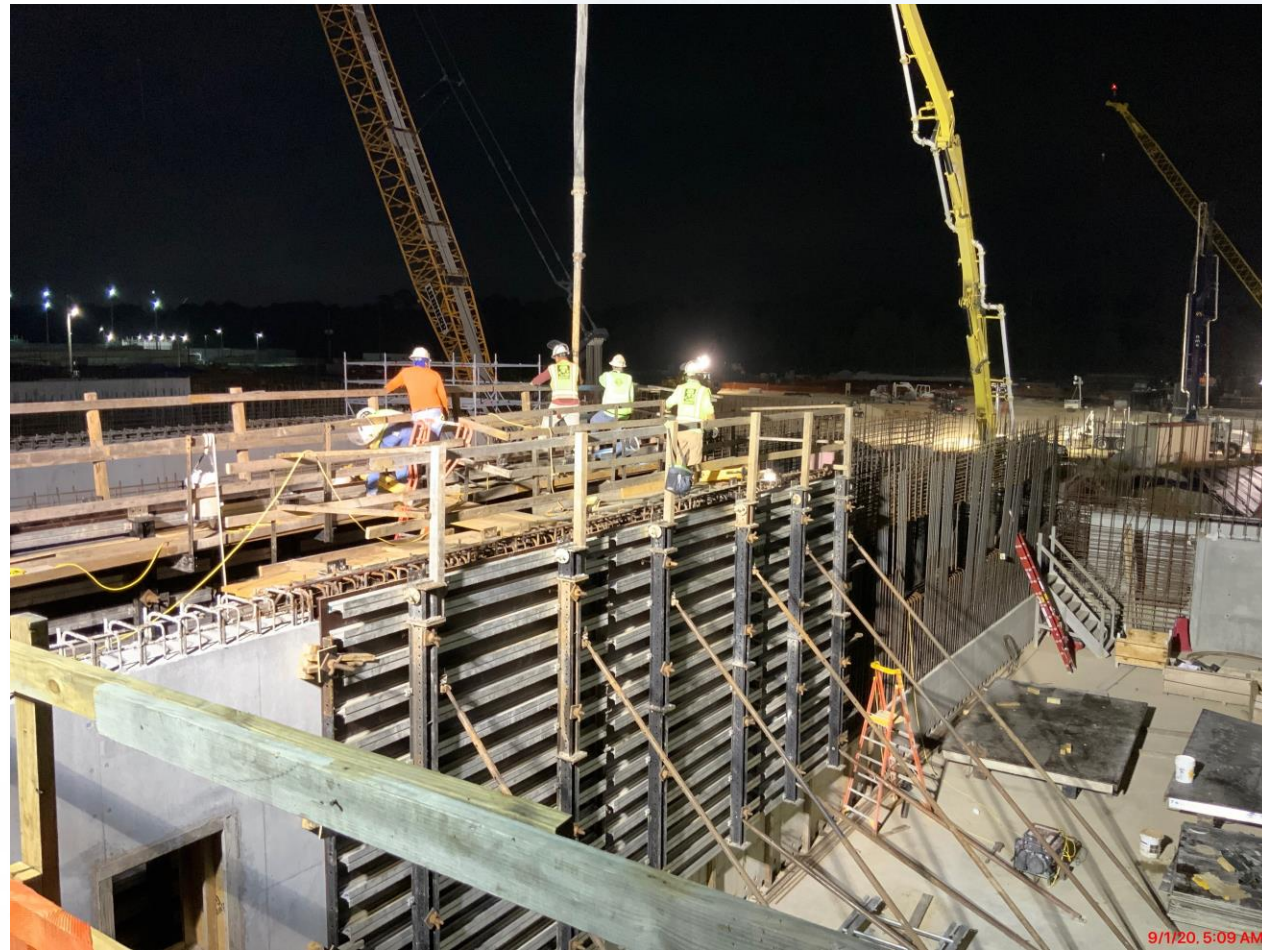
- **Reinforcing/Pouring Base Slab 1**
- **Reinforcing Base Slabs 2.**



281-FILTER MODULE-Forming/Reinforcing West Filter Walls



281-FILTER MODULE-Pouring Walls



281-FILTER MODULE- East Side Masonry



281-FILTER MODULE- Reinforcing Gallery DeckA2



281-FILTER MODULE- Pouring Gallery Deck A1



291– Top View 09/01/2020



291– Place Grout at Pump Cans' Top Plate



291– Install 96" Header



311-Post Chemical Building Area: Footings RFP



311-Post Chemical Tank Farm: Containment Walls RFP



311-Post Chemical Building: CRC application SH Tank Pads



312-Post Chemical Containment Area : Installation UG Conduits



312-Post Chemical Building Area : Installation UG Conduits



282- FILTER MODULE 2- Reinforcing/Pouring First Foundation Slab



282-FILTER MODULE 2- Reinforcing Foundation Slab 2



292 – Backfill at Pump Can Slab





Construction Progress – LREQ Basins Facilities 601/602

- **601 – Installation of shoring for Pump Station deck**
- **601 – Continue overhang bracket install for walkway**
- **602 – Formwork and Rebar Installation for Pump Station**



601 – Installation of shoring for Pump Station deck



601 – Continue overhang bracket install for walkway



602 – Formwork and Rebar Installation for Pump Station





Construction Progress – North Plant

213-Pretreatment Chemical Facility 3:

- Structural Concrete Work

214-Pretreatment Chemical Facility 4:

- Structural Concrete Work

222-Rapid Mix Train 2:

- EL-SL-2 Placement
- Walls F/R/P

241-FlocSed Train 1

- Cross Collector Slabs and Walls F/R/P

242-FlocSed Train 2

- Elevated Slab Column F/R/P
- Knife Walls
- SL-35 Concrete Placement

244-FlocSed Train4

- East/West Corridor Backfill

252-Ozone Contractor Train 2:

- WL-4/WL-4a F/R/P
- Victaulic Coupling

502-Gravity Thickener Complex 2

- Basin #4 Weir Channel F/R/P
- Basin #3 Walls F/R/P

504-Gravity Thickener Complex 4

- Basin #8 SL-1 F/R/P

611-Liquid Residuals Clarifier Facility 1:

- WDW-4 Placed
- WE-W F/R/P



Facility 213 - EL-SL F/R/P & Stem Walls Concrete Placement



Facility 214 – Concrete Tank Pads F/R/P



9/18/20, 2:51 PM

Houston Waterworks Team



Facility 222 - Walls F/R/P



Facility 241 – Cross Collector Slabs/Walls F/R/P



Facility 242 - EL-SL Columns, Knife Walls, EL-SL F/R/P



9/14/20, 1:08 PM

Houston Waterworks Team



Facility 242 – SL-35 Concrete Placement



Facility 244 – 24" PDR Backfill



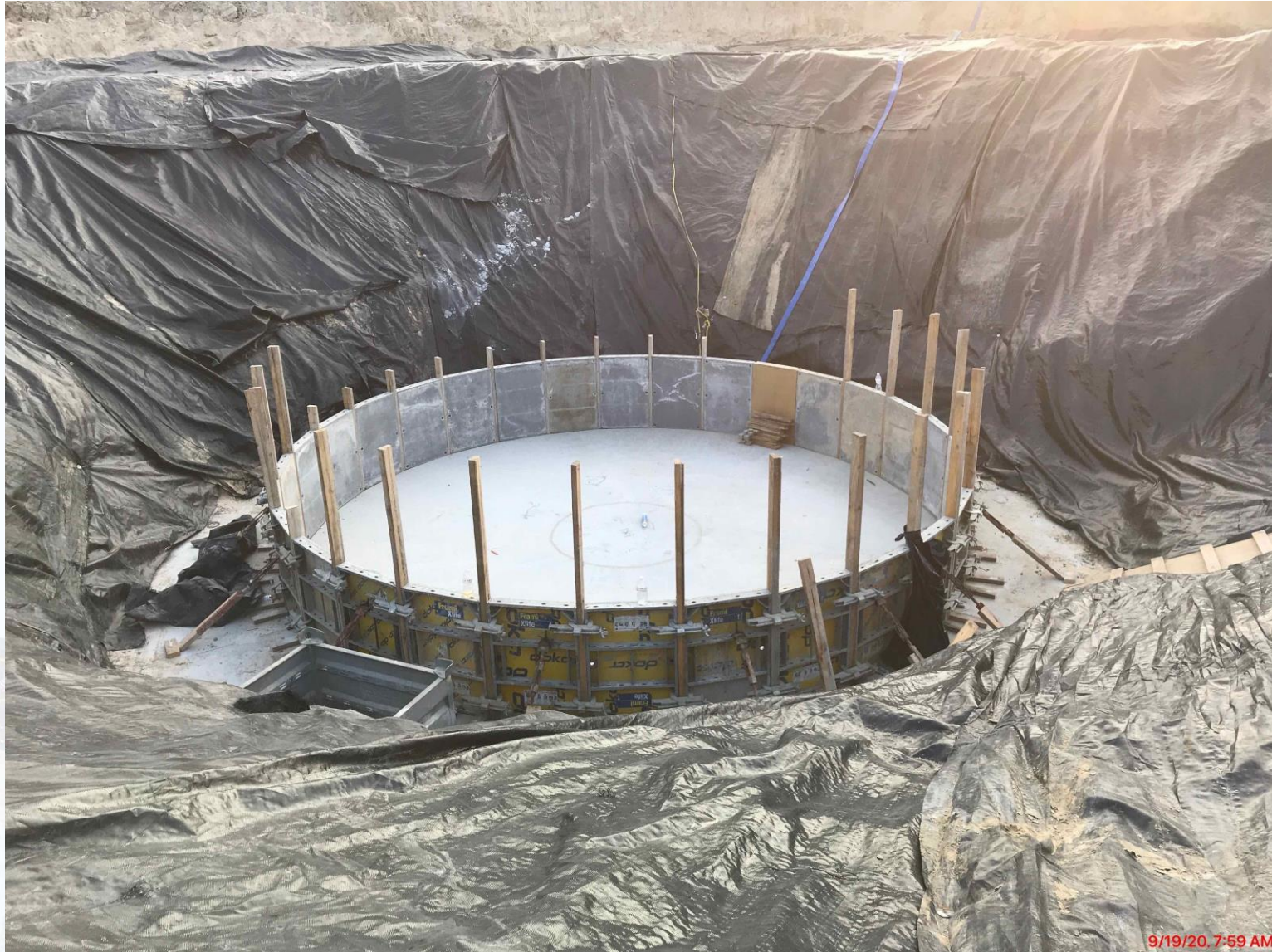
Facility 252 – Victaulic Coupling



Facility 502 - GT#4 Channel/Weir F/R/P and GT#3 Walls F/R/P



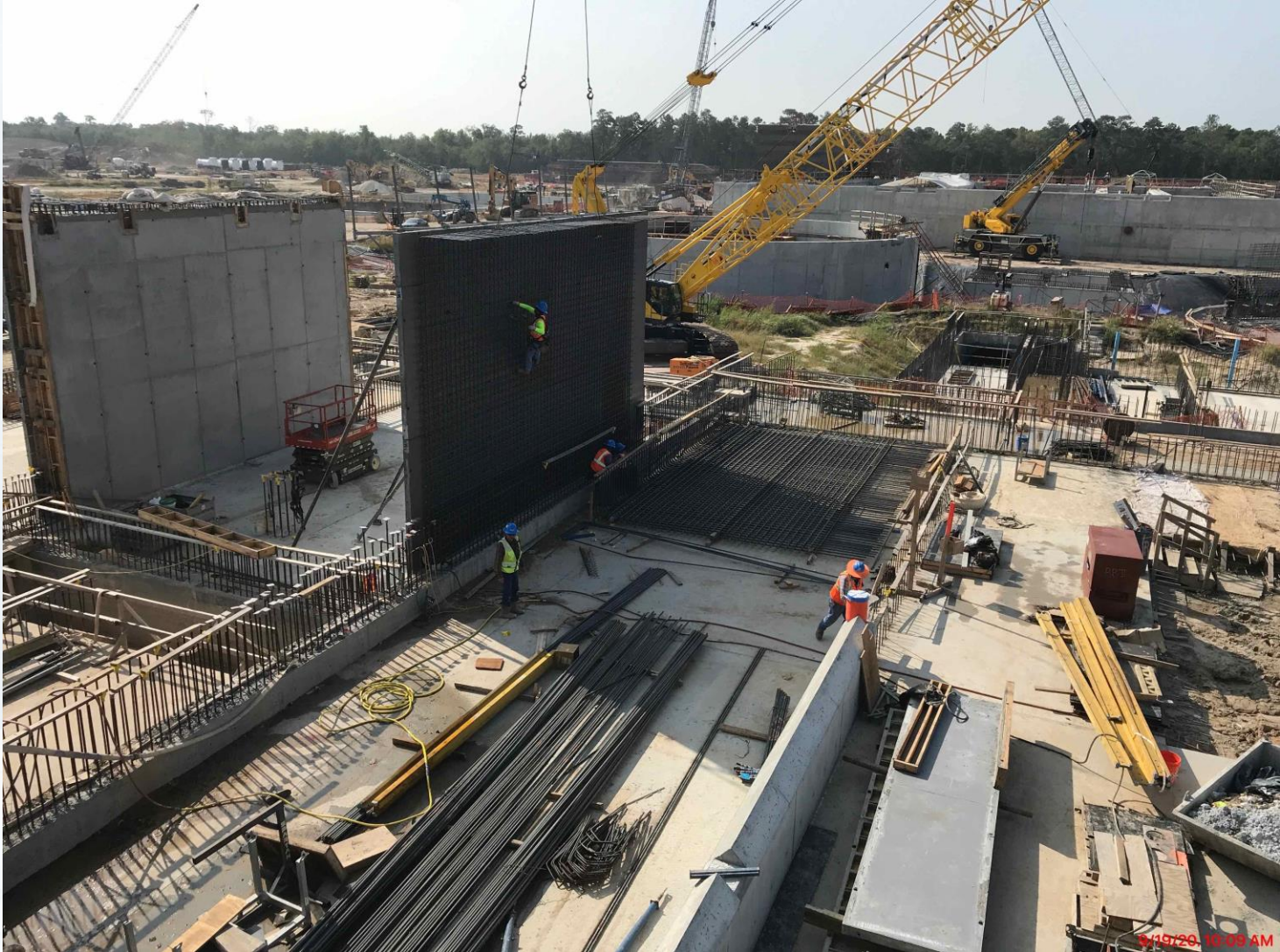
Facility 504 - GT#8 SL-1 F/R/P



9/19/20, 7:59 AM



Facility 611 – WDW-4 Complete & WE-W F/R/P



11/19/20, 10:09 AM

Houston Waterworks Team





Construction Progress – South Plant

- **Backfilling of 102” Outlet Pipe is Complete and Enclosed at GST 361**
- **Load Transfer Platform Installation at GST 362**
- **Installation of Roof Panels at MSB 111**
- **Installation of 78” Pipe and Encasement at HSPS 401**
- **Installation of Pump Can Encasement above Inlet Flange at HSPS 401**
- **Installation of Pump Can Footing Rebar at HSPS 402**
- **Cellular Concrete & TSL-OTSL Pipe Encasement at Sludge Equalization Building 510**
- **Erection of Structural Steel at Top Floor of Dewatering Building 520**
- **Installation of Grating on 2nd floor at Dewatering Building 520**
- **Installation of CMU at Dewatering Building 520**



Backfilling of 102" Outlet Pipe is Complete and Enclosed at GST 361



Load Transfer Platform Installation at GST 362



Installation of Roof Panels at MSB 111



Installation of 78" FW Pipe and Pump Can Encasement at HSPS 401



Installation of Pump Can Footing Rebar at HSPS 402



Cellular Concrete & TSL-OTSL Pipe Encasement at Sludge Equalization Building 510



Erection of Structural Steel at Top Floor of Dewatering Building 520



Installation of Grating on 2nd Floor and CMU at Dewatering Building 520





Construction Progress – Administration Building 080

- Completion of Reinforcement at Administration Building (AB)
- Began Erection of Structural Steel at Maintenance Building (MB)
- Placed SOG at AB

Erection of Structural Steel at MB



Erection of Structural Steel at MB



Completion of Reinforcement at AB



Placement of SOG at AB



