



WATER PURIFICATION PLANT EXPANSION



# NEWPP Expansion Project MONTHLY STATUS REPORT



November 2020

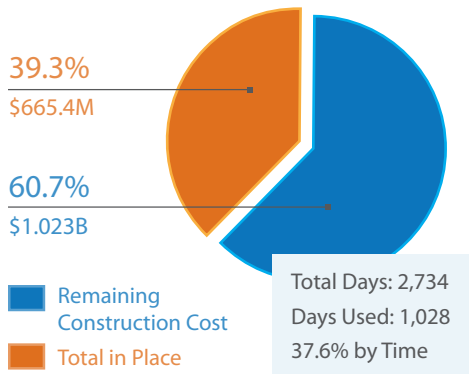
## KEY PERFORMANCE INDICATORS (KPI)

Status through November 2020

KPI	Description	Target	Status	Trend (from last update)	Notes
Phase 1 Completion	Phase 1 (80 MGD) Substantial Completion date	Jan 29, 2023	●	↓	November schedule update shows negative float. HWT working to rectify.
Phase 2 Completion	Phase 2 (240 MGD) Substantial Completion date	July 1, 2025	●	↓	November schedule update shows negative float. HWT working to rectify.
D-B Financial Performance	D-B Authorized Amount vs. July 2019 Budget	\$1.765B	●	▬	Expenditure status based on base GMP and other amounts as defined in Exhibit F of Amended and Restated Agreement.
Safety	Number of reportable events	0	●	↓	3,176M hours to date. 7 OSHA recordable incidents. 0 lost time incidents.

- Actual Ahead of Target
- Actual Nearing Target
- Actual Behind Target
- ↑ Status Improved From Last Period
- ↓ Status Declined From Last Period
- ▬ Same as Last Briefing

## CONSTRUCTION STATUS\*



\*Earned value based on current Design-Builder amount. Schedule based on duration from EWP 1 through Phase 2 Substantial Completion.

## M/WBE STATUS

### SUBCONSULTANT PARTICIPATION - HWT\*

M/WBE FIRMS – 12.5%

HWT – 87.5%

\*As reported on COH OBO B2G contract audit summary.

### SUBCONSULTANT PARTICIPATION - PATC\*

M/WBE FIRMS – 27.5%

CAROLLO – 72.5%

\*As reported on COH OBO B2G contract audit summary.

Percentages based on amount paid through Nov 2020

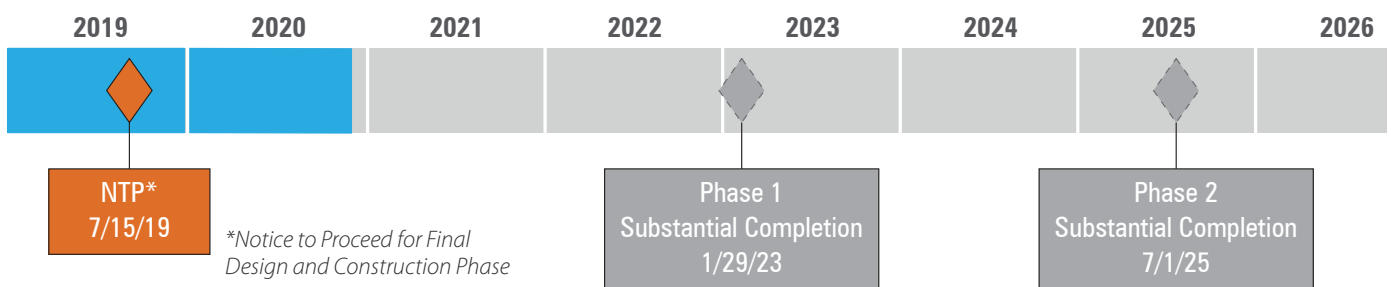
## BUDGET SUMMARY

Status through invoice dates listed below.

	Budget <sup>1</sup>	Authorized Amount <sup>2</sup>	Invoiced to Date <sup>3</sup>	Invoice Date/ % Invoiced <sup>3</sup>
Design-Builder (Houston Waterworks Team) <sup>4</sup>	\$1,765,532,834	\$1,691,461,246	\$665,381,311	Oct 2020/39.3%
Project Advisor/Technical Consultant (Carollo Team) <sup>5</sup>	\$95,759,349	\$89,520,497	\$41,552,469	Oct 2020/46.4%
Outside Legal (Hawkins Delafield and Wood)	\$2,131,590	\$1,931,590	\$1,591,995	Jul 2019/82.4%
City/Other <sup>6</sup>	\$21,022,642	\$21,022,642	\$11,480,011	Dec 2018/54.6%
Management Reserve <sup>7</sup>	\$88,243,764			
<b>TOTAL<sup>8</sup></b>	<b>\$1,972,690,179</b>	<b>\$1,803,935,975</b>	<b>\$720,005,786</b>	

- Budget as established July 2019.
- Equals budget plus executed change orders/amendments less non-approved allowances less non-utilized contingency as of reporting date.
- Sum total of approved invoices and City recovery costs as of Monthly Report issuance. Percentage = Invoiced/Authorized Amount.
- Original budget equals initial contract amount + amendments 1-8, including allowances and contingency.
- Original budget equals initial contract value + amendments/appropriations 1-6, minus adjustment per Cash Call #1.
- Includes City Recovery, mitigation costs, and other miscellaneous items.
- Owner's contingency used for funding approved change orders and other expenditures within Authorized Amounts column.
- Does not include Houston \$75M reserve for 425 MGD rating work.

## SCHEDULE STATUS



## NOTEWORTHY ACCOMPLISHMENTS

- **Central Plant:** Ongoing structural concrete for facility 281 and 282 filter modules 1 and 2; ongoing structural concrete placement facility 292 transfer PS 2; CS tank fabrication facility 311 post-chemical no. 1.
- **North Plant:** Ongoing structural concrete for work all structures; leak testing facilities 241 floc-sed train 1 and 502 gravity thickener #4.
- **IPS:** Ongoing installation of PS structural steel members, and bridge guide rails and utility rack.
- **Admin Building:** Erected roof at Admin Building; initiated CMU wall construction at Maintenance Building.
- **LREQ:** Finish interior of basin and installation of handrails facility 601; ongoing excavation facility 602.
- **Yard Piping:** Ongoing installation of 84- and 120-inch FW Corridor 5, 96-inch OZW Corridor 2-1AB, and various diameters Corridor 2-1AB.
- **South Plant:** Ongoing installation 78-inch inlet pipes facility 401 HSPS; completed masonry installation of 1st and 2nd floors in facility 520 dewatering building.
- **Substation and Site Electrical:** Ongoing installation DC battery system and bus duct at facility 102 substation; preliminary testing of 25kV switch gear; ongoing installation of duct bank and feeder cabling.

### 3-MONTH LOOK AHEAD

- Continue install 108", 84" & 120" FW pipelines in Corridor 5 - ongoing through February
- Install FW lines at Phase 2 GST area - ongoing through February
- Leak test Gravity Sludge Thickener Complex 2, Facility 502, and begin equipment installation - ongoing through March
- Complete Precast erection for Administration & Maintenance Building - December through January
- Excavate Liquid Residual EQ 602 Facility and begin slab on grade construction - December through February
- Backfill and complete pump concrete encasement HSPS Building 401 - January
- Begin foundation construction HSPS 401 - January through April
- Pull MV conductor cable from Substation 102 to MSB 111 - December through January
- Continue installation of utilities 520 - January through May
- Continue concrete placement of walls for Solids Holding Tank 510 - through February
- Place slab on grade at GST 362 and begin wall panel casting - December through March
- Commence and continue Filter 282 filter cell wall placements - ongoing through July
- Complete TPS 292 slab on grade sections and begin wall construction - ongoing through May
- Steel and Precast erection at IPS - December through February

“The project has made very good progress even with the challenges of weather events such as Hurricane Laura and the Covid 19 pandemic. The challenges have given the team the unique opportunity to show what teamwork can do for a project. I am proud to be part of this great project.”

- Curtis McCullough  
PATC Auditor

### GOOD NEIGHBOR UPDATE

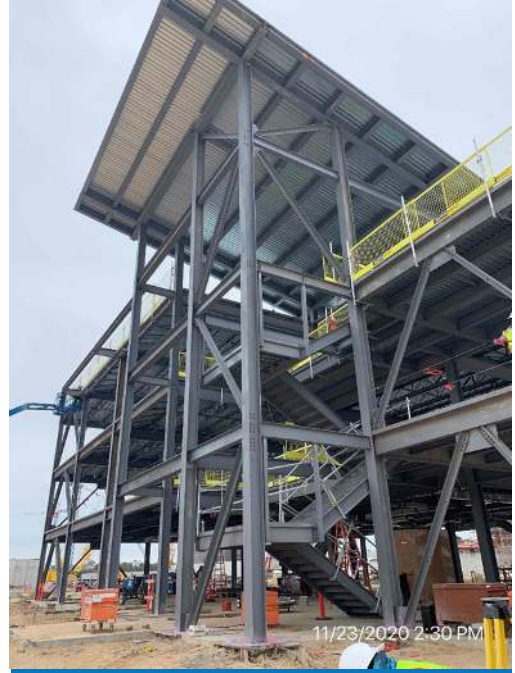
- **Next Meeting Date:** Q1 2021
- **Website:** <https://greaterhoustonwater.com/>



84" and 120" FW in Corridor 5



Structural Steel Members - IPS



Standing Seam Roof at AB



CENTRAL PLANT – 2nd Phase - Overall



311-Post Treatment Chemical Facility 1