



WATER PURIFICATION PLANT EXPANSION

Community Update

February 23, 2021



Central Harris County
Regional Water Authority



Safety Moment

Work on the Northeast Water Purification Plant expansion is considered essential so our team has continued to operate since the pandemic began:

We are no longer holding face to face meetings inside;

We are no longer offering tours of the facility;

We are not making any home visits;

We are wearing masks, washing our hands and spacing out staff;



Safety Moment

SOCIAL DISTANCING

Social distancing is the practice of reducing close contact between people to slow the spread of infections or diseases. Social distancing measures include limiting large groups of people coming together, closing buildings and canceling events.

AVOID

- Athletic Events
- Church Services
- Concerts
- Crowded Stores
- Group Gatherings
- Malls
- Non-essential Workers in Your House
- Playdates
- Theater Outings
- Traveling
- Sleepovers
- Workouts in Gyms
- Visitors in Your House

KEEP YOUR DISTANCE

Keep at least 6' - 8' between yourself and others

- Pick Up Medications
- Playing in a Park
- Visit a Grocery Store
- Visit a Local Restaurant to Get Take Out

SAFE TO DO

- Clean Out a Closet
- Cook a Meal
- Family Game Night
- Go for a Drive
- Go for a Hike
- Group Video Chats
- Listen to Music
- Stream a Favorite Show
- Take a Walk

We are socially distancing;

We are not coming to work sick or with symptoms of COVID;

We are committed to keeping our workers and our neighbors safe;

We are holding our public meeting by webinar, rather than in person, tonight.

We hope you all stay safe and healthy!



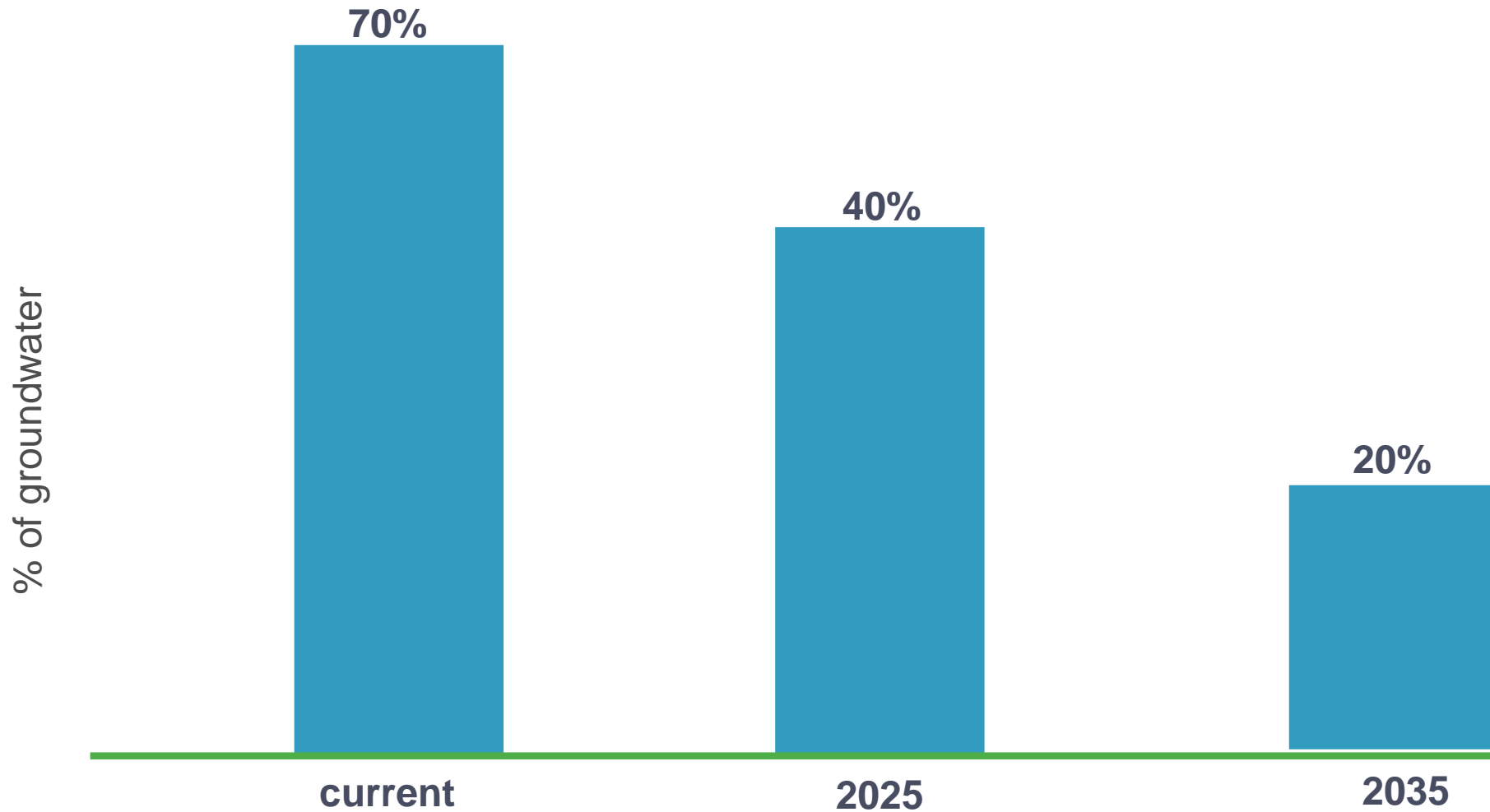
ALL IN COMPLIANCE WITH THE CENTER FOR DISEASE CONTROL (CDC) GUIDELINES

Contents

- 1 Project background
- 2 Progress to date
- 3 What's next
- 4 What we have heard
- 5 Questions

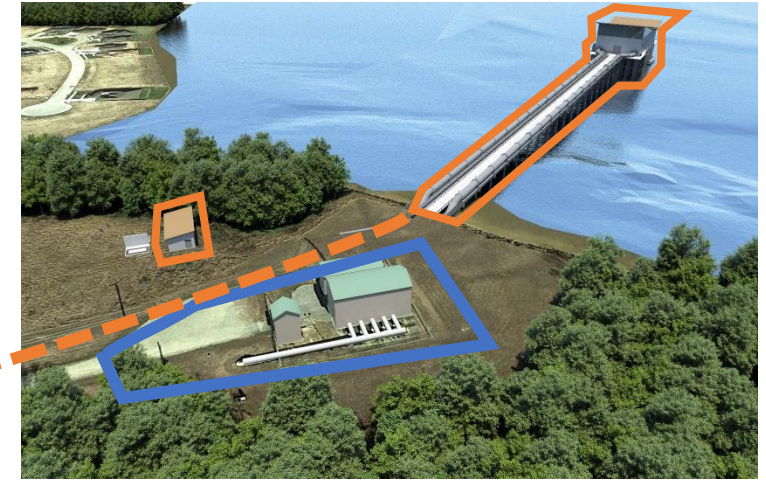
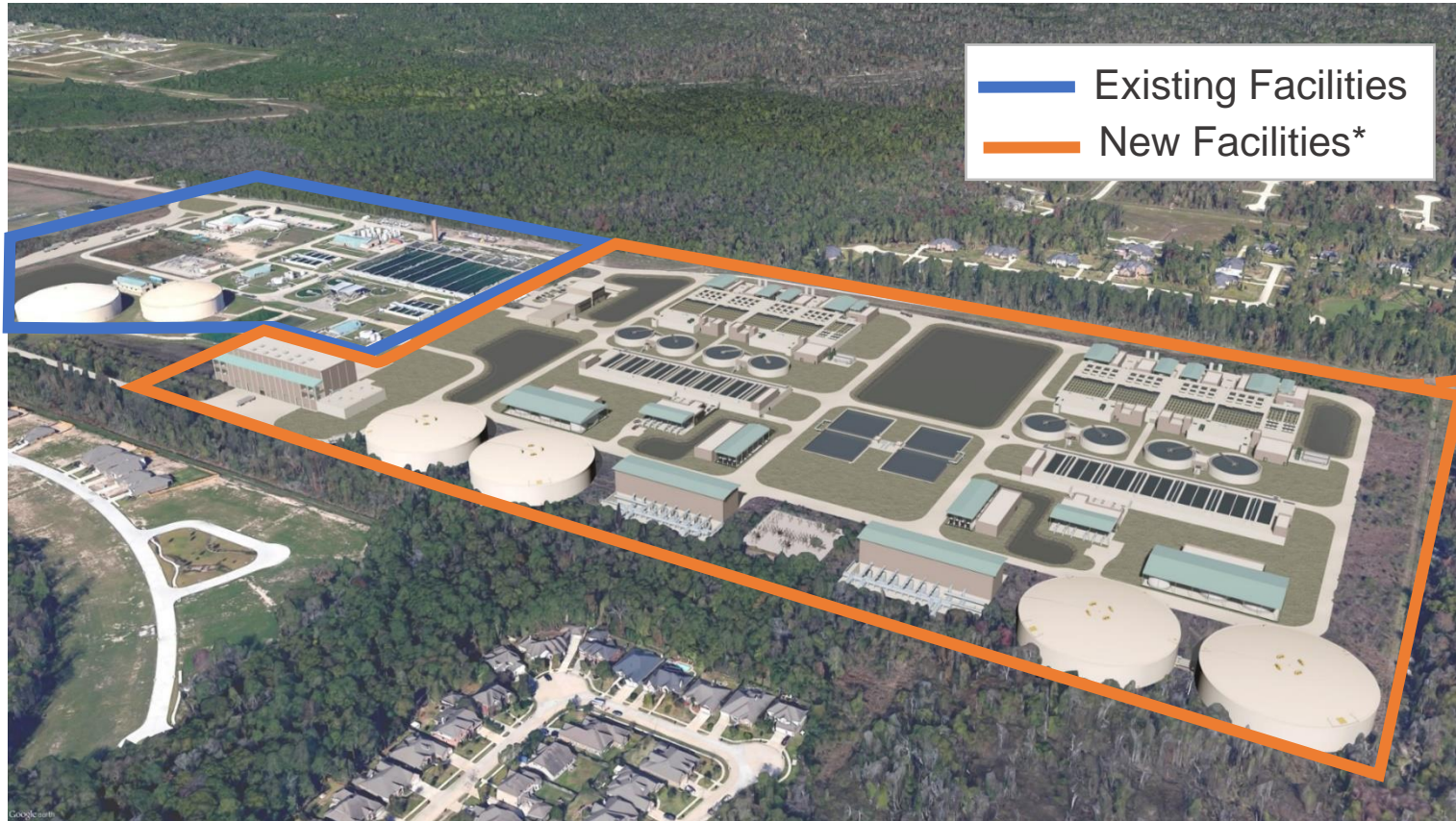
Project Background

MAXIMUM GROUNDWATER USE



this requirement pertains to the Area 3 of the Harris Galveston Subsidence District and Area A of the Fort Bend Subsidence District

Northeast Water Purification Plant



Intake Pump Station

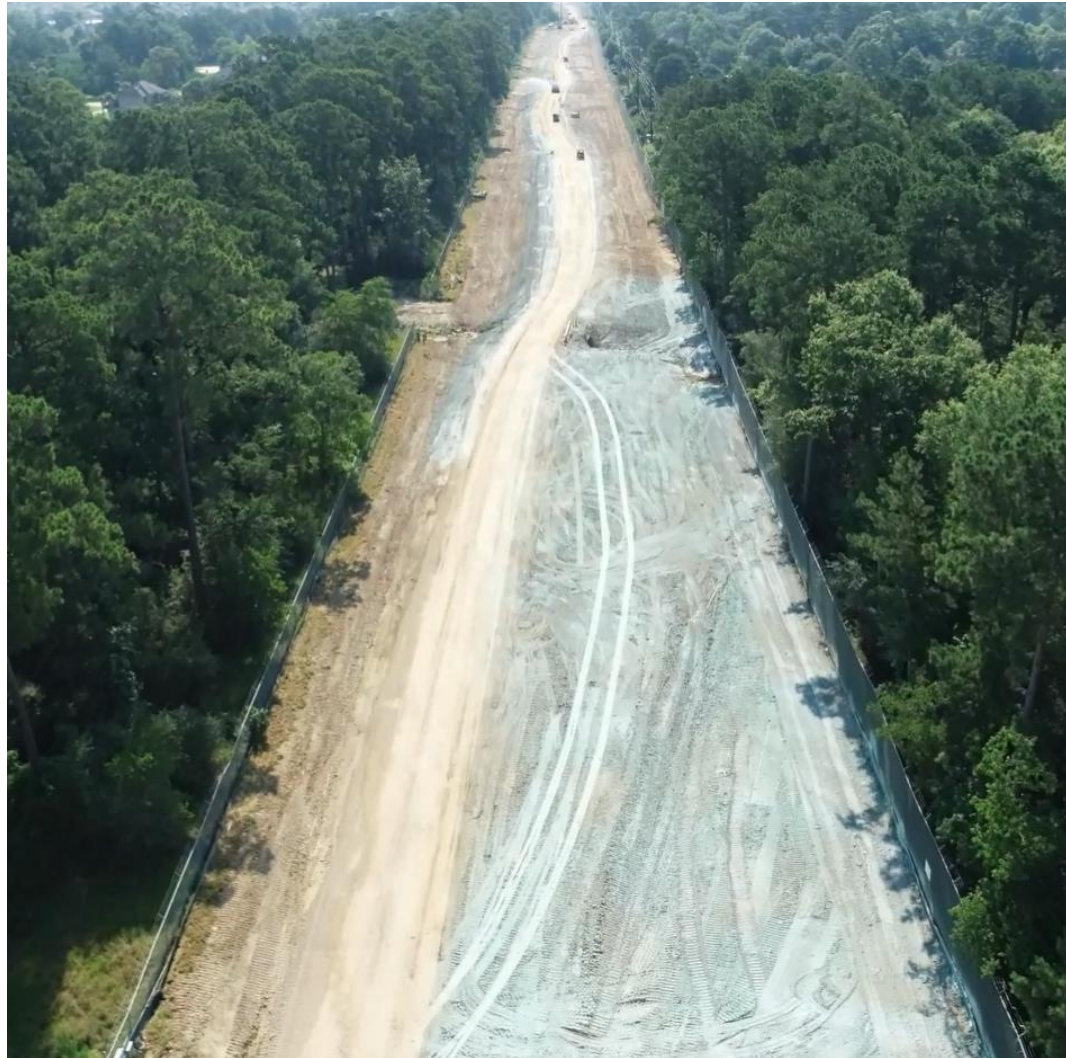
Raw Water Pipelines

Treatment Facilities

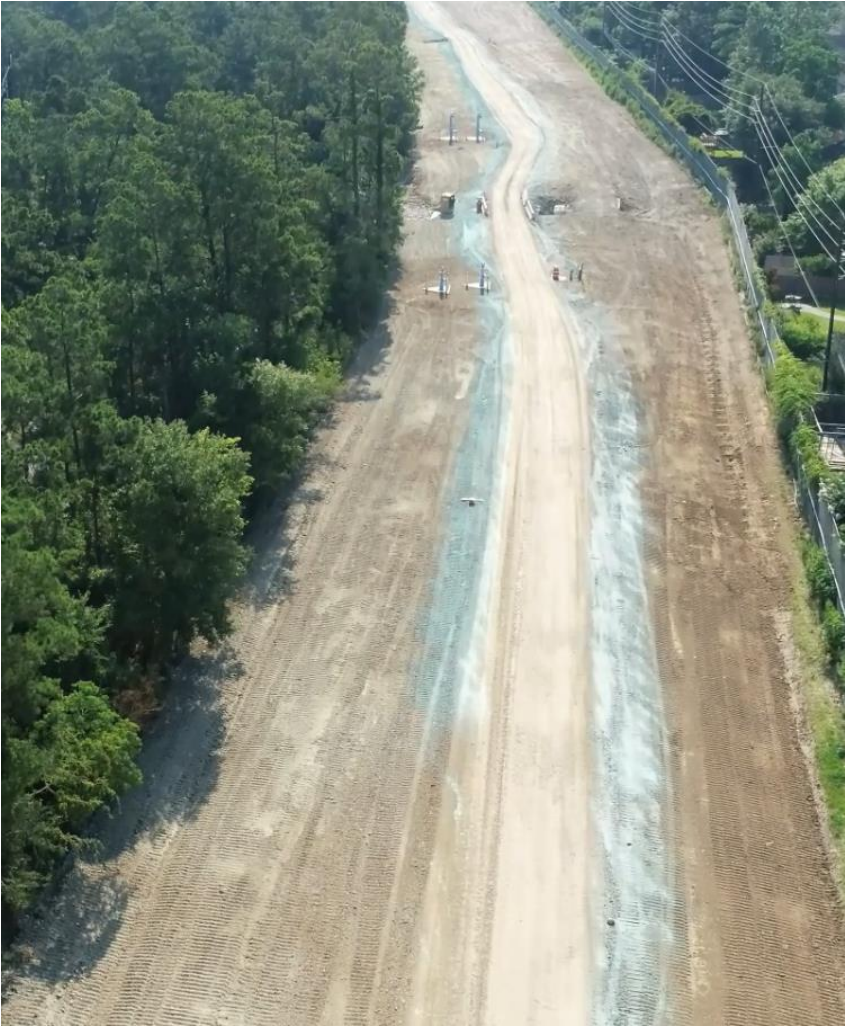
* new facilities shown are renderings of the completed project

Progress to Date

Pipe Installation in the West Corridor



Pipe Installation in the East Corridor



Pipeline in Tunnel under Lake Houston Parkway



Work on Intake Pump Station



Work on Intake Pump Station



Plant Site Construction



What's Next

Electrical Conduit and Utilities Installation in the Raw Water Corridor



Lake Houston Intake Pump Station



Construction at Plant



Next Steps

WHAT?	WHEN? *
Corridor Pipeline duct bank & utilities	Sept. 2020 – June 2021
Intake Pump Station at Lake Houston	Feb. 2019 – Dec. 2021
Beautification (trees, intake pump station)	2022
Installation of 2 nd Tunnel under W. Lake Houston Parkway	2023 – 2024
Corridor Pipeline Road Restoration	2024 – 2025
Plant Construction Site	2025

* Dates are approximate based on current situation and subject to change.

What We've Heard & What We've Done

What We've Heard & What We've Done

Construction noise at the plant:

Back-up beepers are being replaced with “growlers.” *Not all sub-contractors are using the growlers yet.* Generators have been encased in noise cancelling housing. The noise will be reduced once the Dewatering Building is completed.

Hours of operation at the plant:

Concrete pours at the plant have had to be scheduled before and sometimes after regular hours. The Project Team is working to identify further noise mitigation steps it can employ, during work activities that occur outside of regular hours.

Air cannons on the lake:

Established 24-hour rapid response team. Disabled the timers from the air cannon which corrected the issue.

What We've Heard & What We've Done

Question	Answer
Will trees be planted behind the plant?	Yes, and we will work with the neighborhood.
Will the Intake Pump Station on the lake create noise pollution?	The pump station has been designed to negate the noise.
Will the Intake Pump Station on the lake create light pollution?	Hooded lights directed downwards will be added for safety.
When will resident tours be scheduled again?	Once we reach herd immunity and more people are vaccinated and it is considered safe.
Will the fence be removed along the pipeline corridor?	The safety fence will be removed and trees will be planted. We will work with the neighborhood on safety precautions and determine the need for a fence.
What will noise levels be once the expanded plant is in operation?	Noise levels at the plant will be very similar to what they were before the expansion.
What's being done to ensure the facility is prepared to operate through a freeze?	Generators will power on when the electricity fails. Equipment is insulated against freezing temperatures.

Our Good Neighbor Practice

In response to your calls, we have adopted a Good Neighbor Practice which gets reviewed at our weekly meetings. That policy includes addressing your concerns. Our goal is to be good neighbors.

Some concerns from our previous Public Meetings have resulted in these responsive actions:

- No work before 7AM or after 7PM Monday through Saturday (*hours modified in certain areas due to weather, worker safety, concrete pouring and other related activities*)
- Be mindful of how closely we are working to people's homes
- Reduce backing up equipment as much as possible
- No foul language or loud music
- Address drainage concerns by clearing ditches and debris

Just in case.....

Damage Claims:

- If you believe you have damages greater than \$5,000 as a result of related construction activity, the City of Houston must refer your claim to the insurance carrier.
- The insurance carrier for the project will require proof that the damage was caused by the construction activity which could include requesting before and after photos.
- You may need to hire a Professional Engineer to supply a signed and sealed affidavit certifying the cause of your damage in order for your claim to be submitted for payment. It is likely the insurance carrier will involve their legal team for large claims.

What questions do you have?

Questions & Answers

You may now ask questions two ways:



- 1) Submit it in writing in the Q&A and we will read them in the order we receive them
- 2) You may select Raise Hand and we will call on you in order. You will have two minutes to ask your question, so please be succinct

The Chat function will not be utilized during this webinar. If we don't have time to get to your question, please submit it in Q&A and we will respond to you by email.

Contact us

GreaterHoustonWater.com
281-520-3777

newppexpansion@gmail.com

Please contact us at this email and phone number for faster response

Public meetings will be scheduled regularly.
Our next Webinar will be held this summer.