



WATER PURIFICATION PLANT EXPANSION

Community Update

March 22, 2022



Central Harris County
Regional Water Authority



Safety Moment

Work on the Northeast Water Purification Plant expansion is considered essential so our team has continued to operate since the pandemic began:

We will soon begin offering tours in groups of four (with COVID protocols in place);

We are not making any home visits;

We are wearing masks, washing our hands and spacing out staff;

And, remarkably, our team has worked over **6.2 million construction manhours without any accident** that would cause someone to not be able to return back to work immediately.



Safety Moment

SOCIAL DISTANCING

Social distancing is the practice of reducing close contact between people to slow the spread of infections or diseases. Social distancing measures include limiting large groups of people coming together, closing buildings and canceling events.

AVOID

- Athletic Events
- Church Services
- Concerts
- Crowded Stores
- Group Gatherings
- Malls
- Non-essential Workers in Your House
- Playdates
- Theater Outings
- Traveling
- Sleepovers
- Workouts in Gyms
- Visitors in Your House

KEEP YOUR DISTANCE

Keep at least 6' - 8' between yourself and others

- Pick Up Medications
- Playing in a Park
- Visit a Grocery Store
- Visit a Local Restaurant to Get Take Out

SAFE TO DO

- Clean Out a Closet
- Cook a Meal
- Family Game Night
- Go for a Drive
- Go for a Hike
- Group Video Chats
- Listen to Music
- Stream a Favorite Show
- Take a Walk

We are committed to keeping our workers and our neighbors safe during the pandemic.

We have been holding our public meetings by webinar, rather than in person, since 2020.

PLEASE RESPOND TO THE SURVEY QUESTION TONIGHT ABOUT YOUR PREFERENCE OF FUTURE MEETINGS BEING IN PERSON OR HELD VIRTUALLY.



WE REMAIN IN COMPLIANCE WITH THE CENTER FOR DISEASE CONTROL (CDC) GUIDELINES

Contents

1 Project background

2 Progress to date

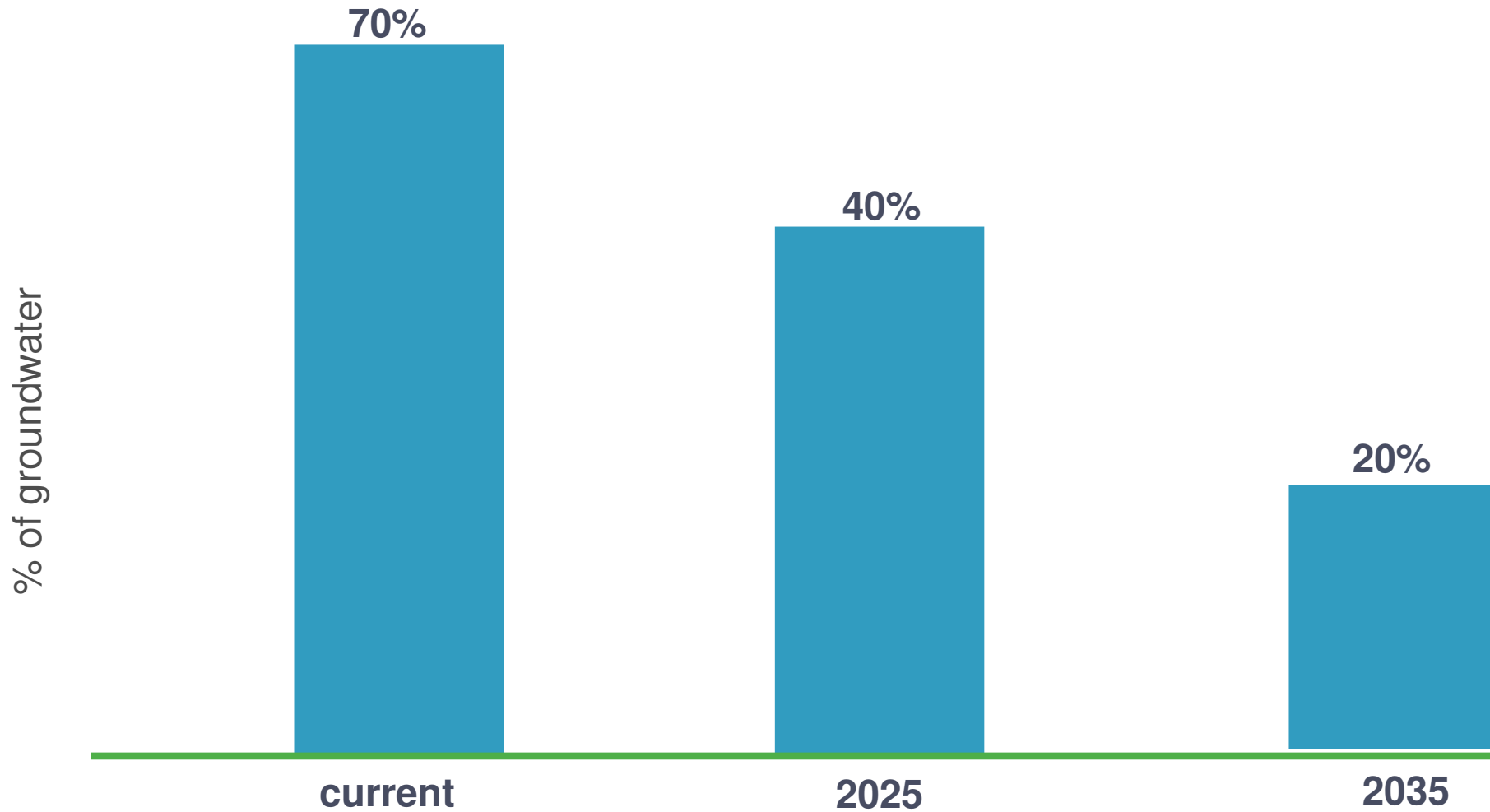
3 What's next

4 What we have heard

5 Questions

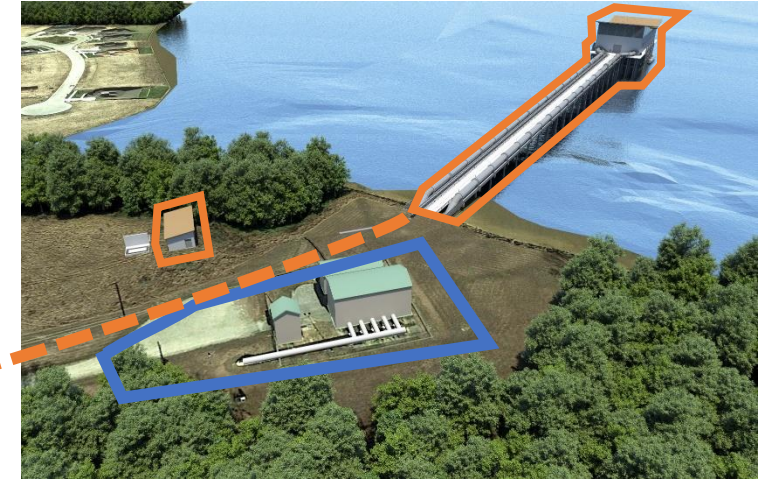
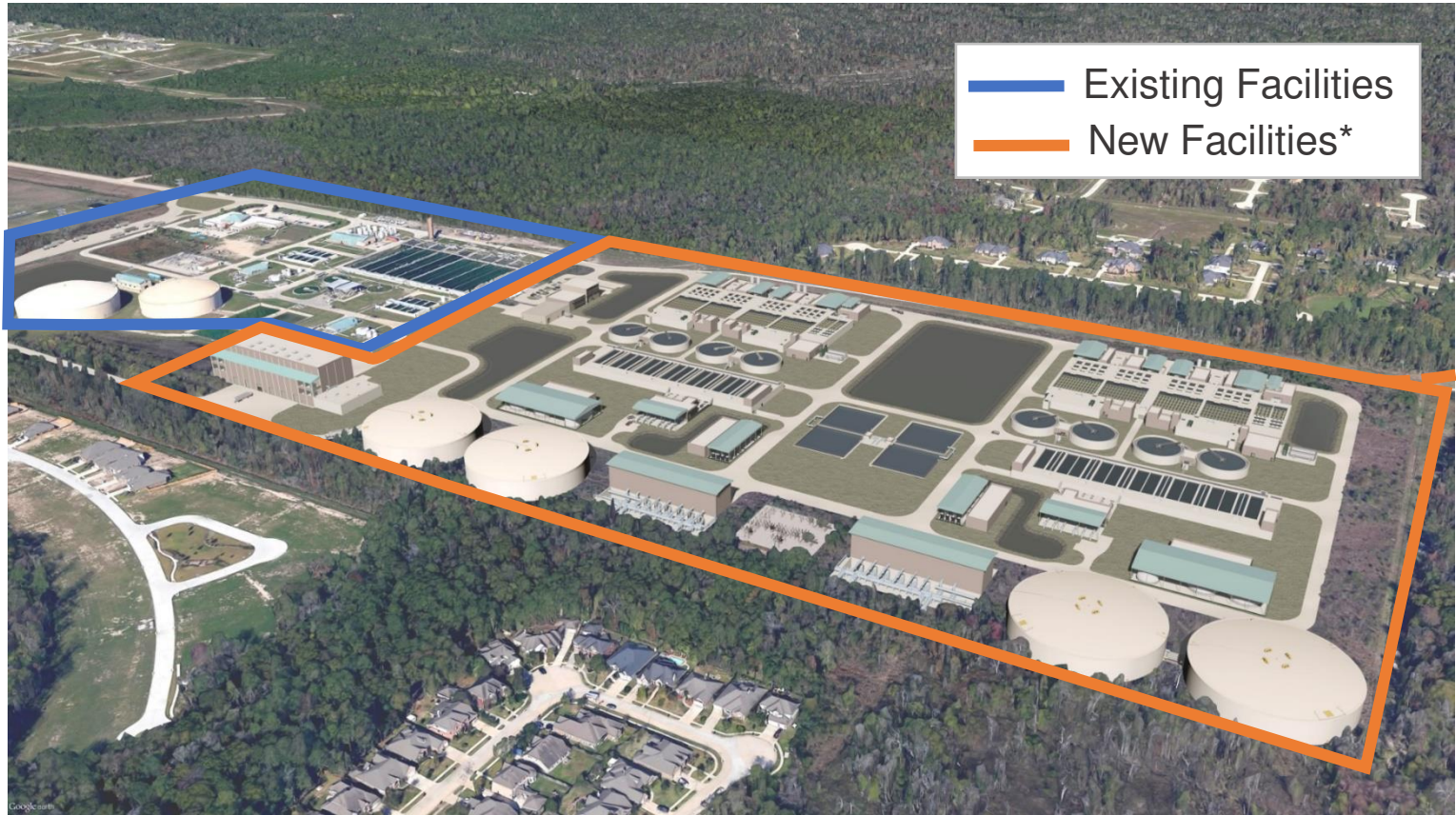
Project Background

MAXIMUM GROUNDWATER USE



this requirement pertains to the Area 3 of the Harris Galveston Subsidence District and Area A of the Fort Bend Subsidence District

Northeast Water Purification Plant



Intake Pump Station

Raw Water Pipelines

Treatment Facilities

* new facilities shown are renderings of the completed project

Progress to Date

Lake Houston Intake Pump Station



Lake Houston Intake Pump Station



Raw Water Pipeline Corridor



Plant Site Construction



What's Next

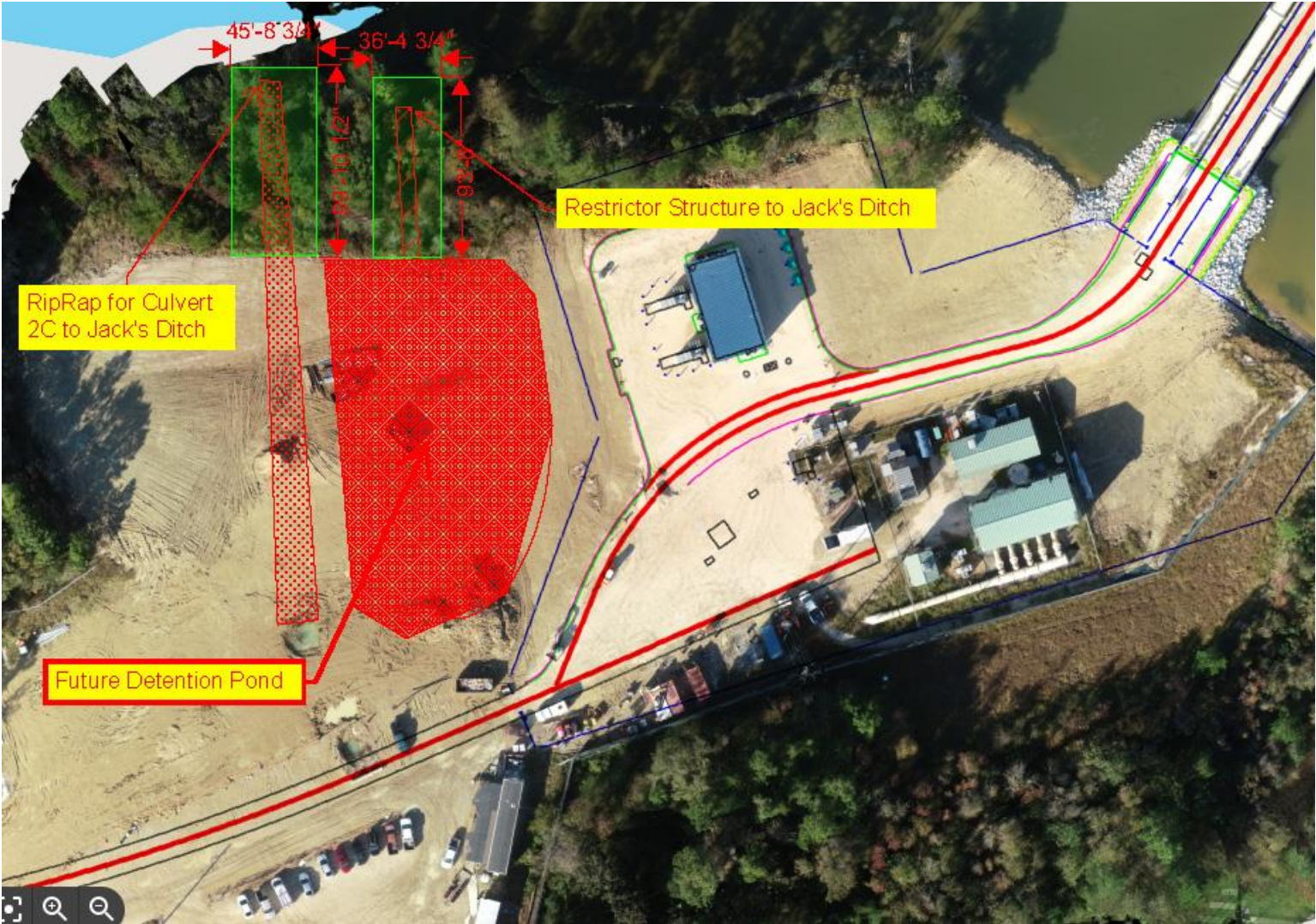
Lake Houston Intake Pump Station

Testing of the Intake Pumps and ancillary systems will Begin

Construction of a storm detention pond will begin



Construction of a storm detention pond



Raw Water Pipeline Corridor

- **Complete chemical piping installation and testing**
- **Complete storm drain culvert installation**
- **Second tunnel under W. Lake Houston Parkway to be constructed**
- **Partial site restoration will begin**



Plant Site Construction

Testing filters and installation of filter media

Painting of the ground storage tanks following successful leak testing

Finish out Administration and Maintenance Buildings and complete the stormwater pond.

Begin construction of additional facilities in the east half of the site



Next Steps

WHAT?	WHEN? *
Intake Pump Station at Lake Houston	Testing thru Mid-2022
Beautification-Hydroseeding in Phase 1 area and intake pump station	2022 – 2023
Installation of 2 nd Tunnel under W. Lake Houston Parkway	Late 2022 – Early 2024
Corridor pipeline road restoration	2024 – 2025
Plant construction site	2025
Construction fence removal in the corridor	2025

* Dates are approximate based on current situation and subject to change.

What We've Heard & What We've Done

What We've Heard & What We've Done

How long will we be dealing with constant vibration and noise behind our homes on Arden Glen Drive:

Construction of the emergency generators gas line where noticeable vibration was experienced, is now complete. Construction along the south portion of the site will continue through 2025. We continue to monitor and work to mitigate excessive vibration and noise.

Why is there still digging and construction work being done along the raw water corridor behind Cambridge Eagle Drive – isn't the pipeline finished:

Construction of storm drain system along the corridor and some re-excavation in various locations to address leaks. We are working to complete this work with as little disruption as practical to the residents.

What can we do to cut down on the Construction noise at the plant:

We are continuing to pay attention to minimizing the noise to the degree we can with sound barriers and reduced back-up alarms.

What We've Heard & What We've Done

Question/Issue	Answer/Response
Will the intake pump station make noise?	The pumps are located inside the building to minimize noise. Sound modeling showed that noise away from the station will be at background levels.
Will trees be planted along the corridor and behind the plant?	Yes. The plan is to begin reforestation planting this year. The residents will be asked for input but the type of trees will be limited due to type of soil. An arborist will be consulted.
When will the tall protective fence around the project be removed?	The fence is in place for safety reasons and will be removed in 2025 when the project expansion is complete and the construction is over.
Will the boundary between the homes and the corridor just be trees or will there still be a fence behind the resident fences?	There will not be an additional fence installed along the existing residential fences after the temporary construction fencing is removed in 2025.
Will Summerwood and neighboring areas eventually get their water from this plant?	Summerwood area (MUD's 342, 344 and 361) currently gets water from NEWPP and will continue to do so. See the following map.



Our Good Neighbor Practice

In response to your calls, we have adopted a Good Neighbor Practice which gets reviewed at our weekly meetings. That policy includes addressing your concerns. Our goal is to be good neighbors.

Just in case.....

Damage Claims:

- If you believe you have damages greater than \$5,000 as a result of related construction activity, the City of Houston must refer your claim to the insurance carrier.
- The insurance carrier for the project will require proof that the damage was caused by the construction activity which could include requesting before and after photos.
- You may need to hire a Professional Engineer to supply a signed and sealed affidavit certifying the cause of your damage in order for your claim to be submitted for payment. It is likely the insurance carrier will involve their legal team for large claims.

What questions do you have?

Questions & Answers

You may now ask questions two ways:



- 1) Submit it in writing in the Q&A and we will read them in the order we receive them
- 2) You may select Raise Hand and we will call on you in order. You will have two minutes to ask your question, so please be succinct

The Chat function will not be utilized during this webinar. If we don't have time to get to your question, please submit it in Q&A and we will respond to you by email.

Contact us

GreaterHoustonWater.com
281-520-3777

newppexpansion@gmail.com

Please contact us at this email and phone number for faster response

Public meetings will be scheduled regularly.
Our next meeting will be held this summer.