



WATER PURIFICATION PLANT EXPANSION

Community Update

May 23, 2023



Central Harris County
Regional Water Authority



Safety Moment

Work on the Northeast Water Purification Plant expansion is considered essential so our team continued to operate during the pandemic.

We continue to take all required safety precautions.

And, remarkably, our team has worked over **8 million construction manhours without any accident** that would cause someone to not be able to return back to work immediately.



Safety Moment

SOCIAL DISTANCING

Social distancing is the practice of reducing close contact between people to slow the spread of infections or diseases. Social distancing measures include limiting large groups of people coming together, closing buildings and canceling events.

AVOID

- Athletic Events
- Church Services
- Concerts
- Crowded Stores
- Group Gatherings
- Malls
- Non-essential Workers in Your House
- Playdates
- Theater Outings
- Traveling
- Sleepovers
- Workouts in Gyms
- Visitors in Your House

KEEP YOUR DISTANCE

Keep at least 6' - 8' between yourself and others

- Pick Up Medications
- Playing in a Park
- Visit a Grocery Store
- Visit a Local Restaurant to Get Take Out

SAFE TO DO

- Clean Out a Closet
- Cook a Meal
- Family Game Night
- Go for a Drive
- Go for a Hike
- Group Video Chats
- Listen to Music
- Stream a Favorite Show
- Take a Walk

We are committed to keeping our workers and our neighbors safe.

We have been holding our public meetings by webinar, rather than in person since 2020, and per your requests we are continuing to do so.

PLEASE RESPOND TO THE SURVEY QUESTION TONIGHT ABOUT YOUR PREFERENCE OF FUTURE MEETINGS BEING IN PERSON OR HELD VIRTUALLY.



WE REMAIN IN COMPLIANCE WITH THE CENTER FOR DISEASE CONTROL (CDC) GUIDELINES

Contents

1 Project background

2 Progress to date

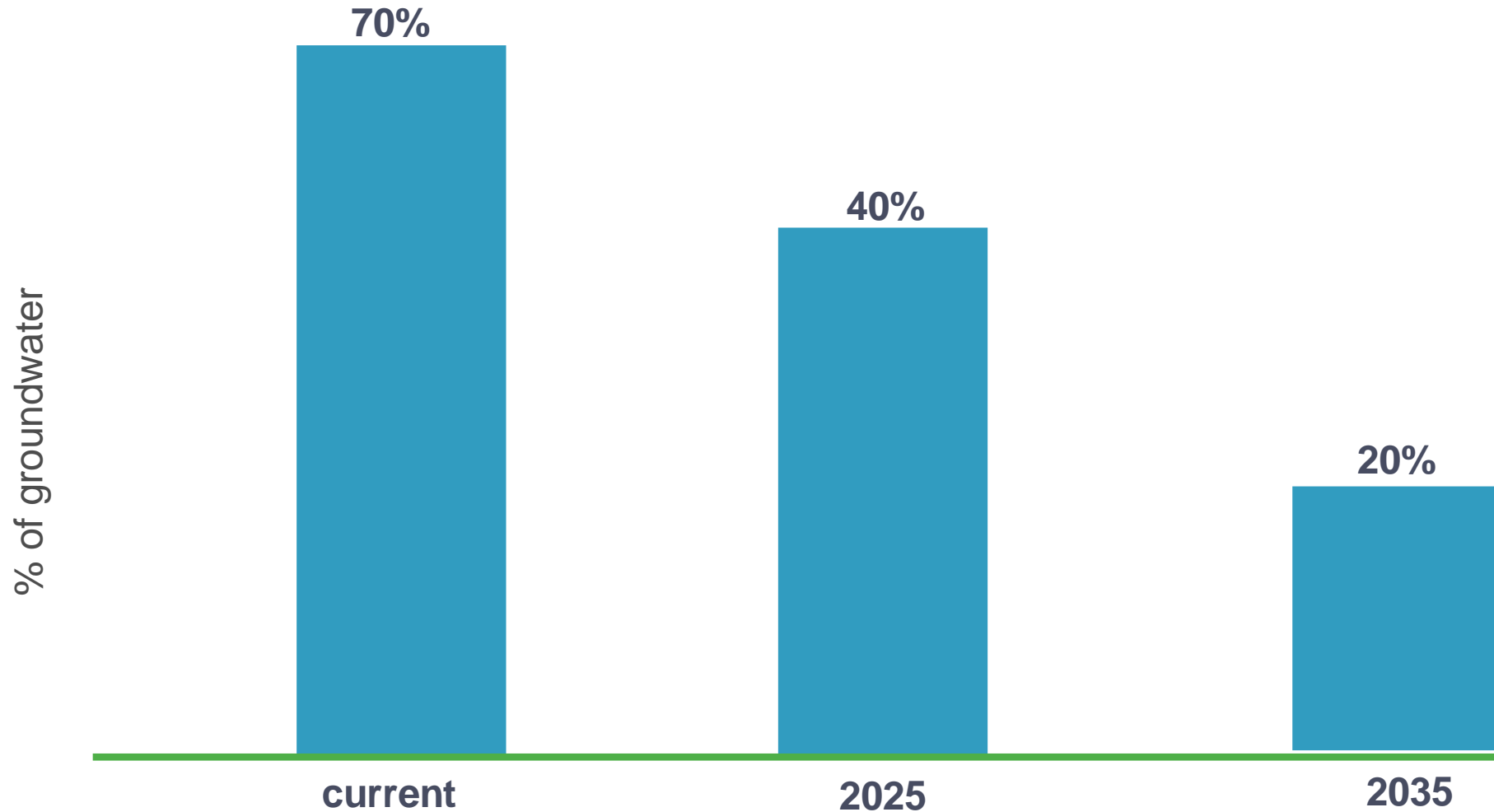
3 What's next

4 What we have heard

5 Questions

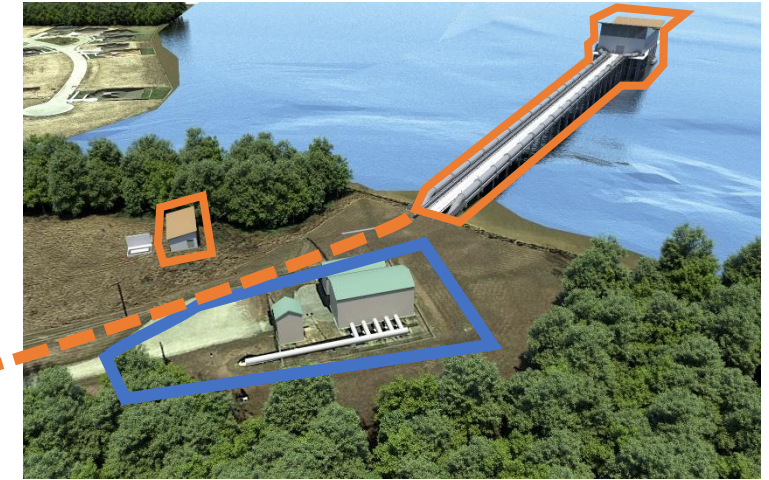
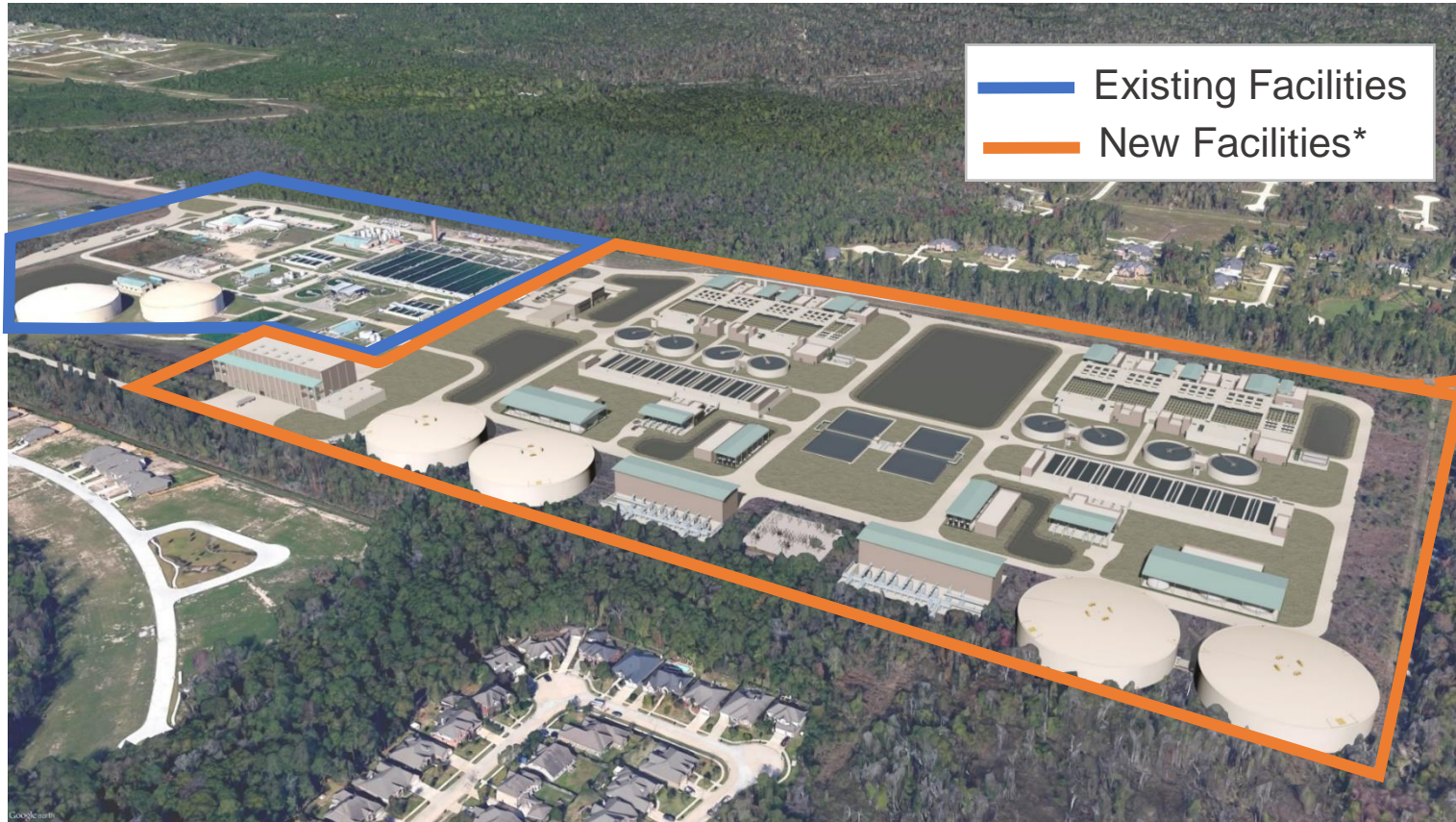
Project Background

MAXIMUM GROUNDWATER USE



this requirement pertains to the Area 3 of the Harris Galveston Subsidence District and Area A of the Fort Bend Subsidence District

Northeast Water Purification Plant



Intake Pump Station

Raw Water Pipelines

Treatment Facilities

* new facilities shown are renderings of the completed project

Progress to Date

Lake Houston Intake Pump Station



Construction on the Intake Pump Station is complete.

Site fencing has been installed.

Testing of pumps and pump station systems is in progress.

Drying of chemical pipelines (equipment near the shore) will begin in May/June and is anticipated to run for several weeks.

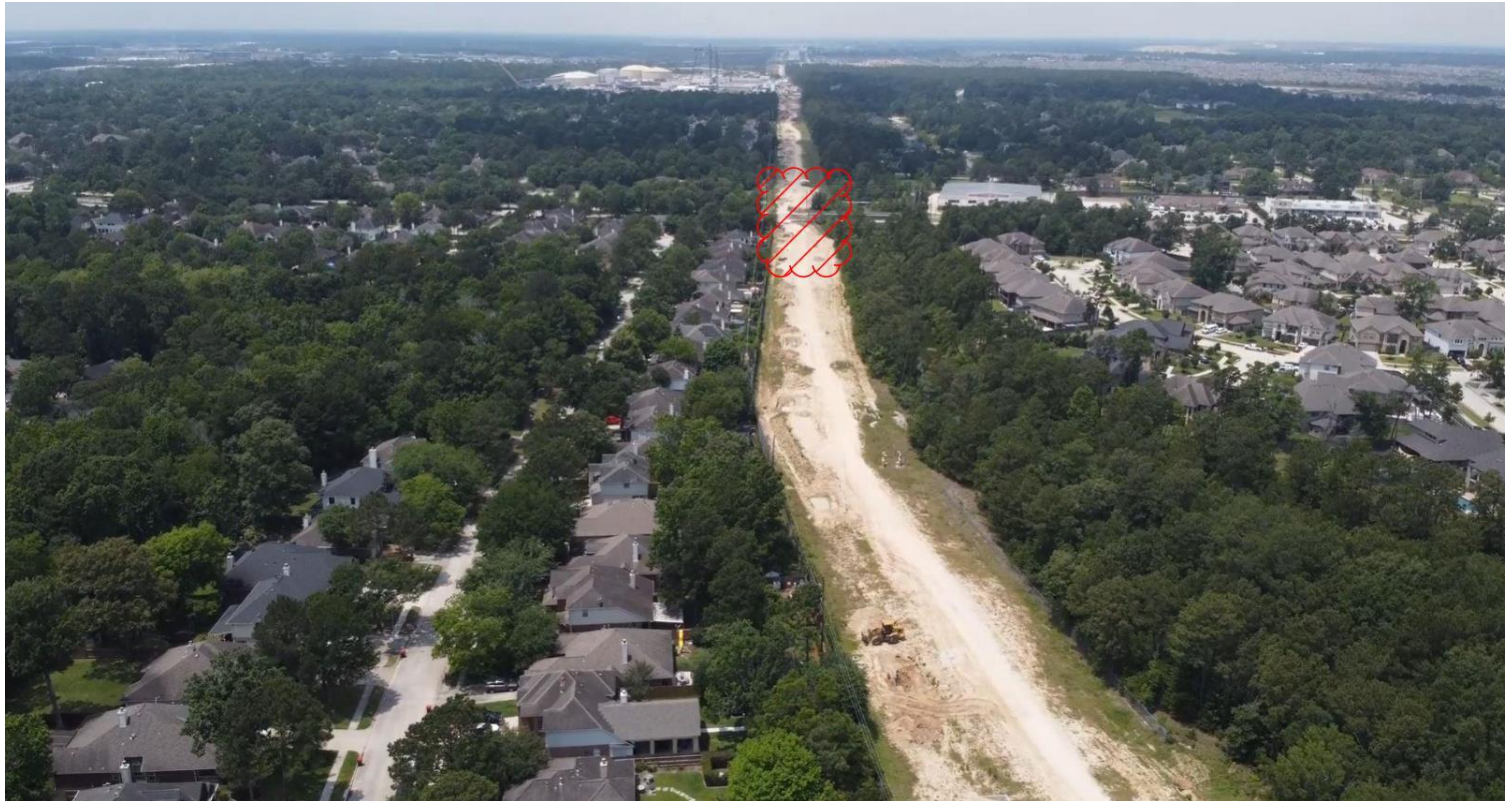
Raw Water Pipeline Corridor



Testing of chemical pipelines is progressing along the entire corridor.

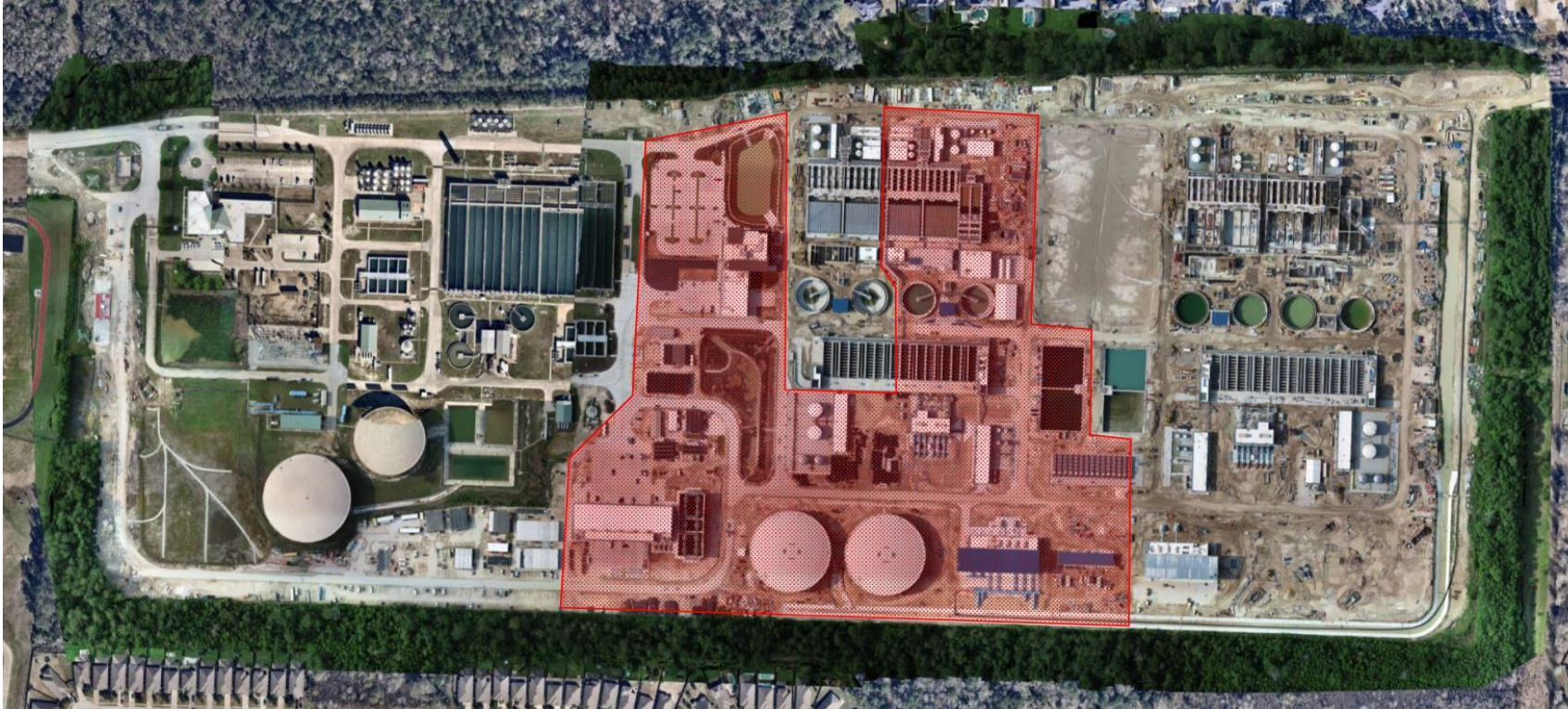
Minimal earthwork is occurring except for upcoming backfill of excavations related to test and repair of the pipeline.

Raw Water Pipeline Corridor



Completed installation of 108" raw water pipe sections in preparation for the North Tunnel project at W. Lake Houston Parkway

Plant Site Construction



Construction of Phase 1 facilities nearing completion with the first 80MGD capacity ready soon.

Construction of Phase 2 facilities ongoing with the remaining 320 MGD total capacity progressing.

Plant Site Construction



Completed slab and wall construction at High Service Pump Station East



Completed vibratory work in the same area – the Southeast corner of the plant

Administration Building



Early rendering of what the Administration Building would look like



Administration Building nearly complete and move-in ready

What's Next

Lake Houston Intake Pump Station

Continue testing and begin treatment process start-up with the introduction of raw water from Lake Houston



Raw Water Pipeline Corridor

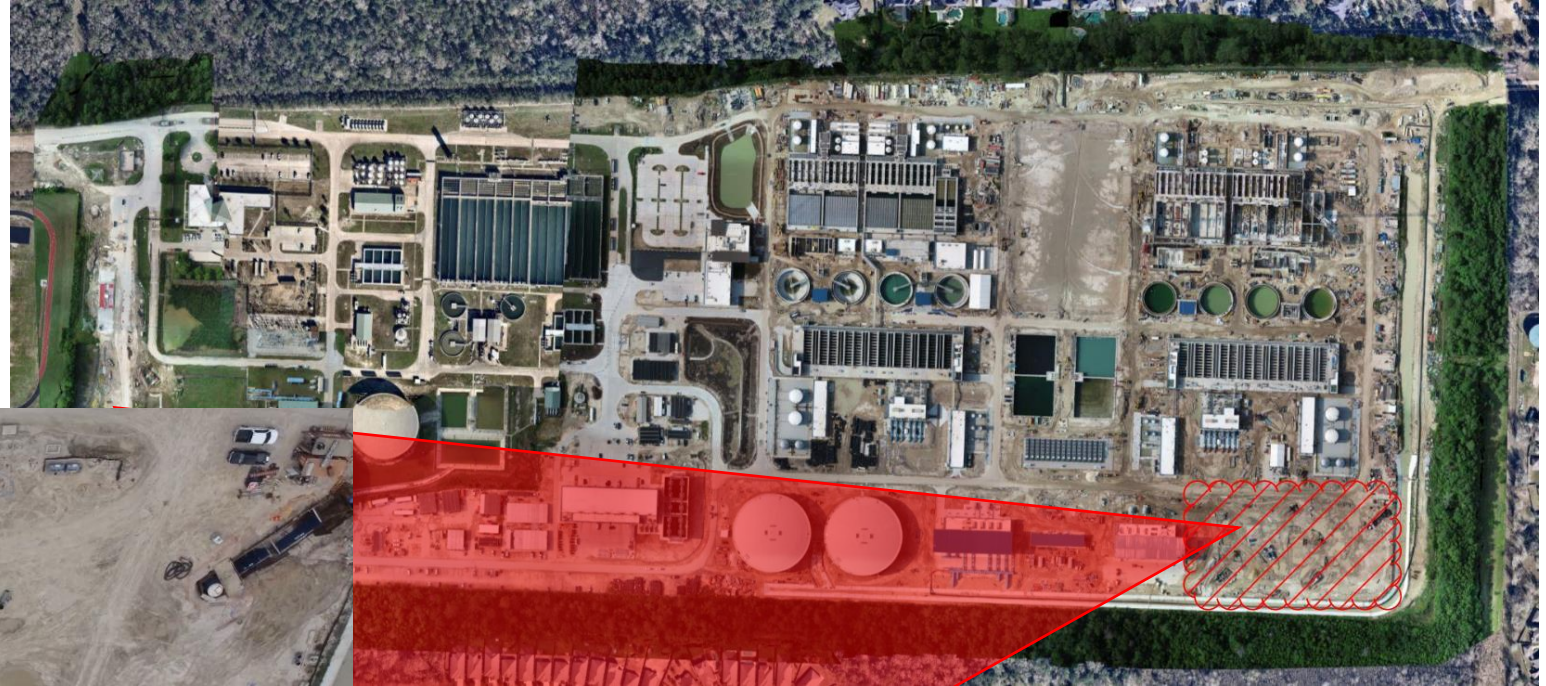
Construction will begin on the North tunnel under W. Lake Houston Parkway once the plant is online with the new pipeline



Plant Site Construction

East Ground Storage Tanks:

Placement of two ground storage tank slabs and walls (*will require night time concrete placement*)



Plant Site Construction

Complete construction of Phase 1 facilities and operational testing

Continue construction of Phase 2 facilities



Next Steps

WHAT?	WHEN? *
Intake Pump Station at Lake Houston	Complete
Hydroseeding in Phase 1 area and intake pump station	2023
Installation of 2 nd Tunnel under W. Lake Houston Parkway	Early 2024
Corridor pipeline road restoration	2024 – 2025
Plant construction site	2025
Construction fence removal in the corridor	2025

* Dates are approximate based on current situation and subject to change.

What We've Heard & What We've Done

What We've Heard & What We've Done

What are you doing to address the dust and dirt blowing into the back yards of the homes on Leather Saddle Court:

The Contractor is continuing to monitor and perform dust control throughout the site.

What can be done to get damage payments so we can make repairs to our property on Leather Saddle Court:

We must get agreement from the contractor who is causing the damage, an amount must be agreed upon, a damage release must be signed by the property owner. Then, the contractor will write a check. But, until the contractor agrees there is not much the city can do.

Is there an ongoing plan to keep the weeds cut around the corridor fence and the West Lake Houston Parkway intersection:

The Contractor is supposed to routinely monitor site conditions and address issues as needed. This includes weed control, dust mitigation, site drainage, street sweeping (site and public roadways), etc. Notify us if that is not happening and we will see that it does.

What We've Heard & What We've Done

Question/Issue	Answer/Response
There is a loud noise running 24/7 coming from an area by the Intake Pump Station	The chemical line constructed in the corridor must be completely dry before it can be completed. The noise is a temporary, high powered dryer that is removing moisture from the line. As soon as the line is complete, tested and dried, this process will stop and the noise will cease.
When will the tall protective fence around the project be removed?	The fence is in place for safety reasons and will be removed in 2025 when the project expansion is complete and the construction is over.
The green dust cover on the protective fence is falling down and tearing.	Crews went out and replaced the dust cover in areas where it was missing and re-hung it in areas where it had fallen.
Weeds have grown up around W. Lake Houston Parkway and Summerwood entrance	Thanks to the Summerwood HOA notifying us we were able to cut the weeds and clean up the area within days.
Why does concrete need to be placed at night causing bright lights to shine in our homes and noise at night?	Large concrete placements require many trucks in a continuous supply and longer durations that extend well outside of regular work hours. Traffic and temperature are also factors that drive the need for early concrete placements.

Our Good Neighbor Practice

In response to your calls, we have adopted a Good Neighbor Practice which gets reviewed at our weekly meetings. That policy includes addressing your concerns. Our goal is to be good neighbors.

Just in case.....

Damage Claims:

- If you believe you have damages greater than \$5,000 as a result of related construction activity, the City of Houston must refer your claim to the insurance carrier.
- The insurance carrier for the project will require proof that the damage was caused by the construction activity which could include requesting before and after photos.
- You may need to hire a Professional Engineer to supply a signed and sealed affidavit certifying the cause of your damage in order for your claim to be submitted for payment. It is likely the insurance carrier will involve their legal team for large claims.

What questions do you have?

Questions & Answers

You may now ask questions two ways:



- 1) Submit it in writing in the Q&A and we will read them in the order we receive them
- 2) You may select Raise Hand and we will call on you in order. You will have two minutes to ask your question, so please be succinct

The Chat function will not be utilized during this webinar. If we don't have time to get to your question, please submit it in Q&A and we will respond to you by email.

Contact us

GreaterHoustonWater.com
281-520-3777

newppexpansion@gmail.com

Please contact us at this email and phone number for faster response

Public meetings will be scheduled regularly.
Our next meeting will be held in the fall.